



Morshead Mansions

Morshead Road, W9

£4,250 per month
(£980.77 per week)

A newly refurbished three bedroom split level apartment set over the fourth and fifth floors of a charming red brick mansion block. Located opposite the open green spaces of Paddington Rec and within close proximity to Maida Vale and Warwick Avenue.



Morshead Mansions

Morshead Road, W9

- Newly Refurbished Split Level Three Bedroom Apartment
- Large Open Plan Kitchen & Reception Room
- Three Double Bedrooms
- Three Modern Bathrooms
- Views Over Paddington Recreational Ground

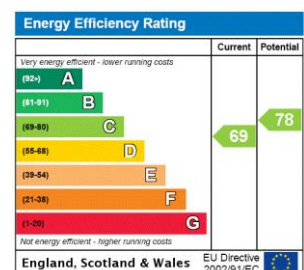


A newly refurbished three bedroom split level apartment set over the fourth and fifth floors of a charming red brick mansion block.

The property has been finished to a very high standard throughout and comprises a large and bright open plan kitchen and reception room with views over Paddington Recreational Ground, three double bedrooms, three bathrooms (two en-suite) and a utility room.

Located opposite the open green spaces of Paddington Rec and within close proximity to the many amenities and transport links of Maida Vale, whilst Warwick Avenue station is also close by.

Minimum Term: 12 months
Deposit Required: 6 weeks
Local Authority: City Of Westminster
Council Tax Band: E
EPC Rating: C
Part Furnished, Unfurnished

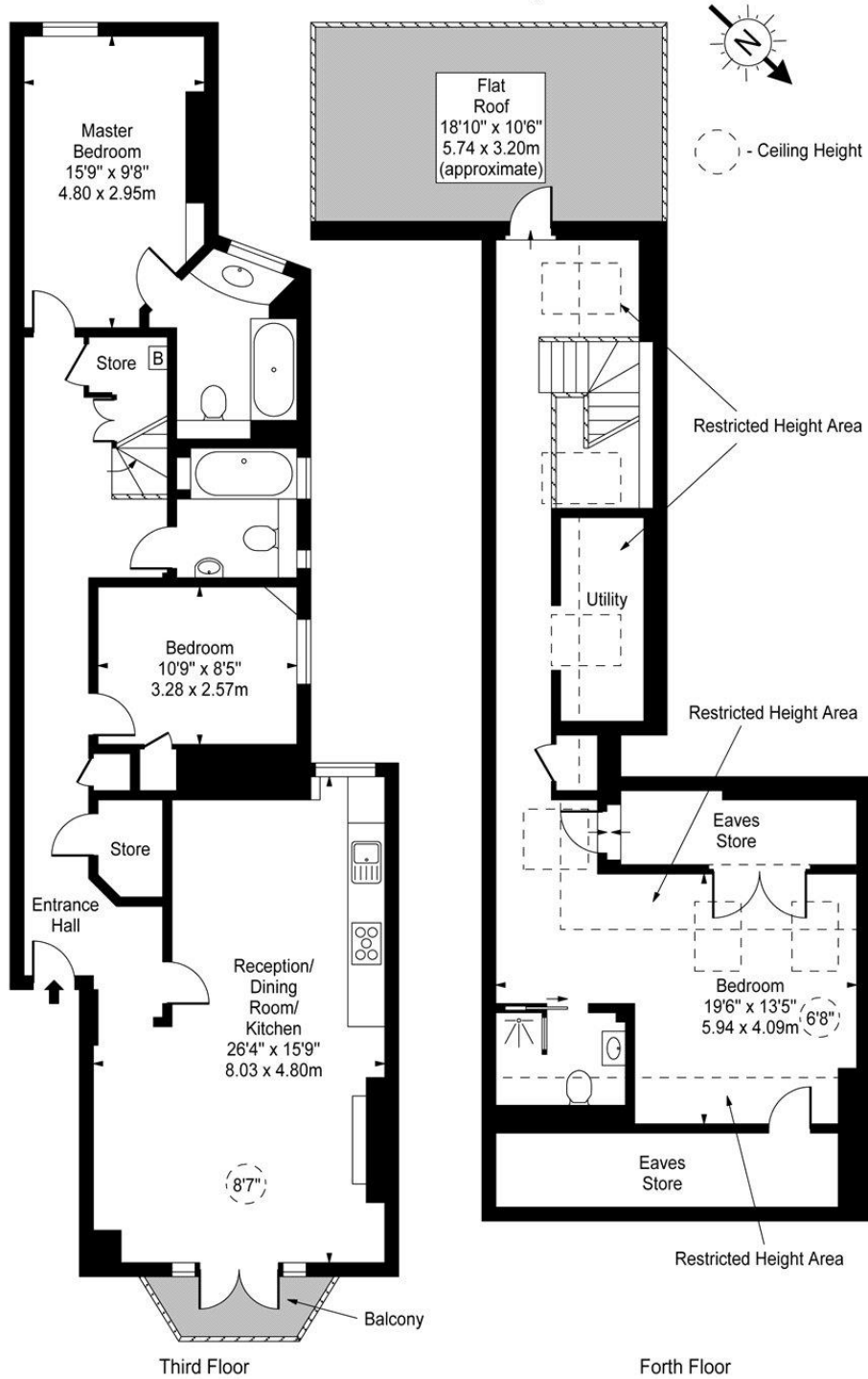


Chestertons Little Venice Lettings

26 Clifton Road
Maida Vale
London
W9 1SX
littlevenice@chestertons.co.uk
02072662369
chestertons.co.uk

Additional tenant charges apply (fees apply to non-AST tenancies only)
Tenancy Agreement Fee: £300
References per Tenant/Guarantor: £60
Inventory check (approx. £100 – £250 inc. VAT)
chestertons.co.uk/property-to-rent/applicable-fees

Morshead Mansions, W9



Approx Gross Internal Area 1332 Sq Ft - 123.74 Sq M

Approx. Floor Area Including Restricted Heights 1637 Sq Ft - 152.08 Sq M

For Illustration Purposes Only - Not To Scale

www.goldlens.co.uk

Ref. No. 011020M

