



## Casa Apartments, East India Dock Road, London, E14 6DQ

**£623 Per Week**

A fantastic 3 double bedroom 2 bathroom split level 'PENTHOUSE APARTMENT' situated a short walk away into Canary wharf!

The property comprises of an open plan living area with access to balcony, modern fitted kitchen, stairs leading up to galleried lounge / study area with access to terrace, 3 double bedrooms and 2 modern bathroom suites.

Short walk to Westferry DLR station.

Comes furnished. PROPERTY AVAILABLE FROM 03.08.2026

Marketing of On-Site Amenities and Agent Indemnity.

The Agent is authorised to market the building's on-site amenities by their client (the landlord), including but not limited to the concierge services and gym facilities (collectively, the "Amenities"), based strictly on descriptions and specifications provided by the Client & or the developer. The Agent acts solely as a marketing representative and exercises no operational control, management, or oversight over the Amenities and as such the amenities are subject to change or withdrawal by the freeholder/developer or their representatives.

- 3 Double Bedroom Penthouse
- Split Level Apartment
- Available From 03.08.2026
- 2 Balconies
- Walk Into Canary Wharf
- High Specification Kitchen
- Comes Furnished
- Modern Kitchen / Diner
- Galleried Reception Room
- Very Short Walk to Westferry DLR

# Casa Apartments, East India Dock Road, London, E14 6DQ



BEDROOM



CASA APARTMENTS



BEDROOM



BEDROOM



CASA APARTMENTS

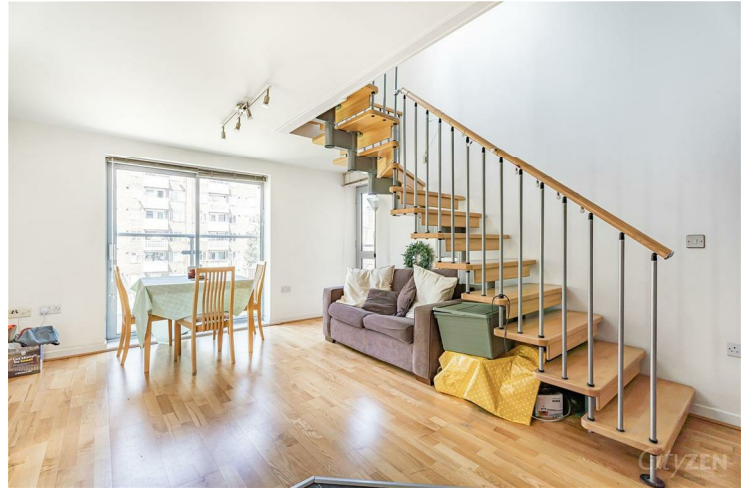


BEDROOM

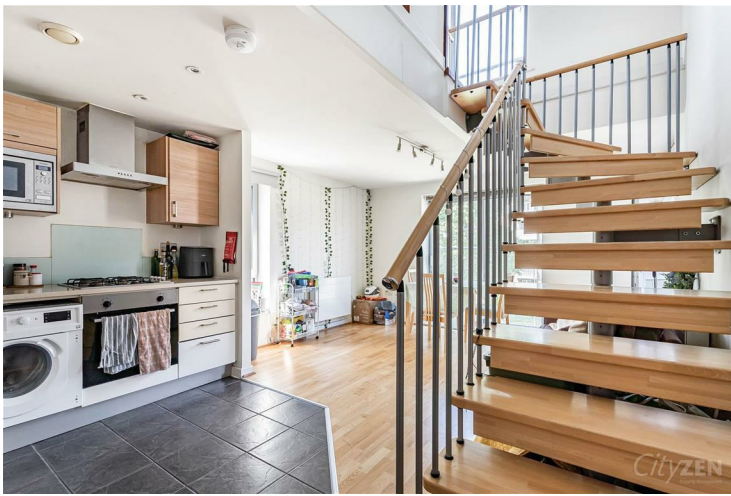
# Casa Apartments, East India Dock Road, London, E14 6DQ



BATHROOM



RECEPTION



RECEPTION



KITCHEN



RECEPTION



RECEPTION

# Casa Apartments, East India Dock Road, London, E14 6DQ



RECEPTION



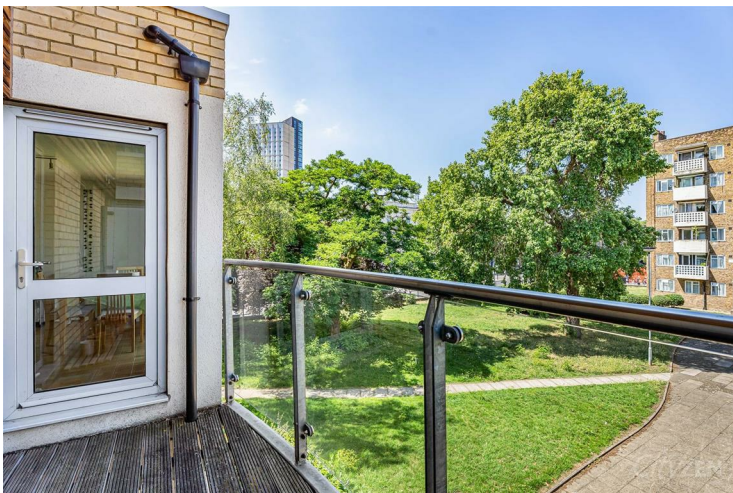
UPPER GALLERY



BALCONY



UPPER GALLERY



BALCONY



BEDROOM

# Casa Apartments, East India Dock Road, London, E14 6DQ



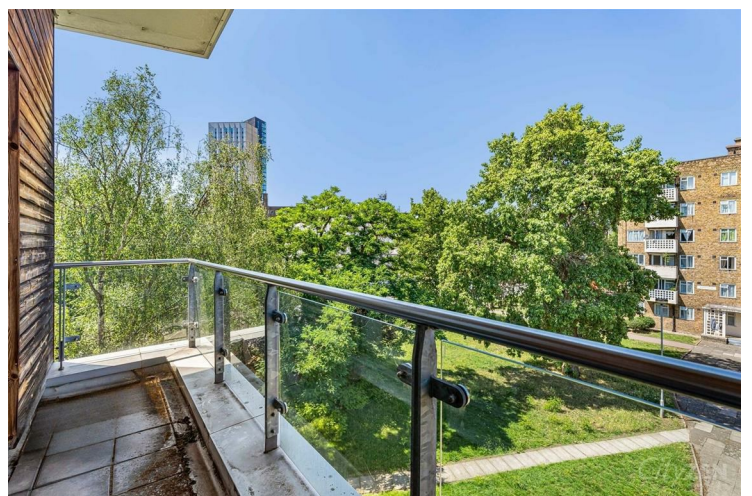
**BEDROOM**



**SHOWER ROOM**



**BALCONY**



**BALCONY**



**BEDROOM**

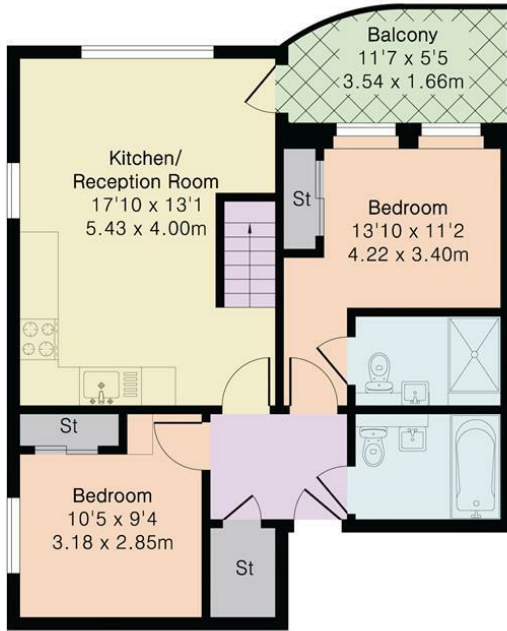


**BEDROOM**

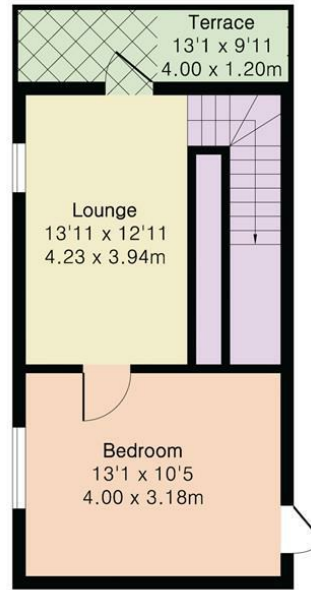
**Approximate Gross Internal Area 928 sq ft - 86 sq m**

Second Floor Area 604 sq ft – 56 sq m

Third Floor Area 324 sq ft – 30 sq m



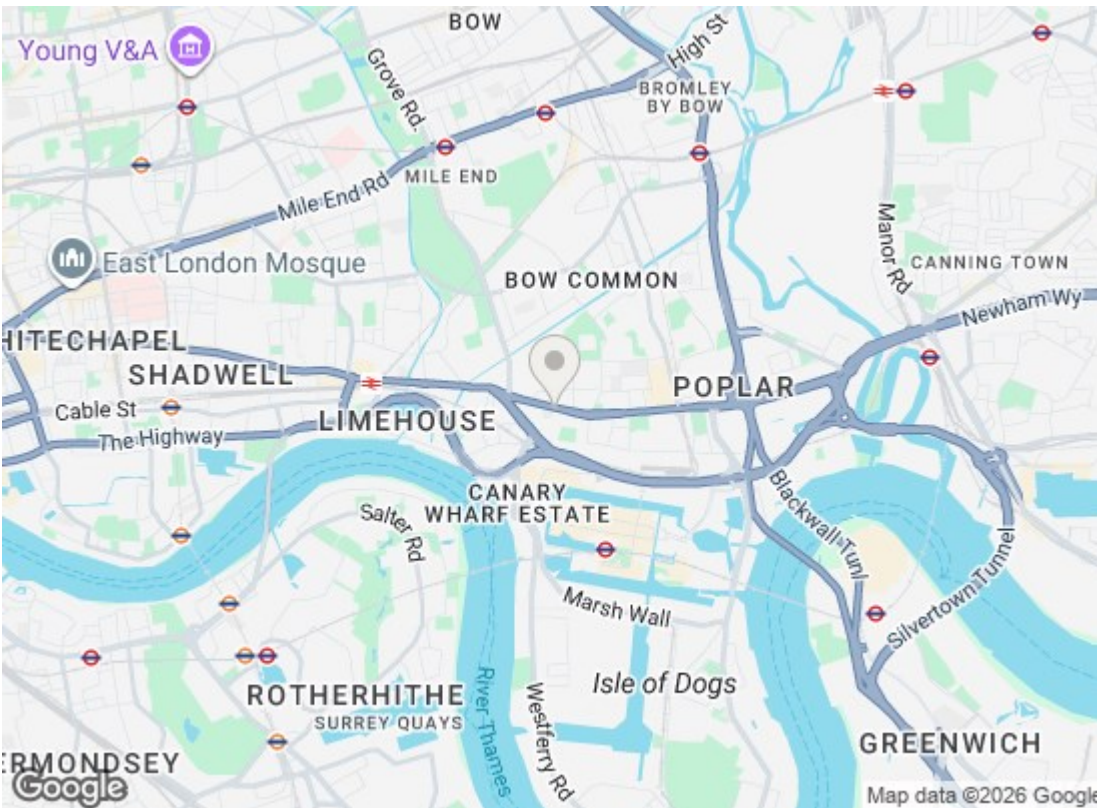
Second Floor



Third Floor



Floor plan produced in accordance with RICS Property Measurement 2nd Edition. Although Pink Plan Ltd ensures the highest level of accuracy, measurements of doors, windows and rooms are approximate and no responsibility is taken for error, omission or misstatement. These plans are for representation purposes only and no guarantee is given on the total square footage of the property within this plan. The figure icon is for initial guidance only and should not be relied on as a basis of valuation.



| Energy Efficiency Rating  |           |           |
|---|-----------|-----------|
|   | Current   | Potential |
| Very energy efficient - lower running costs                     |           |           |
| (92 plus) <b>A</b>  |           |           |
| (81-91) <b>B</b>  | <b>81</b> | <b>81</b> |
| (69-80) <b>C</b>  |           |           |
| (55-68) <b>D</b>  |           |           |
| (39-54) <b>E</b>  |           |           |
| (21-38) <b>F</b>  |           |           |
| (1-20) <b>G</b>   |           |           |
| Not energy efficient - higher running costs                     |           |           |
| <b>England &amp; Wales</b> EU Directive 2002/91/EC              |           |           |
| Environmental Impact (CO <sub>2</sub> ) Rating                  |           |           |
|   | Current   | Potential |
| Very environmentally friendly - lower CO <sub>2</sub> emissions |           |           |
| (92 plus) <b>A</b>  |           |           |
| (81-91) <b>B</b>  |           |           |
| (69-80) <b>C</b>  |           |           |
| (55-68) <b>D</b>  |           |           |
| (39-54) <b>E</b>  |           |           |
| (21-38) <b>F</b>  |           |           |
| (1-20) <b>G</b>   |           |           |
| Not environmentally friendly - higher CO <sub>2</sub> emissions |           |           |
| <b>England &amp; Wales</b> EU Directive 2002/91/EC              |           |           |

We have prepared these property particulars as a general guide to a broad description of the property. They are not intended to constitute part of an offer or contract. We have not carried out a structural survey and the services, appliances and specific fittings have not been tested. All photographs, measurements, floorplans and distances referred to are given as a guide only and should not be relied upon for the purchase of carpets or any other fixtures or fittings. Lease details, service charges and ground rent (where applicable) and council tax are given as a guide only and should be checked and confirmed by your Solicitor prior to exchange of contracts.