

63 Hartington Street, Moss Side, Manchester, M14 4RP

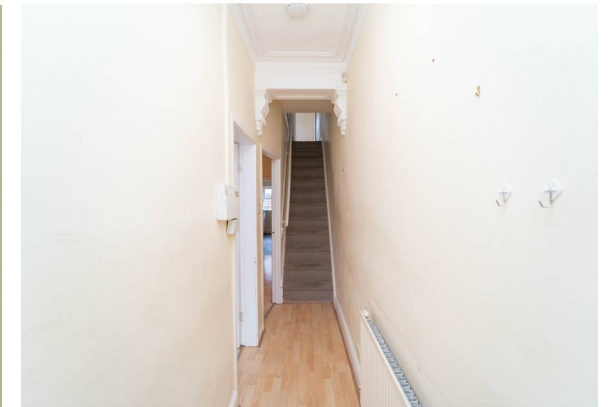


**JP&Brimelow**  
ESTATE AGENTS

# Offers In The Region Of £215,000

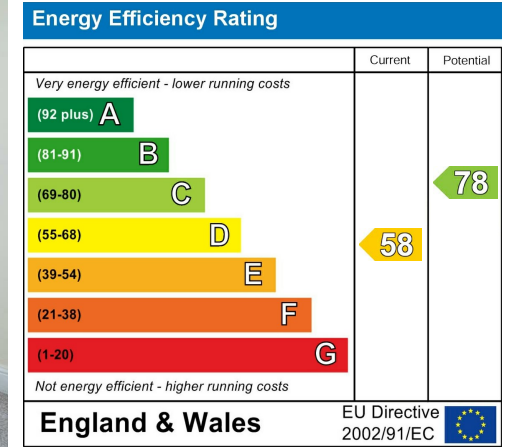
 3  1  2  D

\*\*\*VIDEO TOUR AVAILABLE\*\*\* A spacious, THREE BEDROOM, mid-terrace property, situated in the heart of Moss side off Clarendon Road. Located within walking distance to convenient stores, independent shops and Alexandra Road Park being a five-minute walk with open green space to enjoy. Just a short drive from Manchester city centre, with good transport links on Princess parkway, Moss Side leisure centre is nearby and Clarendon Primary School. In brief the property consists of; an entrance, a lounge with box bay window to the front aspect, a good-sized dining room, a useful understairs storage cupboard, and a fitted kitchen with access out into the rear courtyard. Stairs leading to the first-floor landing reveal two double bedrooms, a further bedroom, and a three-piece bathroom suite. The property benefits from gas fired central heating, high ceilings, an alarm system, and a rear enclosed courtyard. OFFERED WITH NO VENDOR CHAIN.



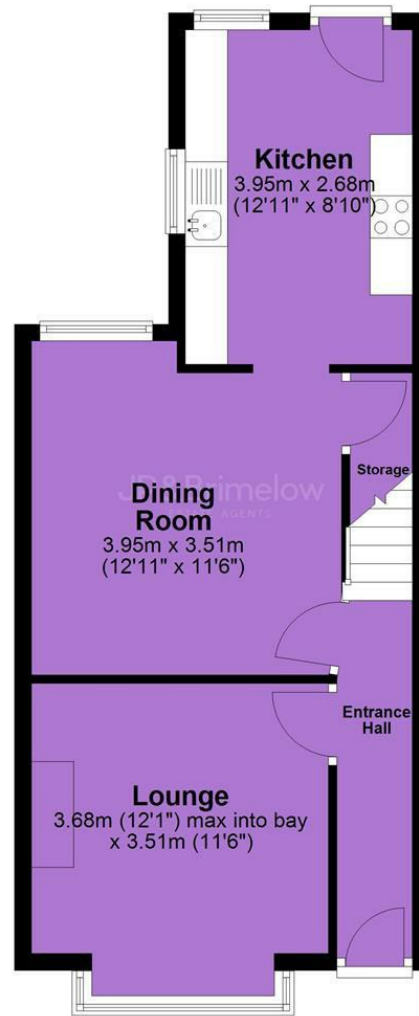


## EPC Chart



Tenure: **Freehold** Council Tax Band: **A**

## Ground Floor



## First Floor



JP & Brimelow Estate Agents Ltd  
430 Barlow Moor Road, Manchester, M21 8AD  
Tel: 0161 8822233  
E: sales@jpbrimelow.co.uk www.jpandbrimelow.co.uk



**JP & Brimelow**  
ESTATE AGENTS

NOTICE: JP & Brimelow Estate Agents Ltd for themselves and for the vendors or lessors of this property whose agents they are give notice that:

- (i) the particulars are set out as a general outline only for the guidance of intending purchasers or lessees, and do not constitute, nor constitute part of, an offer or contract;
- (ii) all descriptions, dimensions, references to the condition and necessary permissions for use and occupation, and other details are given in good faith and are believed to be correct but any intending purchasers or tenants should not rely on them as statements or representations of fact but must satisfy themselves by inspection or otherwise as to the correctness of each of them;
- (iii) no person in the employment of JP & Brimelow Estate Agents Ltd has any authority to make or give any representation or warranty whatever in relation to this property.

jpandbrimelowstateagents

@jpandbrimelow