



ST. ANN'S HILL, SW18

£325,000

- One bedroom
- Share of freehold
- Communal garden
- Off-street parking
- Sought after location
- Energy rating: C





## ABOUT THE HOME

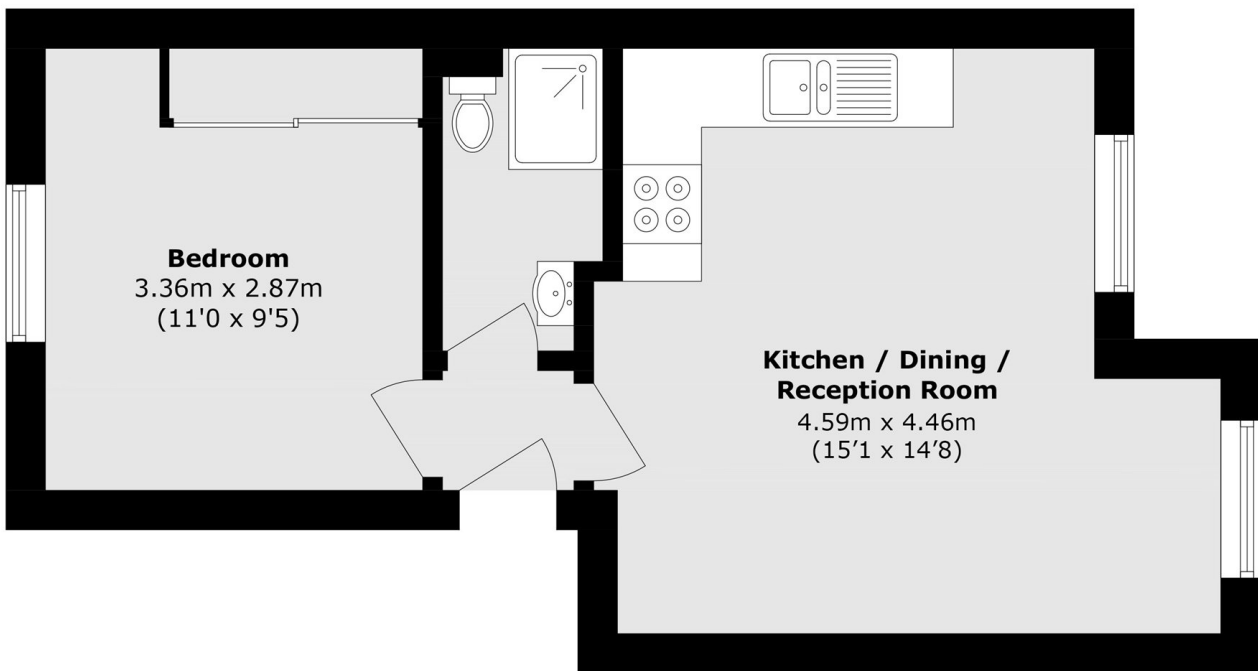
A bright and well-presented one bedroom apartment conveniently located on St Ann's Hill.

Situated on the second floor, this well-proportioned one-bedroom apartment opens into an entrance hall leading to a generously sized double bedroom with fitted mirrored wardrobes and excellent storage. The property further benefits from a bright and spacious open-plan kitchen/reception room complemented by a modern fitted kitchen and large windows allowing for natural light throughout. Adjacent to the hallway is a well-appointed bathroom finished to a modern standard. The property also benefits from a low service charge, access to well maintained communal gardens and private gated parking at the rear of the property.

St Ann's Hill is close to the open spaces of Wandsworth Common and all of the amenities of the Southside Shopping Centre: such as a Waitrose and Virgin Active Gym. There is good transport from Wandsworth Town mainline station and numerous bus services in the area. The area is also well known for its superb schools, both state and private.







Total area (approx.): 32.6 sq. m (350.9 sq. ft)

#### JACKSONS EARLSFIELD

372-374 Garratt Lane,  
Earlsfield, London, SW18 4ES  
Sales: 020 8971 7979  
Lettings: 020 8971 7070

Energy Rating: C We aim to make our particulars both accurate and reliable. However they are not guaranteed; nor do they form part of an offer or contract. If you require clarification on any points then please contact us, especially if you're traveling some distance to view. Please note that appliances and heating systems have not been tested and therefore no warranties can be given as to their good working order.