



## PARRS WAY, W6

£1,100,000

Two bedrooms  
Two bathrooms  
Air-conditioning  
Balcony  
Secure underground parking  
Health club including swimming pool

@marshandparsons  
marshandparsons.co.uk

MARSH &  
PARSONS



# ABOUT THE PROPERTY

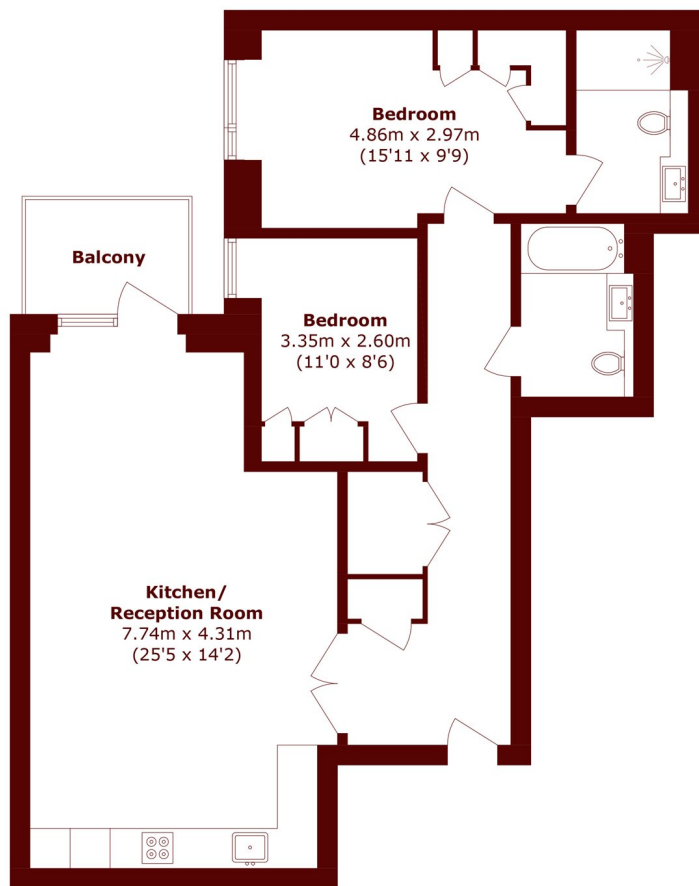
This premium two bedroom, two bathroom luxury apartment is situated inside Holland House, part of the award-winning Fulham Reach riverside development by St George.

A completely lateral apartment on the first floor, you walk in to a generous open plan kitchen, dining and reception room with a south-facing balcony over-looking the private internal communal garden. There are two double bedrooms, both with bespoke fitted wardrobes by Neatsmith, There are two modern bathrooms with underfloor heating, one en suite.

As a resident you would also benefit from a state of the



# STEP INSIDE PARRS WAY



## First Floor

Total area (approx.): 83.0 sq. m (893.4 sq. ft)  
Balcony area (approx.): 4.2 sq. m (45.2 sq. ft)

**Bishops Park**  
020 7993 9888

Energy Rating: We aim to make our particulars both accurate and reliable. However, they are not guaranteed; nor do they form part of an offer or contract. If you require clarification on any points then please contact us, especially if you're traveling some distance to view. Please note that appliances and heating systems have not been tested and therefore no warranties can be given as to their good working order

**MARSH &  
PARSONS**