



JON-PAUL BRAMPTON POWERED BY **exp** TM UK

@jon-paul.brampton@exp.uk.com

🌐 jonpaulbrampton.exp.uk.com

📞 07359 015 020

Russets, The Dean, Wingrave, Buckinghamshire

Offers Over £750,000

🛏 5 🚿 2 🚗 3

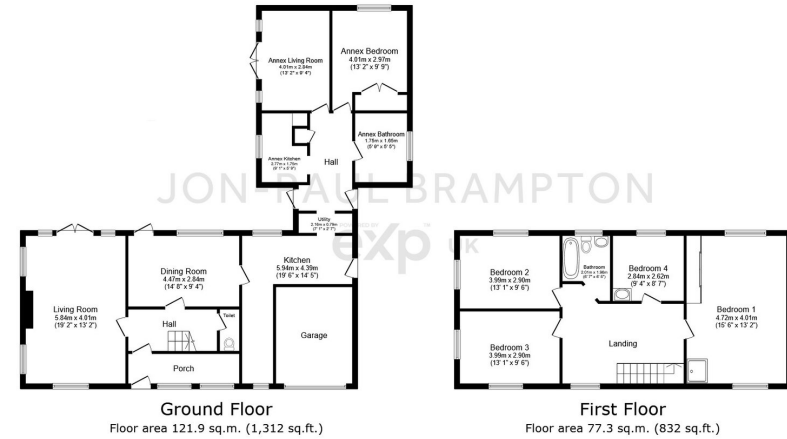


- Detached family home
- Self-contained annexe
- Five bedrooms
- Garage
- Large plot and garden
- Three reception rooms
- Two bathrooms
- Cul-de-sac location
- Charming village location
- Watch the video tour !





JP presents...Russets, a much loved detached family home with self-contained annexe, situated on a generous plot in this tucked away spot in Wingrave.



Total floor area: 199.2 sq.m. (2,144 sq.ft.)

This floor plan is for illustrative purposes only. It is not drawn to scale. Any measurements, floor areas (including any total floor area), openings and orientations are approximate. No details are guaranteed, they cannot be relied upon for any purpose and do not form any part of any agreement. No liability is taken for any error, omission or misstatement. A party must rely upon its own inspection(s). Powered by www.Propertybox.io

JON-PAUL BRAMPTON
exp UK

Energy performance certificate (EPC)		
2 The Dean Wingrave MIDGLANDS MK22 4PZ	Energy rating D	Valid until: 4 May 2028 Certificate number: 2031-9115-5114-2711-7214
Property type	Detached house	
Total floor area	135 square metres	
Rules on letting this property		
Properties can be let if they have an energy rating from A to E.		
You can read guidance for landlords on the regulations and exemptions https://www.gov.uk/guidance/domestic-english-leased-property-minimum-energy-efficiency-standards-landlords-guidance		