



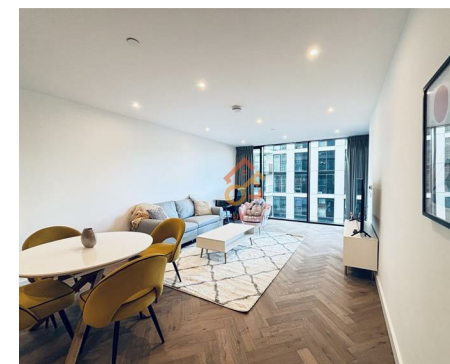
Let **UK** Home

**2 Bedrooms**

**Flat**

Located in London

**£4,000 Per Month**



[info@letukhome.co.uk](mailto:info@letukhome.co.uk)

<https://www.letukhome.co.uk/>

01795 358 886



## 3 Merino Gardens London

E1W 2DP



Let UK Home are excited to offer this 2-bedroom apartment with convenient transportation and excellent location.

The property is a star property located in a scarce area in the center of London. It is located in East London, backed by the new Chinese Embassy and adjacent to the Tower Bridge.

This property comprises a large bright open plan kitchen and living room leading to a large private balcony with great views, two double bedrooms with wardrobe (master en-suite), a large family sized bathroom and ample storage.

This development boasts an extensive suite of luxury resident amenities. Alongside Berkeley's standard premium offerings including concierge service, swimming pool and fully equipped gym, residents will gain exclusive access to unique on-site facilities such as a simulated golf bay, private reception lounges and a dedicated cinema room.

The area benefits from outstanding educational links with a host of top-tier universities easily reachable, including Guildhall School of Music and Drama, Cass Business School, Queen Mary University of London, London South Bank University, City, University of London and King's College London.

Excellent transport connections are provided via four nearby transport hubs: Tower Hill, Aldgate East, Wapping and Shadwell. Residents can travel across the capital effortlessly using the District, Circle and Hammersmith & City Underground lines,

# 3 Merino Gardens London

## £4,000 Per Month



- 7th Floor
- The Spa & Swimming Pool
- The Gym
- Sauna & Steam Room
- Walkable to Universities

- 24h Security & Concierge Service
- Treatment Room
- Cinema & Game Room
- East London
- EPC Rating: B



## Two Bedrooms

TOTAL AREA: 84 SQ M 909 SQ FT



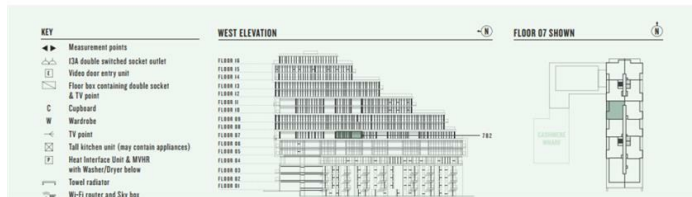
VIEWS WEST OVER WATER GARDEN



Two Bedroom

107  
LONDON DOCK

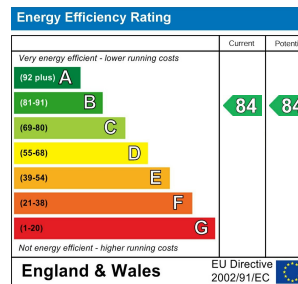
KITCHEN	3.40m x 2.75m	11'2" x 9'0"
LIVING / DINING ROOM	5.85m x 3.95m	19'4" x 13'0"
MASTER BEDROOM	3.56m x 3.00m	11'9" x 9'10"
BEDROOM 2	3.93m x 2.75m	12'11" x 9'0"
TERRACE	8 SQ M	91 SQ FT



**Council Tax Band: F**

**Local Authority:**

Agents Note: Whilst every care has been taken to prepare these particulars, they are for guidance purposes only. All measurements are approximate and are for general guidance purposes only and whilst every care has been taken to ensure their accuracy, they should not be relied upon and potential buyers/tenants are advised to recheck the measurements.



Let **UK** Home

3F 2 Eastbourne Terrace

Paddington

London

W2 6LG

01795 358 886

info@letukhome.co.uk

<https://www.letukhome.co.uk/>