



## 191 Salmon Street, London, NW9 8NE

**\*LOCATED ON ONE OF THE MOST SOUGHT AFTER ROADS IN THE ENTIRE AREA\*** We are delighted to bring to the market this superb two double bedroom maisonette located on Salmon Street. This chain free property offers excellent room sizes throughout and benefits from a long lease and a garage within a small block, which has an independent long lease lease.

Internally the property briefly comprises of a welcoming entrance hall with built in storage, a large kitchen, a spacious lounge, two double bedrooms and a family bathroom. Externally the property boasts well manicured gardens and ample parking spaces which are set back from the main road.

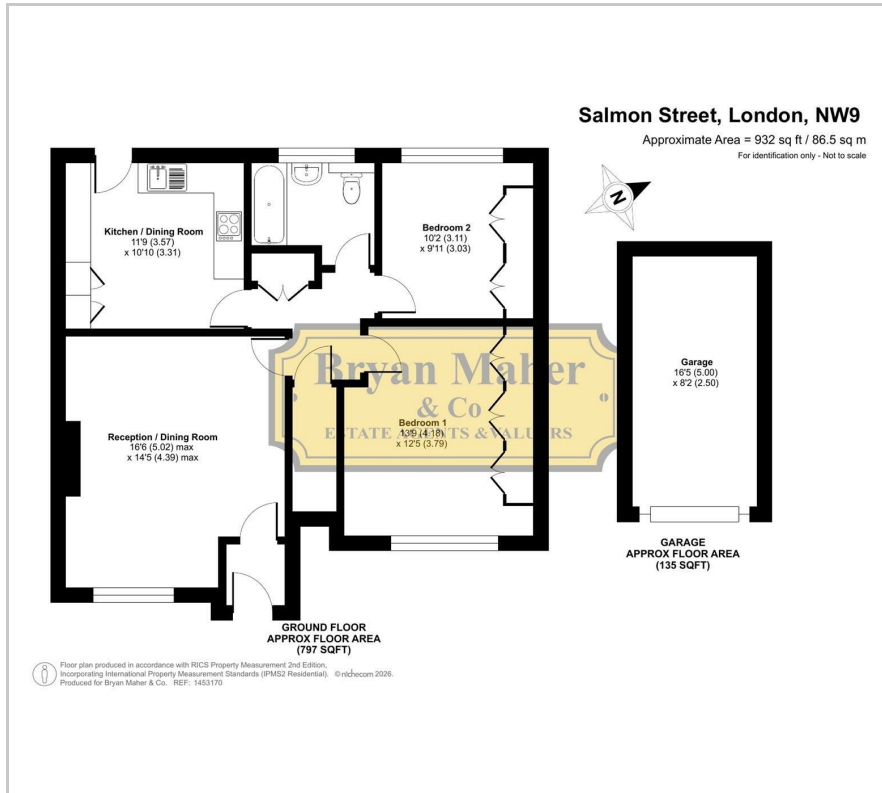
Access to Fryent Country Park is just a minutes walk away, where you will benefit from tranquil countryside walks and amazing views. This is also an ideal open space for kids to play.

If you are looking for a special, ground floor residence, in an absolute prime location, then we strongly advise an early viewing in order to avoid disappointment.

- TWO DOUBLE BEDROOM MAISONETTE
- HIGHLY SOUGHT AFTER SALMON STREET LOCATION
- LARGE FITTED KITCHEN
- BRIGHT SPACIOUS LOUNGE
- LONG LEASE
- GARAGE WITHIN A SMALL BLOCK
- BACKING ONTO FRYENT COUNTRY PARK
- CHAIN FREE SALE

**£409,950**

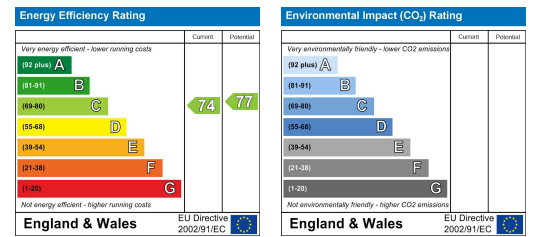
# Floor Plan



# Area Map



# Energy Efficiency Graph



These particulars, whilst believed to be accurate are set out as a general outline only for guidance and do not constitute any part of an offer or contract. Intending purchasers should not rely on them as statements of representation of fact, but must satisfy themselves by inspection or otherwise as to their accuracy. No person in this firm's employment has the authority to make or give any representation or warranty in respect of the property.

