



Man Ilyfryd

BALA

Man Hyfryd, Cefn Ddwysarn
£475,000





Man Hyfryd

Cefn Ddwysarn, Bala

Nestled at the end of a quiet private lane and cradled by the soothing flow of a gentle stream, Man Hyfryd is a rare find.

Council Tax band: G

Tenure: Freehold

EPC Energy Efficiency Rating: E

EPC Environmental Impact Rating: E

- Beautifully Restored Former Watermill
- Set in Approximately Two Acres
- Charming Streamside Location
- Interiors Full of Character
- Light-Filled Open-Plan Living Spaces
- Generous Principal Bedroom Suite
- Versatile Layout with Home Office
- Close to Bala & Outdoor Adventures





Man Hyfryd

Cefn Ddwysarn, Bala

Nestled at the end of a quiet private lane and cradled by the soothing flow of a gentle stream, Man Hyfryd is a rare find.

Council Tax band: G

Tenure: Freehold

EPC Energy Efficiency Rating: E

EPC Environmental Impact Rating: E

- Beautifully Restored Former Watermill
- Set in Approximately Two Acres
- Charming Streamside Location
- Interiors Full of Character
- Light-Filled Open-Plan Living Spaces
- Generous Principal Bedroom Suite
- Versatile Layout with Home Office
- Close to Bala & Outdoor Adventures





Man Hyfryd

Cefn Ddwysarn, Bala

Nestled at the end of a quiet private lane and cradled by the soothing flow of a gentle stream, Man Hyfryd is a rare find.

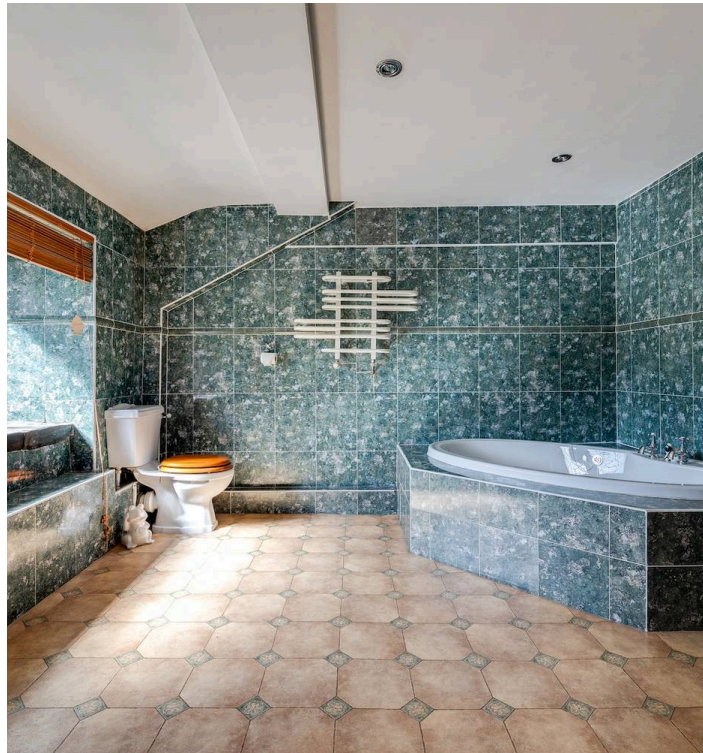
Council Tax band: G

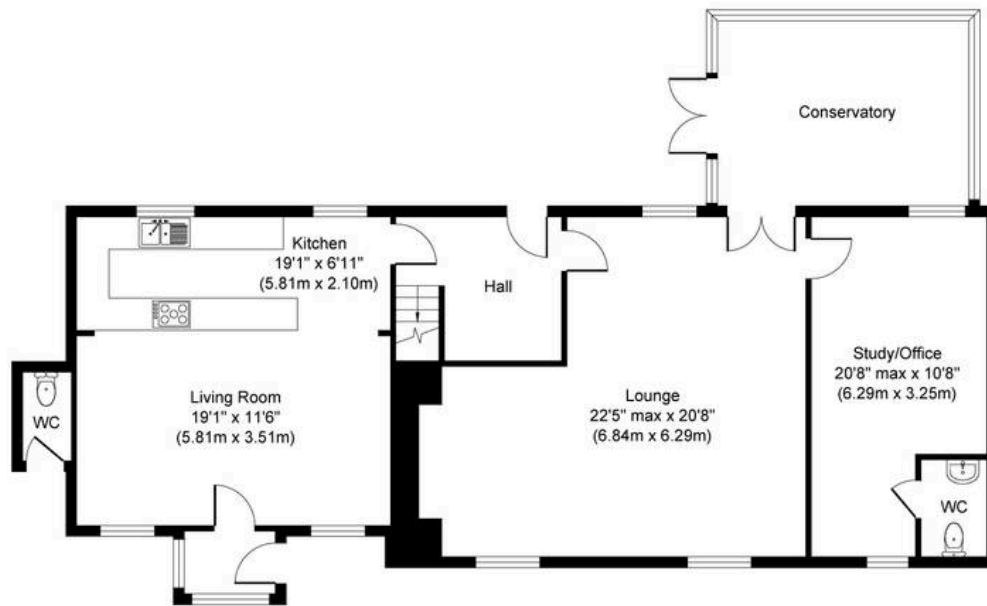
Tenure: Freehold

EPC Energy Efficiency Rating: E

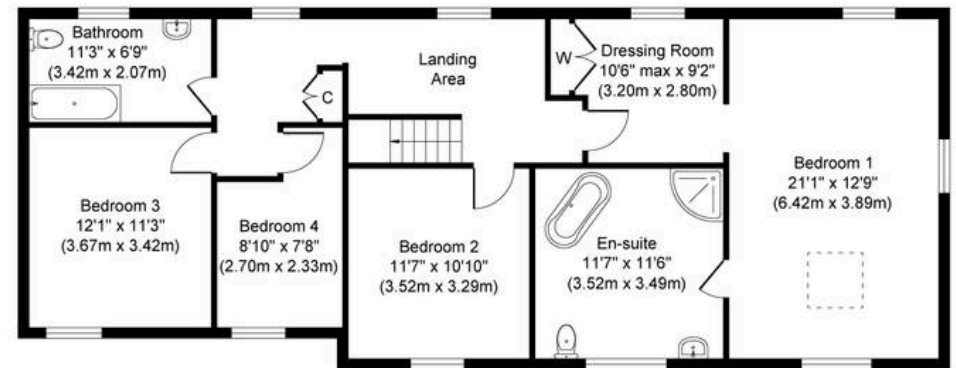
EPC Environmental Impact Rating: E

- Beautifully Restored Former Watermill
- Set in Approximately Two Acres
- Charming Streamside Location
- Interiors Full of Character
- Light-Filled Open-Plan Living Spaces
- Generous Principal Bedroom Suite
- Versatile Layout with Home Office
- Close to Bala & Outdoor Adventures





Ground Floor
Approximate Floor Area
1326 sq. ft
(123.21 sq. m)



First Floor
Approximate Floor Area
1104 sq. ft
(102.54 sq. m)

Whilst every attempt has been made to ensure the accuracy of the floor plan contained here, measurements of doors, windows, rooms and any other items are approximate and no responsibility is taken for any error, omission, or mis-statement. The measurements should not be relied upon for valuation, transaction and/or funding purposes. This plan is for illustrative purposes only and should be used as such by any prospective purchaser or tenant. The services, systems and appliances shown have not been tested and no guarantee as to their operability or efficiency can be given.



Currans North Wales

57 Wrexham Street, Mold - CH7 1ET

01352 877999 • salesnw@curranshomes.co.uk • <http://www.curranshomes.co.uk>