



Pico House, Battersea Powers Station, London, SW11

£4,950 pcm

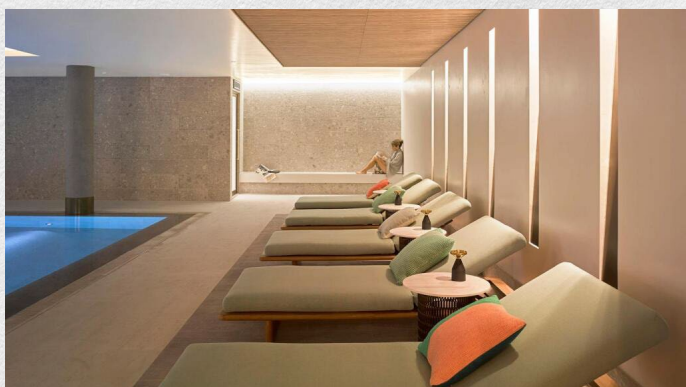
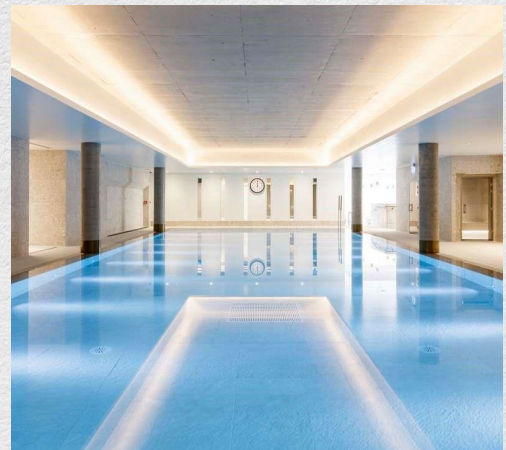
Spacious 2-bedroom, 2 bathroom apartment located on the third floor of Pico House at the highly sought after Battersea Power Station development.

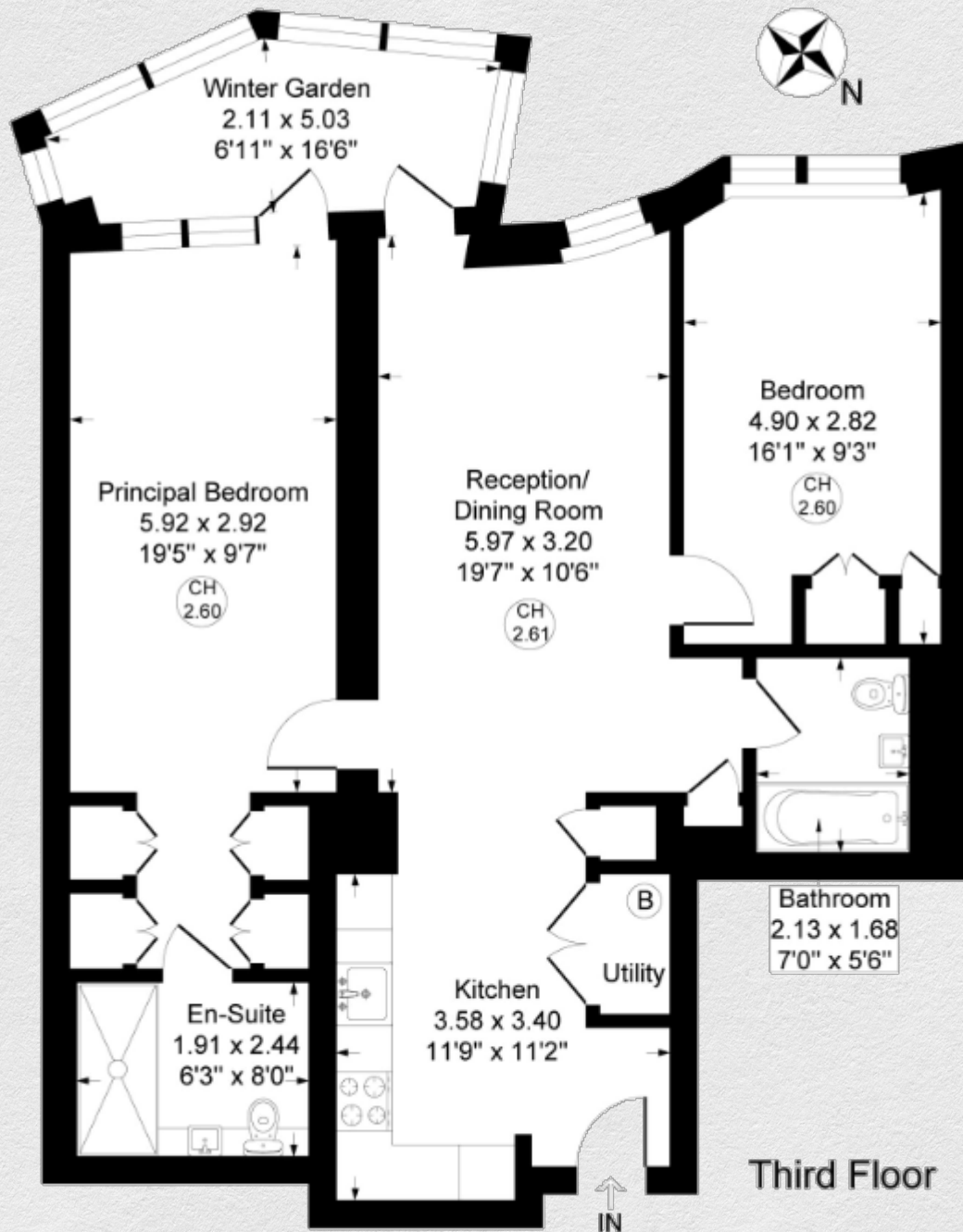
- Third floor apartment
- 2 bedrooms
- 2 bathrooms
- Private winter garden
- Luxury residents' facilities
- 980 sq ft of living space
- Highly sought after location
- 24-hour concierge and security
- Excellent transport links

This large 980 sq ft apartment is equipped with all modern facilities and amenities needed to complement a comfortable lifestyle including herringbone wood flooring.

The apartment boasts fabulous views and features a generously sized winter garden. The thoughtfully conceived floor plan provides a harmonious blend of relaxation and entertainment spaces, featuring an open plan, fully fitted kitchen with a wine fridge, and spacious living room. Adding to its prestige, this accommodation is fitted with climate-controlled comfort throughout and underfloor heating. The bedrooms have luxurious furnishings with fitted wardrobes; the principal bedroom comprises a dressing area and en suite bathroom with a bath and a separate shower. The second bedroom also has fitted wardrobe, providing ample storage.

This apartment is perfect for anyone seeking a luxurious living experience in a prime location. With its modern facilities, spacious living areas, and breath-taking views, it offers the perfect combination of comfort and style.





Third Floor

Address:

Pico House, Battersea Power Station, London, SW11

	sq ft	bed	bath
internal	980	2	2

*** For illustration purposes only. Could not be to scale. One-London aims to ensure accuracy but is not liable for any discrepancies.*