







Property Features

Three Bedrooms | Semi-Detached Period Home | Spacious Kitchen Diner |
Garage & Off-Street Parking | Character Features Throughout | Low-
Maintenance Rear Garden | Walking Distance to Corbridge Village
Centre

Services

Council Tax | Band D **EPC Rating** | D59

Services | Mains electric, water and drainage

Tenure | Freehold

Mileages (Approximately)

Hexham 4 miles | Newcastle International Airport 17 miles | Newcastle
City Centre 16 miles

About

Beautifully presented and full of character, this spacious three-bedroom semi-detached home seamlessly blends period charm with modern comforts.

Offering bright and versatile accommodation throughout, the property features a welcoming living room with bay window and feature fireplace, an impressive open-plan kitchen diner with wood-burning stove and underfloor heating, and a separate utility room. Upstairs, three bedrooms provide excellent accommodation, complemented by a stylish family bathroom.

Thoughtfully updated while retaining many original features, this light-filled home offers a practical layout and generous proportions, creating an ideal setting for modern family living with ample storage and flexible everyday spaces.









Outdoor Space

To the front, the property benefits from a small walled garden, off-street parking, and access to the garage, which has recently been fitted with an electric door. A gated paved area beside the garage offers additional versatility, currently used by the owners as either extra parking or a useful storage and BBQ area.

The rear garden features both decking and patio seating areas, ideal for enjoying the sun, alongside a lawned section that offers outdoor space while remaining relatively low maintenance.

Previous planning permission has been granted for an extension, presenting potential for further development, subject to any necessary renewals or consents.

Location

Situated within the highly desirable village of Corbridge, in the heart of the picturesque Tyne Valley, the property enjoys an excellent setting. The village offers a wide range of everyday amenities including independent shops, restaurants, pubs, community services, a doctor's surgery, and a local garage.

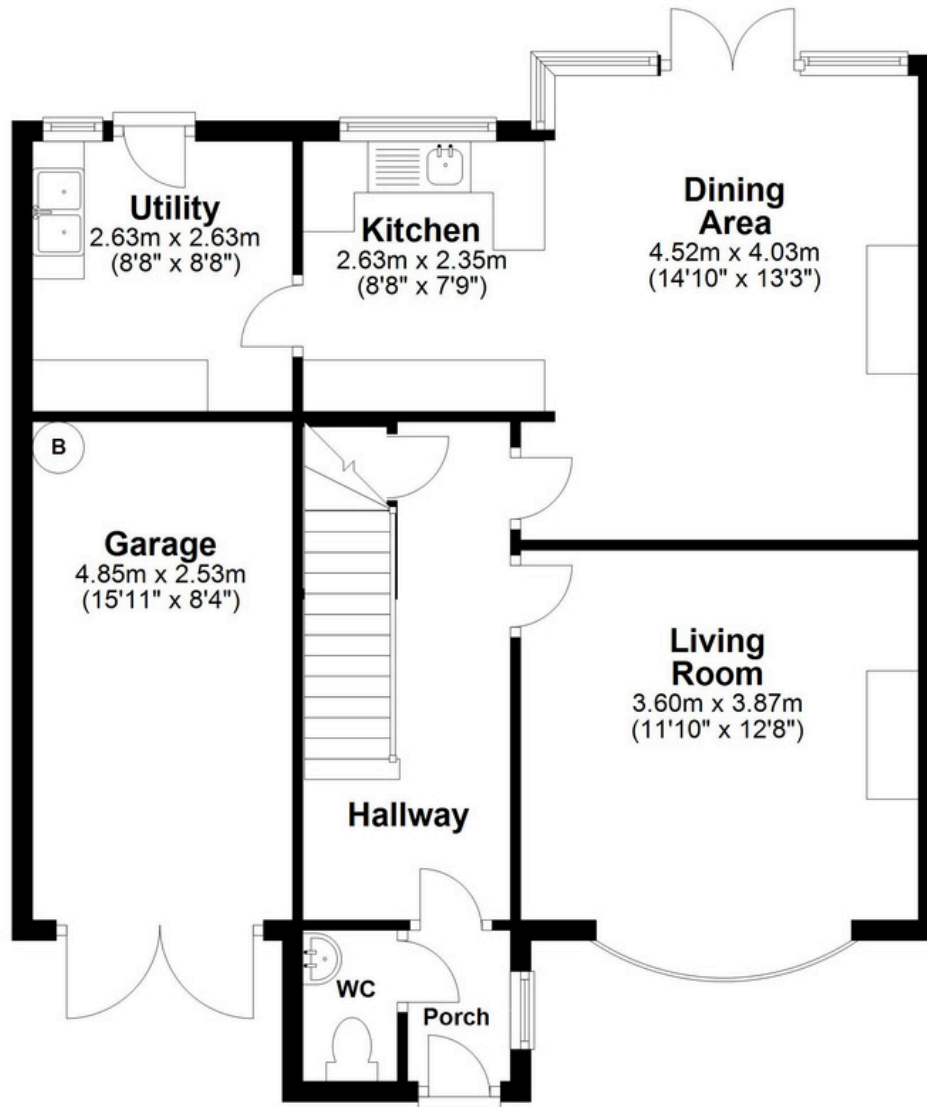
Corbridge is particularly well regarded for schooling, with a first school, middle school, and several nurseries located within the village, while the highly regarded Queen Elizabeth High School is nearby in Hexham.

The area is also ideal for commuters, benefiting from excellent transport connections and convenient access to Newcastle International Airport.

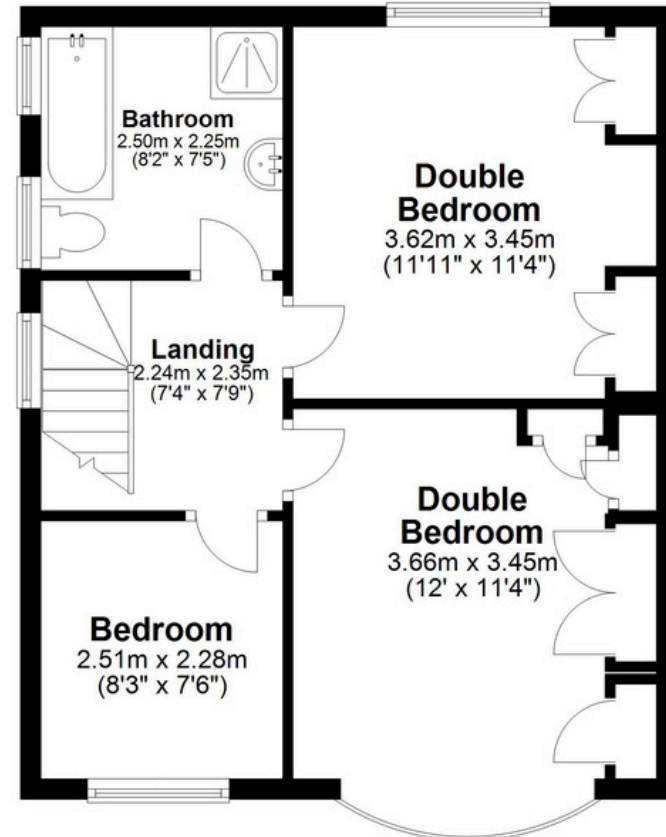


Floorplans

Ground Floor



First Floor




For further enquiries or to book a viewing please contact our office on

t | 01434 632080


e | home@antonestates.co.uk



Property Address | 5 Aydon Way, NE45 5EE
what3words /hero.larger.delusions

 01434 632080

 19 Middle Street, Corbridge, NE45 5AT

 www.antonestates.co.uk

- These particulars do not form any part of any offer or contract.
- They are intended to give a fair description of the property, but neither Anton Estates nor the vendor accept any responsibility for any error they may contain, however caused. Any intending purchaser must therefore satisfy themselves by inspection or otherwise as to their correctness.
- Neither Anton Estates nor any of their employees has any authority to make or give any further representation or warranty in relation to this property.