

A spacious two bedroom property with lounge/ diner/ kitchen, lean to, bathroom & enclosed rear garden.

The Accommodation Comprises

Obscured UPVC double glazed door to:

Entrance Area

Tiled flooring, cupboard housing meters, archway to:

Lounge/Dining 20' 7" x 12' 0" (6.27m x 3.65m)

Stairs to first floor, under stairs storage cupboard, UPVC double glazed window to front elevation, electric fireplace, further UPVC double glazed window to rear elevation, radiator, opening to:

Kitchen 12' 10" x 7' 0" (3.91m x 2.13m)

UPVC double glazed window looking into lean to, a range of base cupboards and matching eye level units, stainless steel sink with mixer tap, space for, fridge/freezer, space for washing machine, oven and grill with extractor hood over, side door to:

Lean to 20' 11" x 11' 8" (6.37m x 3.55m) L-shape room maximum measurements

UPVC double glazed windows and door to rear elevation, polycarbonate roof.

First Floor Landing

UPVC double glazed window to side elevation, storage cupboard.

Bedroom One 12' 0" x 10' 2" (3.65m x 3.10m)

UPVC double glazed window to front elevation, radiator.

Bedroom Two 9' 11" x 6' 5" (3.02m x 1.95m)

UPVC double glazed window to rear elevation, radiator, access to loft via hatch.

Bathroom 8' 3" x 6' 10" (2.51m x 2.08m)

Obscured UPVC double glazed window to rear elevation, bath with shower over, low level WC, wash hand basin with mixer tap, lino flooring, boiler to wall.

Outside

To the front of the garden is a small forecourt, mainly laid to slate and shingle and enclosed by low brick wall. The rear garden is mainly laid to lawn with patio and path, enclosed by panelled fences.

General Information

Construction - Traditional

Water Supply – Portsmouth Water

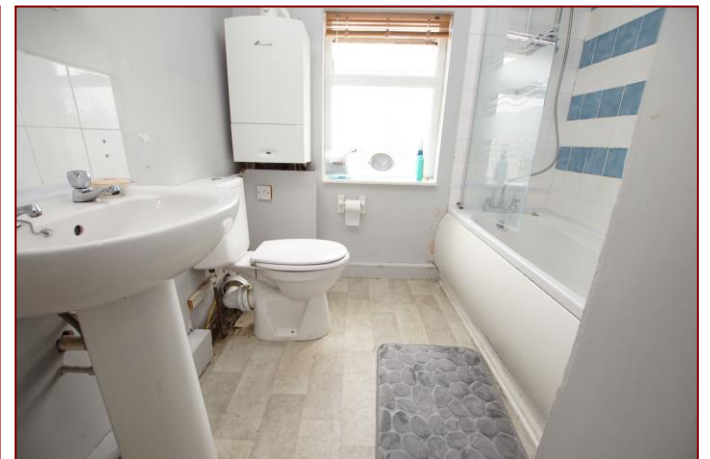
Electric Supply – Mains

Gas Supply - Mains

Sewerage - Mains Mobile & Broadband coverage:

<https://checker.ofcom.org.uk/>

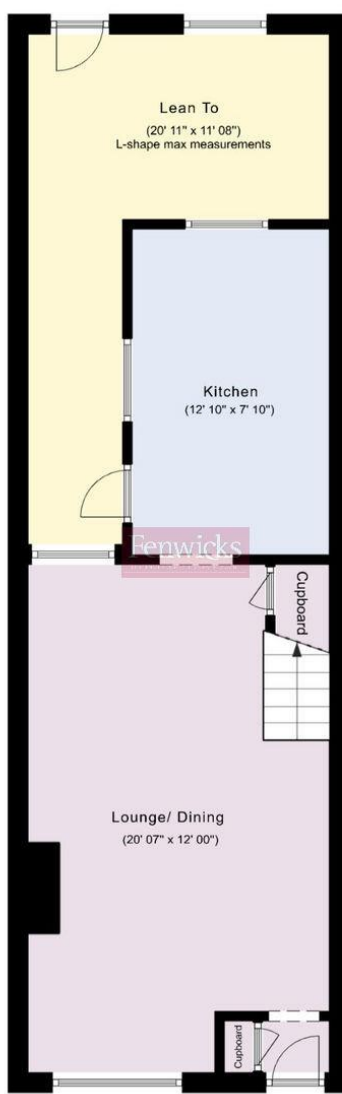
Flood risk: www.gov.uk/check-long-term-flood-risk



Awaiting EPC

Tenure: Freehold

Council Tax Band: B



Disclaimer: These particulars are set out as a general outline in accordance with the Consumer Protection from Unfair Trading Regulations 2008 (CPR's) and Business Protection from Misleading Marketing Regulations 2008 (BPR's) only for the guidance of intending purchasers or lessees, and do not constitute any part of an offer or contract. Details are given without any responsibility, and any intending purchasers, lessees or third parties should not rely on them as statements or representations of fact, but must satisfy themselves by inspection or otherwise as to the correctness of each of them.

We have not carried out a structural survey and the services, appliances and specific fittings have not been tested. All photographs, measurements, floor plans and distances referred to are given as a guide only and should not be relied upon for the purchase of carpets or any other fixtures or fittings. Gardens, roof terraces, balconies and communal gardens as well as tenure and lease details cannot have their accuracy guaranteed for intending purchasers. Lease details, service ground rent (where applicable) are given as a guide only and should be checked and confirmed by your solicitor prior to exchange of contracts.

No person in the employment of Fenwicks Estates Ltd has any authority to make any representation or warranty whatever in relation to this property. Purchase prices, rents or other prices quoted are correct at the date of publication and, unless otherwise stated, exclusive of VAT.

Data Protection: We retain the copyright in all advertising material used to market this Property.

Money Laundering Regulations 2017: Intending purchasers will be required to produce identification documentation once an offer is accepted.



£175,000

Russell Street, Gosport, PO12 3JD

DRAFT DETAILS

Fenwicks

THE INDEPENDENT ESTATE AGENT

Fenwicks - Gosport Office: 02392 529889 www.fenwicks-estates.co.uk