

Longfield Estate, SE1

£280,000

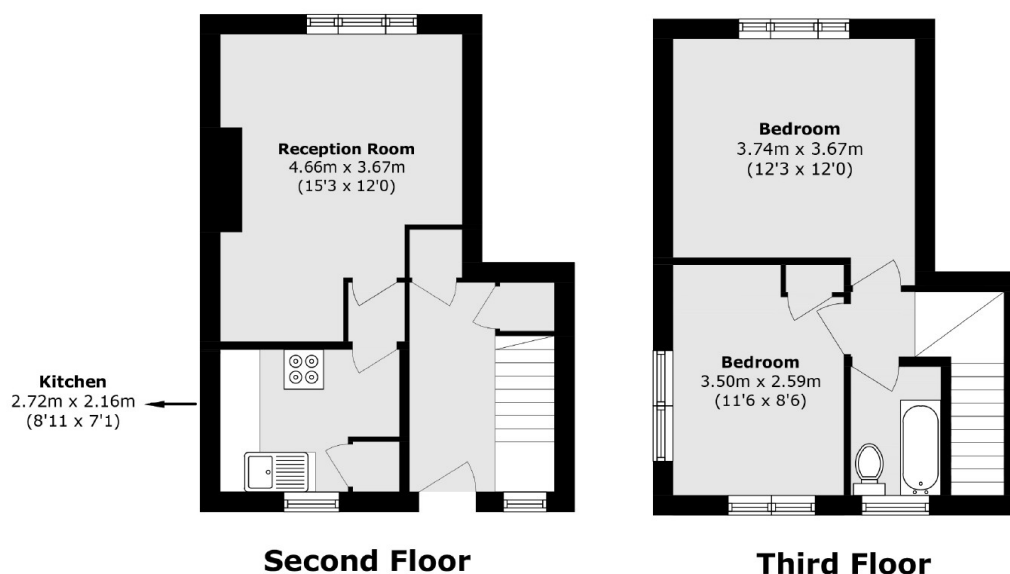
A spacious, split level flat, on the second and third floors, with a separate kitchen and a large living room, two double bedrooms and a three piece bathroom. Sold chain free, with permit parking available.

Dhonau House very well located, close to Bermondsey Underground and South Bermondsey Station, with excellent links into the West End, City and Canary Wharf. It is surrounded by a range of artisan delis, cafés, restaurants and trendy food markets.

Features

- Split Level Flat
- Top Floor - 2nd & 3rd Floors
- Two Double Bedrooms
- Separate Kitchen & Living Room
- Double Glazing
- Permit Parking Available
- Chain Free Sale

Longfield Estate, London, SE1



Total area (approx.): 59.4 sq. m (639.3 sq. ft)