

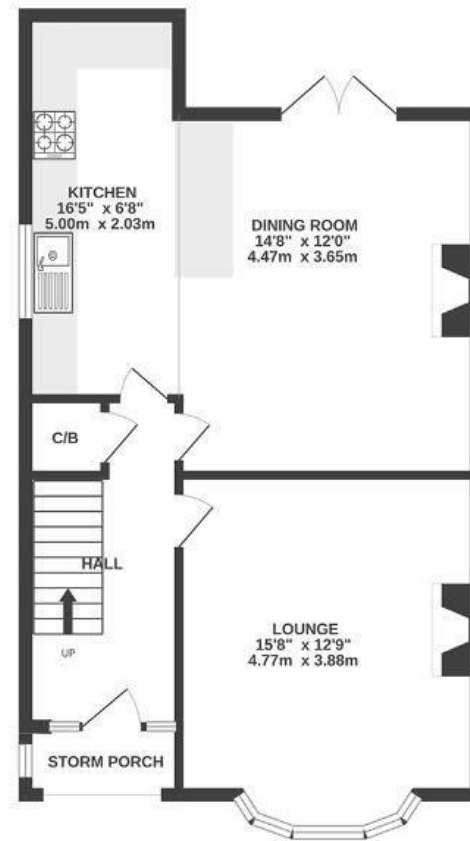
# Summerhill Road

## ST. GEORGE

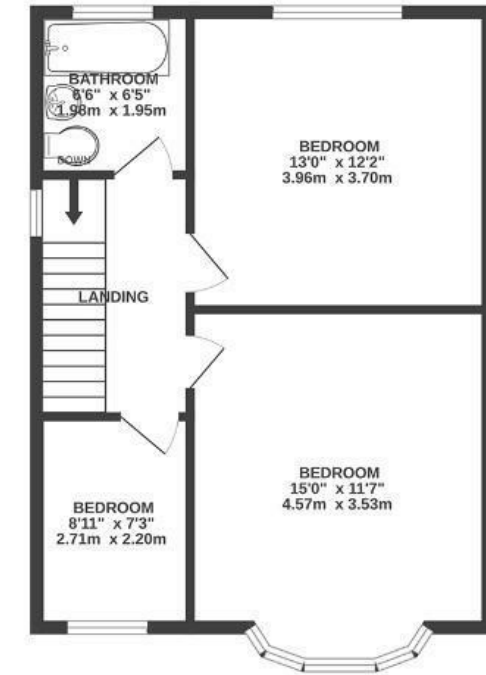
APPROXIMATE FLOOR AREA  
121 SQM / 1300 SQFT



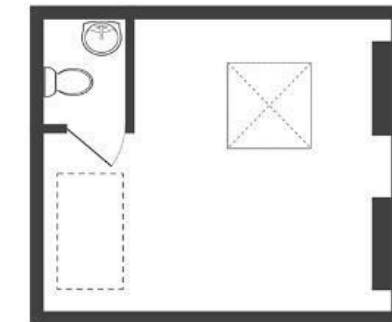
GROUND FLOOR



FIRST FLOOR



LOFT ROOM



Boardwalk

# Summerhill

, BRISTOL



£450,000



3 Bedrooms



BS5 8JT



1 Bathrooms

*We love having supper together in the evening light, enjoying the warmth of our lovely south facing sitting room. We love sitting on our front steps, from here we can see hot air balloons as they float directly overhead, or fireworks all over south Bristol on bonfire night, or just simply an epic sunset with a glass of wine.*

