



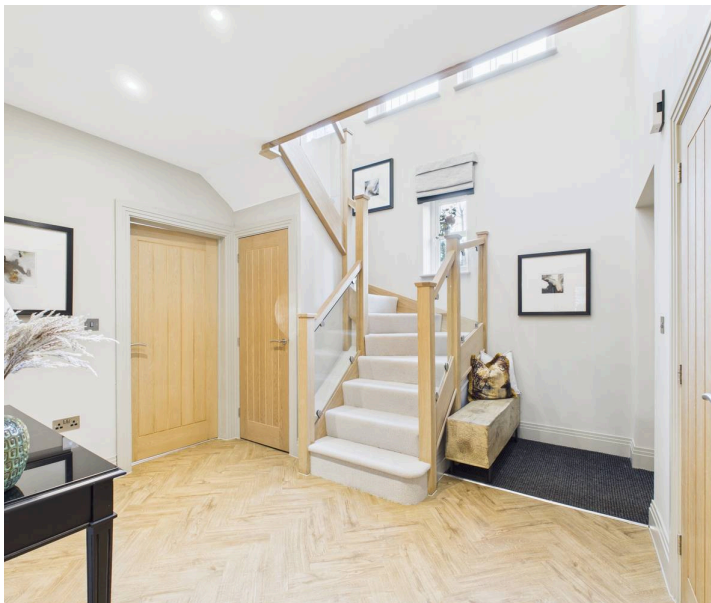
The Dormie, The Fairways

Alnwick

Council Tax band: TBD

Tenure: Freehold

- New build home, The Fairways Alnwick
- Showhome, fully furnished and elegantly styled throughout
- Four bedroom, two bathroom detached property
- Prime front-row position with elevated, panoramic views across Alnwick
- Striking living room with contemporary feature fireplace and French doors opening to a balcony terrace
- Luxury fitted kitchen and dining area flowing into an impressive garden room
- Concealed double garage to the lower ground floor and generous driveway parking
- Generous plot with private garden bordering woodland, offering excellent privacy



Northumberland
Properties

Northumberland Properties are delighted to welcome to the market The Dormie. This stunning new build home occupies one of the most privileged positions within The Fairways, Wynyard Homes' highly regarded development on the edge of Alnwick. Commanding an elevated, front-row outlook across the town and surrounding landscape, this outstanding residence is the final opportunity to acquire this particular house type a design that will not be replicated in future phases.

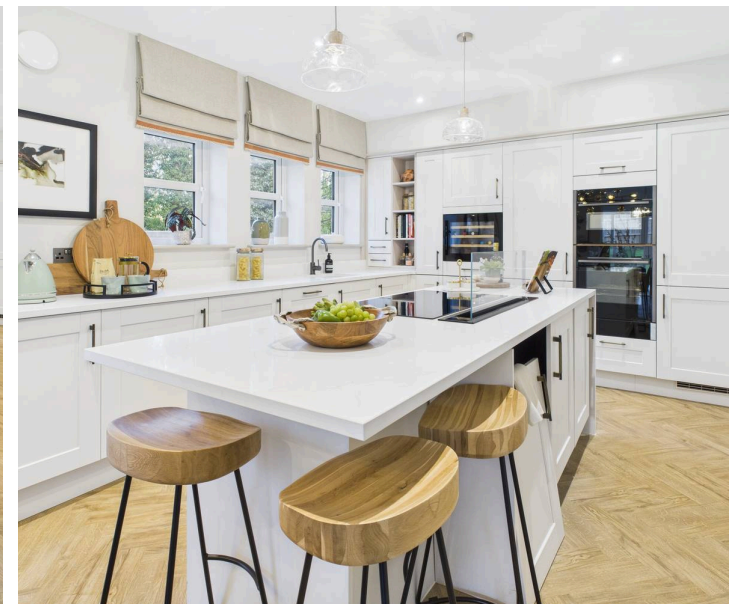
Formerly serving as the development show home, the property is presented in immaculate, turnkey condition, with the benefit of being fully furnished and elegantly styled throughout, showcasing the home's scale, light and thoughtful design at its very best.

This distinctive four-bedroom detached home is arranged over three levels and includes a concealed double garage to the lower ground floor, creating a clean architectural frontage and generous driveway parking.

Entering the home you are welcomed by the elegant decor and a stunning oak and glass staircase. From this central point of this home you find a practical spacious ground floor WC and access to the main reception room which is centred around a striking contemporary fireplace that forms a natural focal point. French doors open directly onto a balcony terrace, perfectly positioned to take in the elevated views across Alnwick.

To the rear, the heart of the home unfolds into a luxury fitted kitchen and dining area, seamlessly connecting to a stunning garden room with views into the garden.

To the side of the property is a further entrance which bring to into a practical boot room followed by the utility, these rooms can also be access through kitchen dining space.



GARDEN

The first floor offers a generous landing leading to the principal bedroom suite, complete with a beautifully appointed en-suite bathroom and built in wardrobes. Three further well-proportioned bedrooms are served by a high-quality family bathroom, featuring both a bath and a separate double shower.

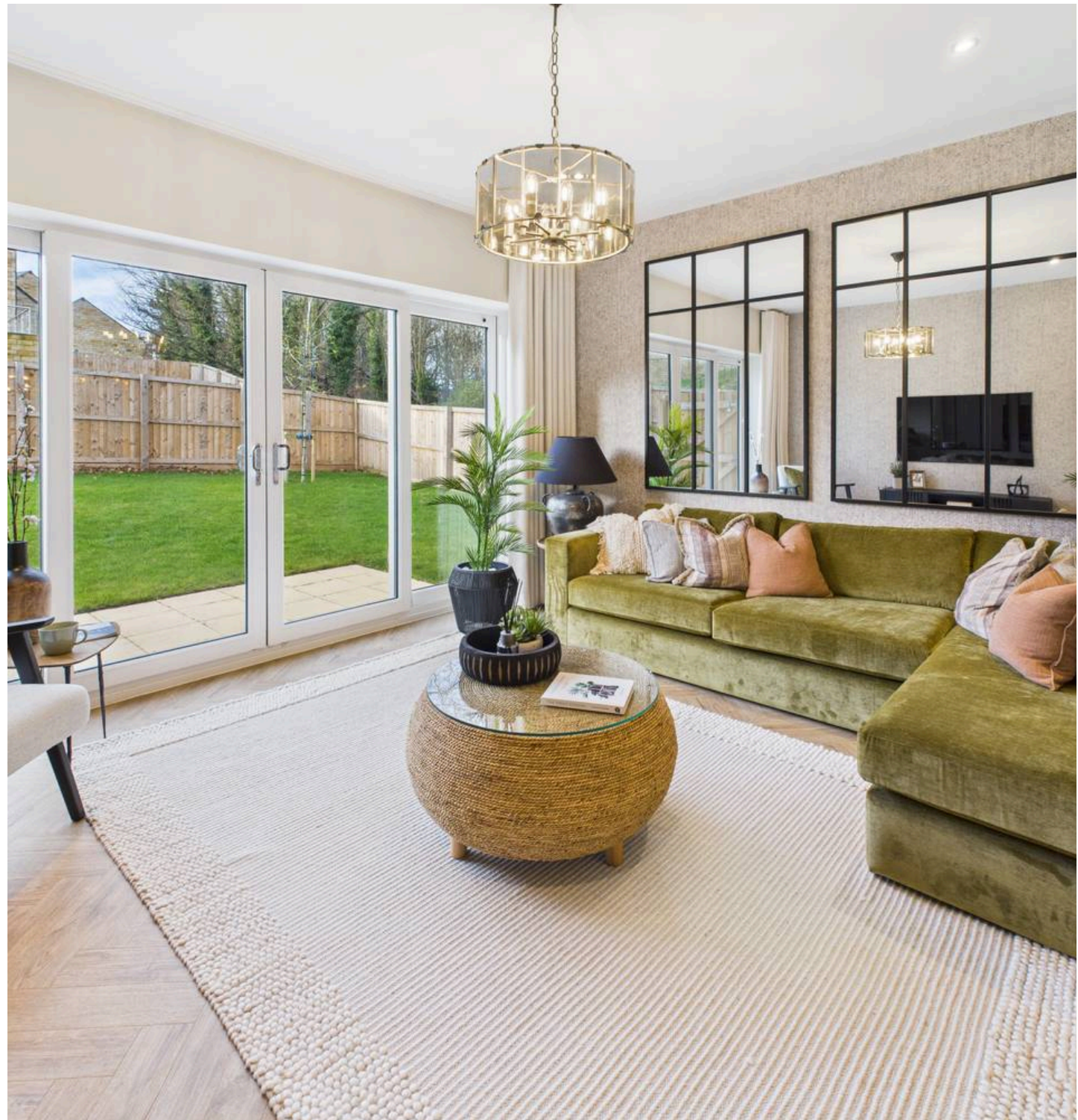
Set on a generous plot, The Dormie enjoys a private garden that borders established woodland, providing a sense of seclusion rarely found within a development setting. The elevated position enhances both privacy and outlook, while the large driveway and integral double garage ensure excellent parking and storage.

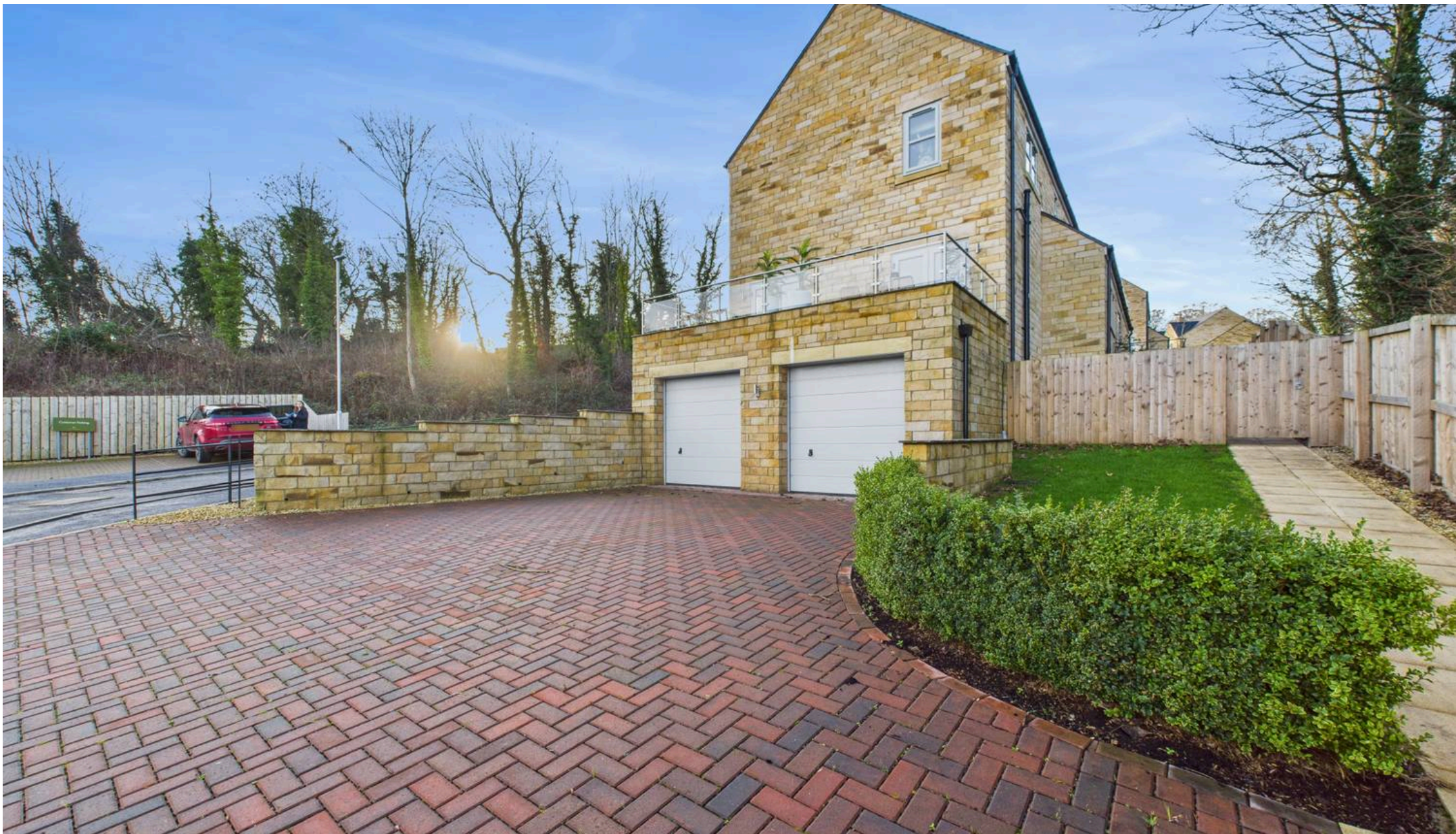
As the last home of its type within The Fairways, and the final release from the first phase, The Dormie represents a truly rare opportunity to secure a standout property in one of Alnwick's most desirable modern developments combining premium build quality, elegant interiors and an exceptional outlook in equal measure.

Double garage

4 Parking Spaces

Double garage with generous driveway parking





Northumberland Properties

12 Market Street, Alnwick - NE66 1TL

01665660910 • info@northumberlandproperties.co.uk • <http://northumberlandproperties.co.uk>



Northumberland
Properties