





Property Description

Connells are marketing this well-presented three-bedroom end-terrace home that blends convenience and comfort. The hall has built-in storage (great for coats and shoes) and a handy W/C. The kitchen is modern and fully integrated with sleek neutral cabinetry, ample cupboard and counter space and still room for freestanding appliances if desired. In the living room there is 2x built-in storage cupboards, dining/desk space and large windows allowing plenty of natural light, creating a spacious and flexible layout ideal for entertaining, relaxing or working from home. The versatile third bedroom completes the ground floor with built-in storage, perfect if you need a guest room or separate office. The garden is accessed through through double doors from the hall and is laid-to-lawn with a patio walkway, shed and access to a store for additional storage.

Upstairs the bedrooms are well-sized with the master having a built-in mirrored sliding wardrobe, and then the contemporary three-piece shower room is home to a heated towel rail, toilet, hand-wash basin with storage, mirrored storage cabinet, shower and built-in storage - great for towels. Further benefits are resident parking, gas central heating and double glazing.

The home is well positioned for families, with a park round the corner, schools for all ages closeby, great transport links throughout Southampton, ample local amenities and healthcare services - Southampton General Hospital just two miles away.



Hallway

Has Built-In Storage & W/C

W/C

Living Room

15' 11" x 11' 9" (4.85m x 3.58m)

Has Dining/Desk Space, Large Windows & 2x Built-In Storage Cupboards

Kitchen

14' 9" x 8' 7" (4.50m x 2.62m)

Fully Integrated with Sleek & Neutral Cabinetry, Ample Cupboard & Counter Space and Freestanding Appliance Space Also.

Bedroom 3

8' 11" x 8' 6" (2.72m x 2.59m)

Has Built-In Storage and on Ground Floor

Stairs Leading To First Floor

Landing

Has Built-In Storage

Bedroom 1

11' 8" x 10' 4" (3.56m x 3.15m)

Has a Built-In Mirrored Sliding Wardrobe

Bedroom 2

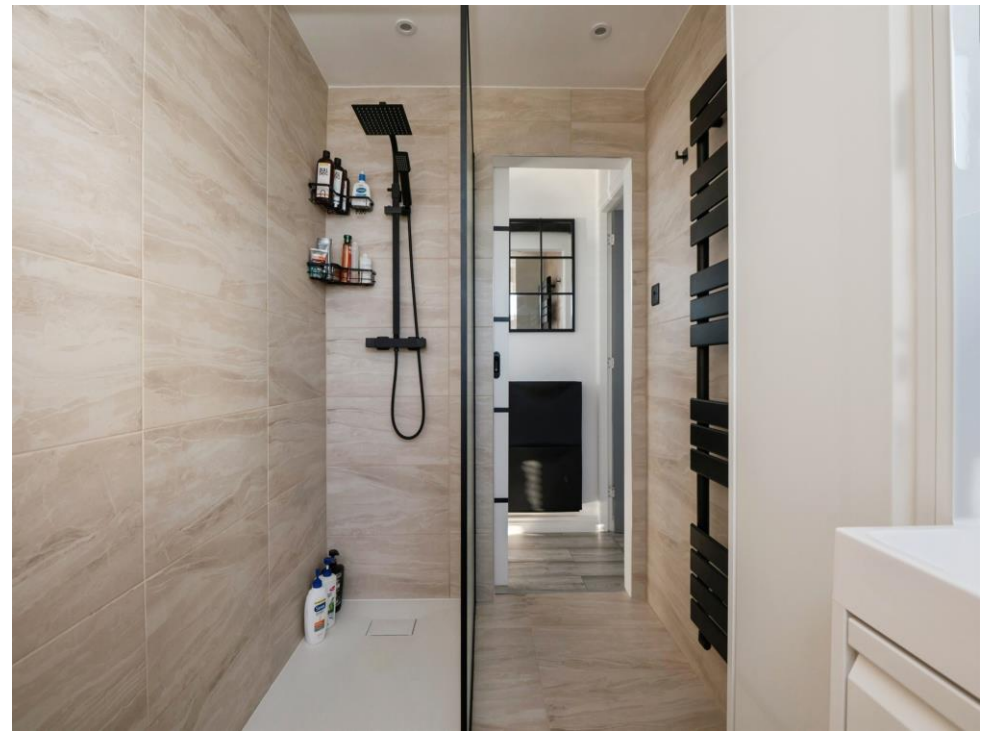
11' 8" x 9' (3.56m x 2.74m)

Shower Room

8' 6" x 5' 7" (2.59m x 1.70m)

Contemporary Three-Piece with Toilet, Hand-Wash Basin with Built-In Storage, Heated Towel Rail, Shower & Built-In Storage Cupboard.









Ground Floor



First Floor

Total floor area 84.7 m² (912 sq.ft.) approx

This floor plan is for illustrative purposes only. It is not drawn to scale. Any measurements, floor areas (including any total floor area), openings and orientation are approximate. No details are guaranteed, they cannot be relied upon for any purpose and they do not form part of any agreement. No liability is taken for any error, omission or misstatement. A party must rely upon its own inspection(s). Powered by www.propertybox.io

Connells

To view this property please contact Connells on

T 02380 789 351
E shirley@connells.co.uk

409 Shirley Road Shirley
SOUTHAMPTON SO15 3JD

EPC Rating: D Council Tax
Band: B

Tenure: Freehold

view this property online connells.co.uk/Property/SSR312639



1. MONEY LAUNDERING REGULATIONS Intending purchasers will be asked to produce identification documentation at a later stage and we would ask for your co-operation in order that there will be no delay in agreeing the sale. 2. These particulars do not constitute part or all of an offer or contract. 3. The measurements indicated are supplied for guidance only and as such must be considered incorrect. Potential buyers are advised to recheck measurements before committing to any expense. 4. We have not tested any apparatus, equipment, fixtures, fittings or services and it is in the buyers interest to check the working condition of any appliances.

Connells Residential is registered in England and Wales under company number 1489613, Registered Office is Cumbria House, 16-20 Hockliffe Street, Leighton Buzzard, Bedfordshire, LU7 1GN. VAT Registration Number is 500 2481 05.

See all our properties at www.connells.co.uk | www.rightmove.co.uk | www.zoopla.co.uk

Property Ref: SSR312639 - 0003