



Acton Lane, W4
£565,000

Dexters



Acton Lane, W4

A bright two-bedroom split-level maisonette set over the upper floors of a period conversion in central Chiswick. Arranged across two floors, it offers a spacious, house like layout with a generous reception room and eat-in kitchen. Both bedrooms are doubles, with two bathrooms. Filled with natural light and period charm. Share of freehold and No onward chain this must be viewed.

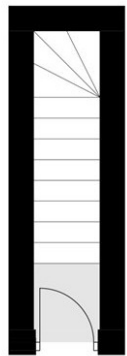
Perfectly positioned just moments from Turnham Green and Chiswick Park Underground stations (District Line), as well as South Acton Overground, the property offers excellent connectivity across London. The vibrant mix of cafés, restaurants, and boutique shops along Chiswick High Road and Turnham Green Terrace are all within easy walking distance, making this an exceptional location for both lifestyle and convenience.

Features

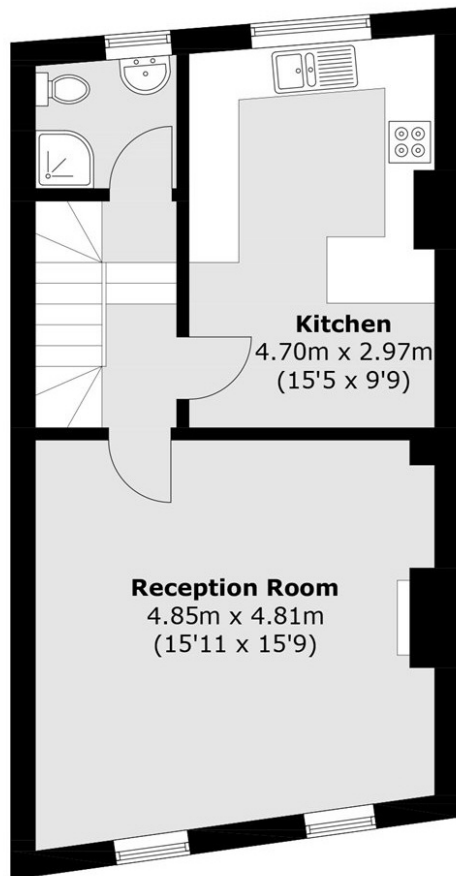
- Share of Freehold
- No Onward Chain
- Split Level Maisonette
- Separate Kitchen
- Two Double Bedrooms
- Two Bathrooms



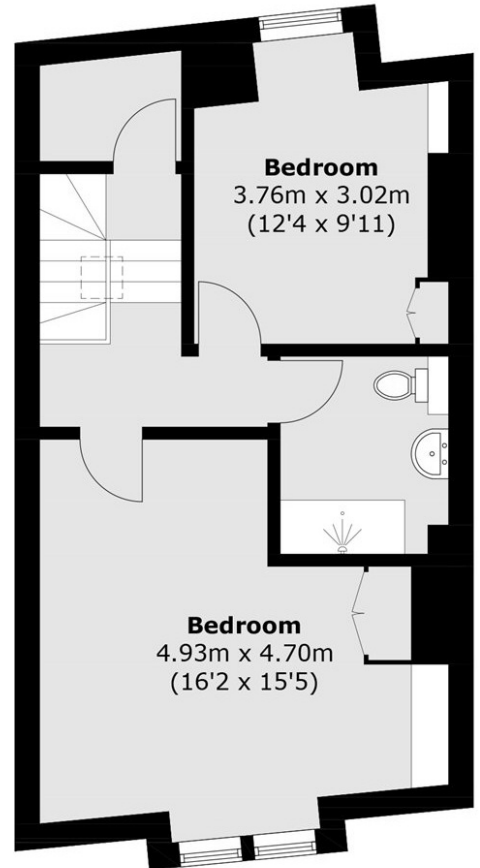
Acton Lane,
London, W4



Ground Floor



First Floor



Second Floor

Total area (approx.): 92.9 sq. m (1,000.0 sq. ft)