



## Alfred Road, W2

£370,000

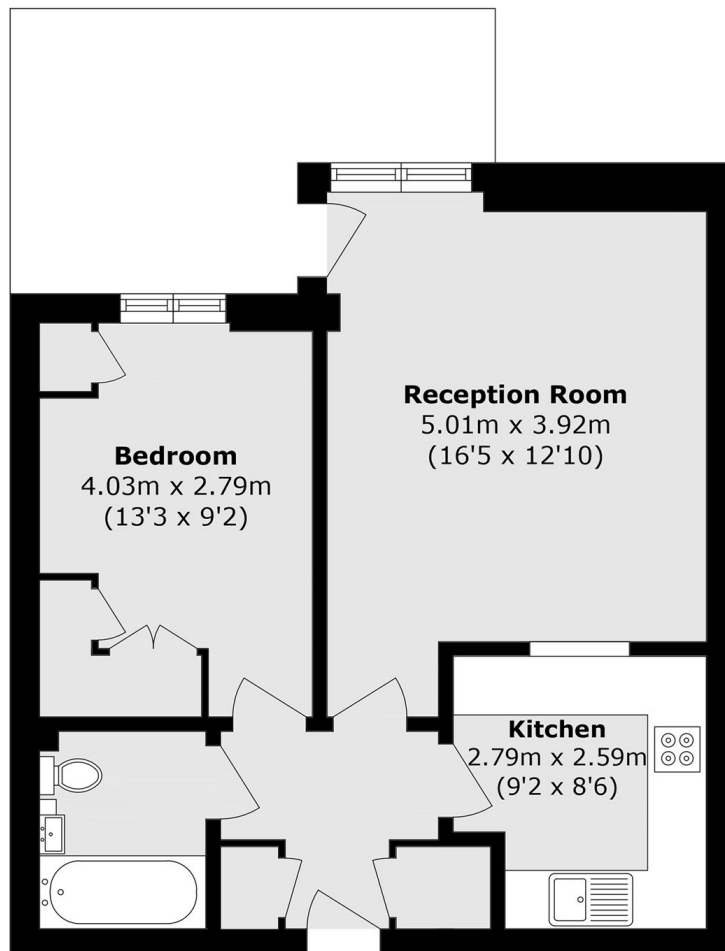
A well-proportioned, one bedroom apartment located on the raised ground floor of a modern building. The property is well-presented with a spacious reception room leading out onto a demised patio, a modern well-fitted kitchen and underground parking spaces, subject to availability.

Langley house is located by the Grand Union Canal known for its picturesque walks. The amenities of Westbourne Grove, Paddington and Maida Vale are nearby and the area is served by Royal Oak and Westbourne Park Stations.

### Features

- Double Bedroom
- Spacious Reception
- Separate Kitchen
- Private Patio
- Grand Union Canal
- Paddington

# Alfred Road, London, W2



## Ground Floor

Total area (approx.): 47.8 sq. m (514.5 sq. ft)