



City Road, London EC1V

Guide price £500,000 Leasehold



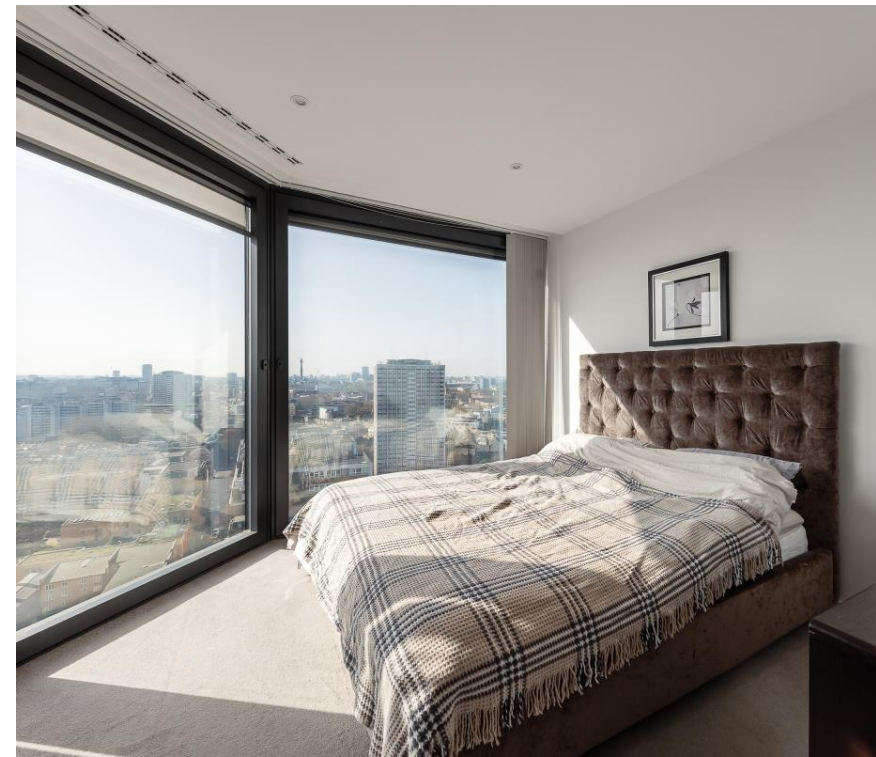


Description

Located on the 22nd floor, this luxury apartment offers approximately 565 sq ft (52.5 sq m) of thoughtfully designed living space with an innovative triangular floor plan that maximizes views and natural light.

Floor-to-ceiling windows wrap around the exterior, providing breathtaking panoramic views of London's cityscape. The open-concept living area seamlessly integrates the reception room and kitchen with built-in cabinetry and premium finishes. The generously proportioned principal bedroom features expansive windows and is complemented by the elegant recessed lighting, with direct access to a stylish modern bathroom. The apartment benefits from a beautiful waterfront location, adjacent to the canal, offering unparalleled urban views while maintaining a sense of tranquillity in this vibrant London neighbourhood.

Chronicle Tower is located close to the amenities of Old Street and Angel with excellent travel links, the development is also close to the Regents Canal in the City.



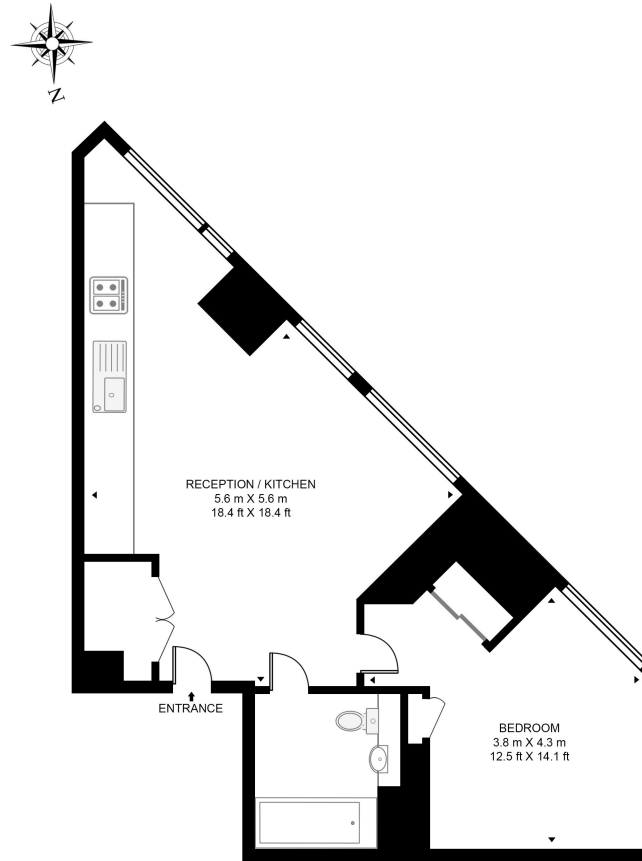
- Iconic curved glass tower architecture
- 22nd floor waterfront location
- Floor-to-ceiling windows with panoramic cityscape views
- 565 sq ft (52.5 sq m) triangular floor plan
- Open-concept reception/kitchen area (18.4ft x 18.4ft)

- Modern bathroom with premium fixtures
- Prime City Road Basin setting with canal views
- Angel Station (0.5m) Northern Line
- Old Street Station (0.6m) Northern Line
- Council tax: Band E

Floorplan

565 sq ft | 53 sq m

CHRONICLE TOWER, CITY ROAD
APPROXIMATE GROSS INTERNAL FLOOR AREA 565 SQ.FT (52.5 SQ.M)



TWENTY SECOND FLOOR



This floor plan has been defined by the RICS Code of Measurement. This floor plan and all others are for approximate representative purposes only and upon usage is agreed to as such by the client.
WWW: hdvirtualart.com | TEL: 0203.974.1567 | EMAIL: info@hdvirtualart.com

City
25 Walbrook The Walbrook
Building,
London EC4N 8AF
+4420 7337 4000

Urban living, your way.

jll.co.uk/residential

© 2019 Jones Lang LaSalle IP, Inc. All rights reserved. All information contained herein is from sources deemed reliable; however, no representation or warranty is made to the accuracy thereof.

