



**GASCOIGNE
HALMAN**

Tideswell, Buxton
Asking Price £220,000

THE AREA'S LEADING ESTATE AGENCY



A beautifully presented and attractive stone built cottage in a convenient location. This well appointed cottage offers modern fittings including a contemporary, fitted kitchen and bathroom accompanied by with two bedrooms and a lounge with bay window to the front. This quirky, yet cosy cottage also benefits from gas central heating, is fully double glazed and has a feature fireplace in the lounge.

The cottage has no outside space, and is accessed up a short driveway on foot from Queen Street. It is close to many of the local amenities including shops, cafes and public houses; making it a convenient and ideal retreat for any buyer. Access to the nearby countryside is also only a short walk away.

Property details

- Traditional Stone Built Cottage
- Convenient Location
- Two Bedrooms
- Attractive, Modern Kitchen and Bathroom
- Well Presented Throughout





DIRECTIONS

SK17 8JZ

COUNCIL TAX BAND

TENURE

Freehold

SERVICES (NOT TESTED)

Services have not been tested and you are advised to make your own enquiries and/or inspections.

LOCAL AUTHORITY

Derbyshire Dales District Council

VIEWING

Viewing strictly by appointment.

EFFICIENCY RATING

PRIMARY SOURCE OF HEATING

Gas fired hot water radiators

PRIMARY ARRANGEMENT FOR SEWERAGE

Mains Supply

PRIMARY SOURCE OF ELECTRICITY

Mains Supply

PRIMARY SOURCE OF WATER

Mains Supply

BROADBAND CONNECTION

Copper wire

ANY EASEMENTS, SERVITUDES OR WAYLEAVES?

No

ARE THERE ANY RESTRICTIONS ASSOCIATED WITH THE PROPERTY

No

THE EXISTENCE OF ANY PUBLIC OR PRIVATE RIGHT OF WAY?

Yes

SOURCES OF FLOODING

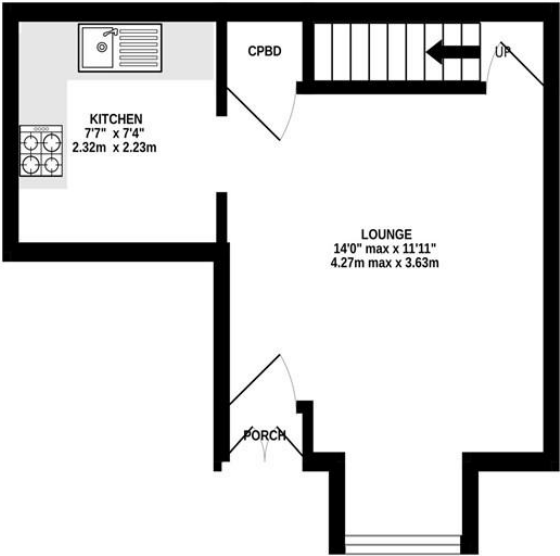
Ask Agent

HAS PROPERTY BEEN FLOODED IN 5 YEARS

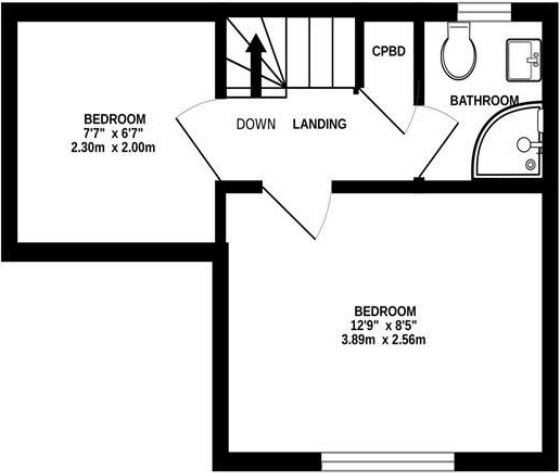
No

NOTICE Gascoigne Halman for themselves and for the vendors or lessors of this property whose agents they are give notice that: (i) the particulars are set out as a general outline only for the guidance of intending purchasers or lessees, and do not constitute, nor constitute part of, an offer or contract; (ii) all descriptions, dimensions, references to condition and necessary permissions for use and occupation, and other details are given in good faith and are believed to be correct but any intending purchasers or tenants should not rely on them as statements or representations of fact but must satisfy themselves by inspection or otherwise as to the correctness of each of them; (iii) no person in the employment of Gascoigne Halman has any authority to make or give any representation or warranty whatever in relation to this property.

GROUND FLOOR
231 sq.ft. (21.5 sq.m.) approx.



1ST FLOOR
219 sq.ft. (20.3 sq.m.) approx.



TOTAL FLOOR AREA : 450 sq.ft. (41.8 sq.m.) approx.
Measurements are approximate. Not to scale. Illustrative purposes only
Made with Metropix ©2026



THE AREA'S LEADING ESTATE AGENCY

01298 813577 chapel@gascoignehalman.co.uk
27 Market Street, Chapel-En-Le-Frith, High Peak, SK23 0HP