



Gloucester Place, W1U

£4,116 Per calendar month

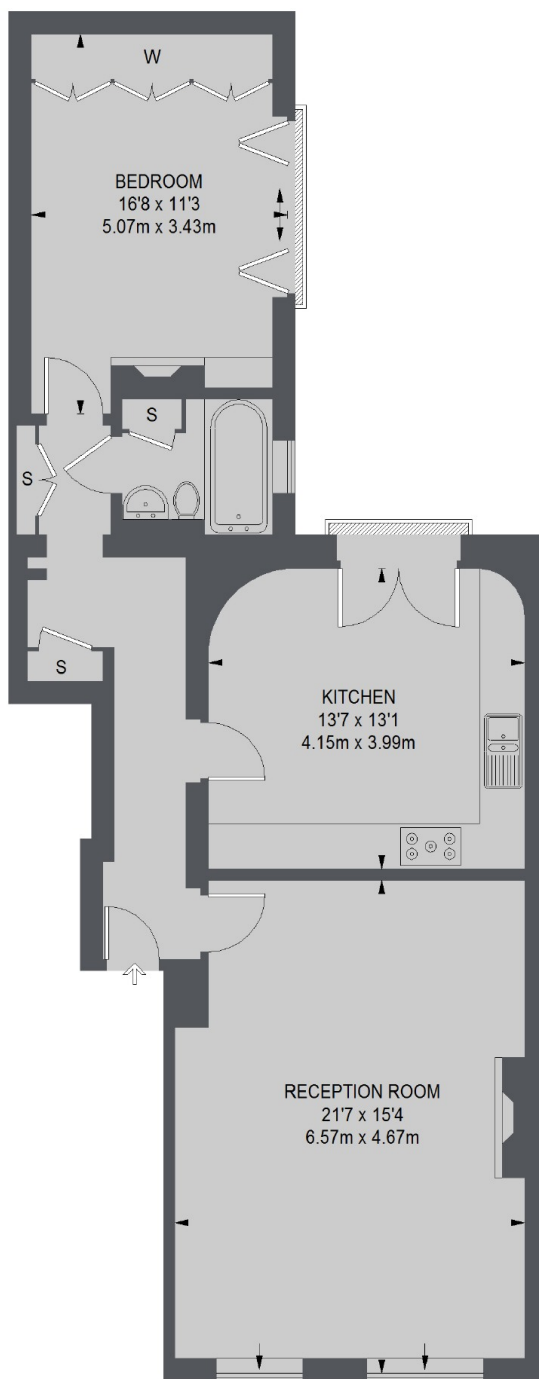
A one bedroom apartment on the ground floor of a Georgian conversion on Gloucester Place. The property has a large reception room with wood flooring, separate kitchen, a double bedroom with built-in storage and bathroom.

Gloucester Place is a block away from the shops, bars and restaurants of Baker Street and moments from the open spaces of Regent's Park. There are numerous transport links from Baker Street and Marylebone stations.

Features

- Ground Floor Apartment
- One Double Bedroom
- Large Reception
- Separate Kitchen
- Unfurnished
- The Portman Estate

Gloucester Place, London, W1U



RAISED GROUND FLOOR

TOTAL APPROX FLOOR AREA
343 SQ. FT. (7853 SQ. M)