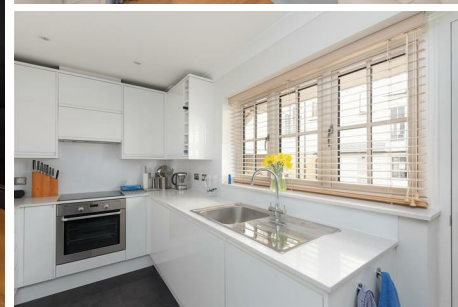


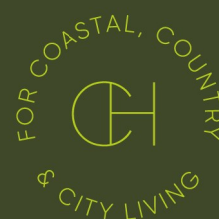
CHRISTOPHER HODGSON



**Whitstable**

Guide Price **£500,000**

Freehold



# Whitstable

## 2 The Slipway, Sea Wall, Whitstable, Kent, CT5 1BY

An exciting opportunity to acquire a three storey detached house enjoying a secure and secluded position in the heart of Whitstable, moments from Whitstable's charming pebble beach, where a short and pleasant stroll will take you to the famous working harbour, The Horsebridge Arts and Community Centre, and Harbour Street with its array of independent shops and highly regarded restaurants. Whitstable Station (0.6 miles).

The bright, spacious and smartly presented accommodation is arranged on the ground floor to provide an entrance hall with under stair storage cupboard and cloakroom, a generous sitting room with partially vaulted ceiling open plan to the dining area, and a recently fitted contemporary kitchen.

To the first floor there are two bedrooms and a bathroom, and the second floor is occupied by the principal bedroom with en-suite shower room.

Outside, there is a small seating area, a secure allocated parking space accessed via a CCTV-monitored electronically operated gate from Terrys Lane, and a charging point for an electric vehicle. The property also benefits from smart controlled central heating and its own CCTV. No onward chain.



### LOCATION

The Slipway is a desirable location in Whitstable, conveniently positioned moments from the beach and town centre. Whitstable itself is a charming town by the sea with its working harbour and colourful streets of fisherman's cottages. The bustling High Street offers a diverse range of independent boutique shops, café bars and popular restaurants specialising in local seafood. The mainline railway station at Whitstable provides frequent services to London, (Victoria) approximately 80 minutes. The high speed Javelin service provides access to London (St Pancras) with a journey time of approximately 73 minutes. The A299 is accessible providing a dual carriageway link to the M2/A2 giving access to the channel ports and connecting motorway network.

### ACCOMMODATION

The accommodation and approximate measurements (taken at maximum points) are:

#### GROUND FLOOR

- Entrance Hall 9'6" x 7'4" (2.90m x 2.25m)
- Sitting Room 14'11" x 11'1" (4.55m x 3.38m)
- Dining Area 8'7" x 7'6" (2.64m x 2.29m)
- Kitchen 13'1" x 7'6" (3.99m x 2.29m)

- Cloakroom 5'2" x 2'11" (1.60m x 0.89m)

#### FIRST FLOOR

- Bedroom 2 11'1" x 8'5" (3.39m x 2.59m)
- Bedroom 3 10'7" x 6'2" (3.25m x 1.88m)
- Bathroom 7'4" x 6'2" (2.26m x 1.88m)

#### SECOND FLOOR

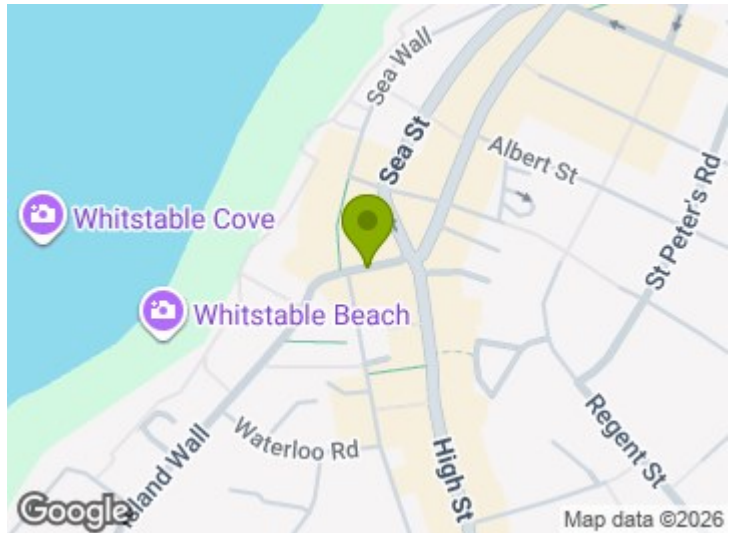
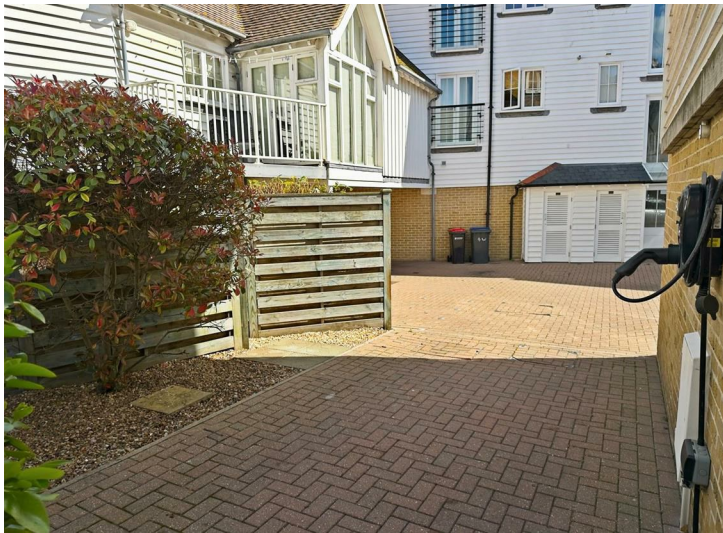
- Bedroom 1 11'5" x 10'2" (3.48m x 3.11m)
- En-Suite Shower Room

#### Parking

One allocated parking space accessed via electronically operated gates from Terrys Lane.

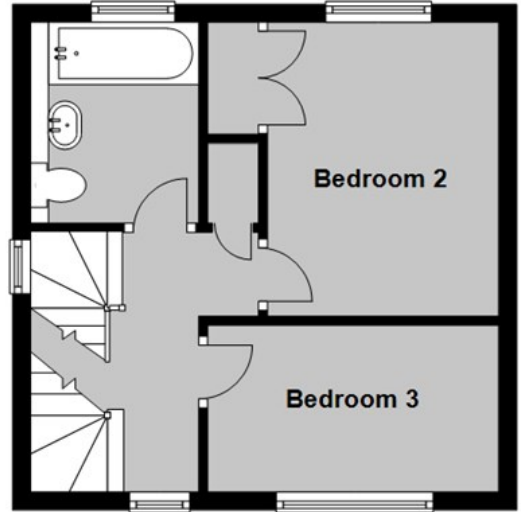
#### Service/Maintenance Charge

A service/maintenance charge is payable in the sum of approximately £408.00 every 6 months for the upkeep of the parking court and electronically operated gates (to be confirmed by vendor's solicitors).



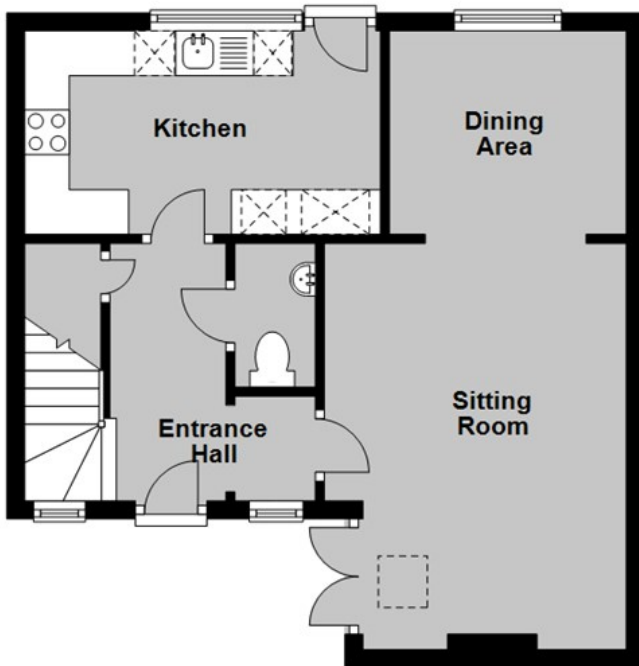
## First Floor

Approx. 27.8 sq. metres (299.6 sq. feet)



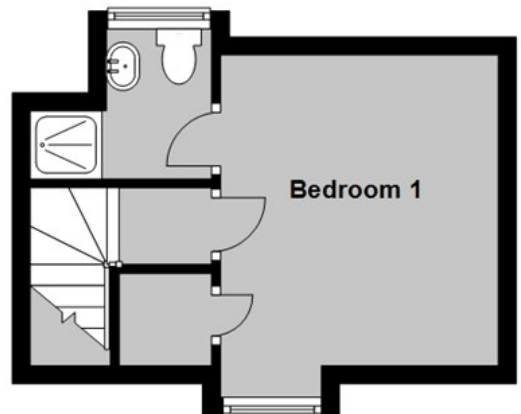
## Ground Floor

Approx. 40.3 sq. metres (434.1 sq. feet)



## Second Floor

Approx. 18.5 sq. metres (198.7 sq. feet)



Total area: approx. 86.6 sq. metres (932.4 sq. feet)

**Council Tax Band E. The amount payable under tax band E for the year 2025/2026 is £2,815.08.**

Christopher Hodgson Estate Agents for itself and as for the vendor or lessor (as appropriate) gives notice that: 1 These particulars are only a general outline for the guidance of intending purchasers or lessees and do not constitute in whole or in part an offer or a Contract. 2 Reasonable endeavours have been made to ensure that the information given in these particulars is materially correct but any intending purchaser or lessee should satisfy themselves by inspection, searches, enquiries and survey as to the correctness of each statement. 3 All statements in these particulars are made without responsibility on the part of Christopher Hodgson Estate Agents or the vendor or lessor. 4 No statement in these particulars is to be relied upon as a statement or representation of fact. 5 Neither Christopher Hodgson Estate Agents nor anyone in its employment or acting on its behalf has authority to make any representation or warranty in relation to this property. 6 Nothing in these particulars shall be deemed to be a statement that the property is in good repair or condition or otherwise nor that any services or facilities are in good working order. 7 Photographs may show only certain parts and aspects of the property at the time when the photographs were taken and you should rely upon actual inspection. 8 No assumption should be made in respect of parts of the property not shown in photographs. 9 Any areas, measurements or distances are only approximate. 10 Any reference to alterations or use is not intended to be a statement that any necessary planning, building regulation, listed building or any other consent has been obtained. 11 Amounts quoted are exclusive of VAT if applicable. 12 Whilst reasonable endeavours have been made to ensure the accuracy of any floor plan contained in these particulars, all measurements and areas are approximate and no responsibility is taken for any error, omission or mis-statement. This plan is for illustrative purposes only and should be used as such by any prospective purchaser. 13 Any mapping contained within these particulars is for illustrative purposes only and should be used as such by any prospective purchaser. No responsibility is taken for any error, omission or mis-statement. 14 Any computer generated images contained within these particulars are for illustrative purposes only and should be used as such by any prospective purchaser.

| Energy Efficiency Rating                    |   | Current | Target             |
|---|---|---------|--------------------|
| Very Energy Efficient (Green rating scale)  | A |         |                    |
| Energy Efficient (Light green rating scale) | B |         |                    |
| Decent (Yellow rating scale)                | C |         |                    |
| Needs Improvement (Orange rating scale)     | D |         |                    |
| Needs Improvement (Red rating scale)        | E |         |                    |
| Very Poor (Dark red rating scale)           | F |         |                    |
| Very Poor (Darkest red rating scale)        | G |         |                    |
| Minimum Energy Efficient (Lightest green)   |   | 72      | 84                 |
| England & Wales                             |   | ED      | December 2020/2021 |

95-97 TANKERTON ROAD, WHITSTABLE CT5 2AJ | CHRISTOPHERHODGSON.CO.UK

