



OVER 60?

Secure this property
for up to **59% less!**

Price

£295,000

Freehold

3x  1x  1x 

Beaconsfield Road, Chatham, Kent, ME4

Wards
Helping you move forwards



Main features

- Beautifully presented semi-detached bungalow with large balcony
- Converted basement with kitchen
- Unique and versatile layout
- Ideal purchase for a first time buyer or someone looking to downsize
- Great location due to being within close proximity to good schools, local amenities and transport links

Accommodation

SPLIT LEVEL GROUND FLOOR

Entrance Hall

Lounge: 17'3 x 9'7 (5.26m x 2.92m)

Bedroom 3 / Snug: 9'10 x 8'8 (3.00m x 2.64m)

Bedroom 1: 12'3 x 11'1 (3.74m x 3.38m)

Bedroom 2: 12'5 x 8'11 (3.79m x 2.72m)

Bathroom: 7'9 x 5'10 (2.36m x 1.78m)

Study: 9'11 x 5'4 (3.02m x 1.63m)

LOWER GROUND FLOOR

Kitchen/Diner: 25'4 x 9'2 (7.73m x 2.80m)

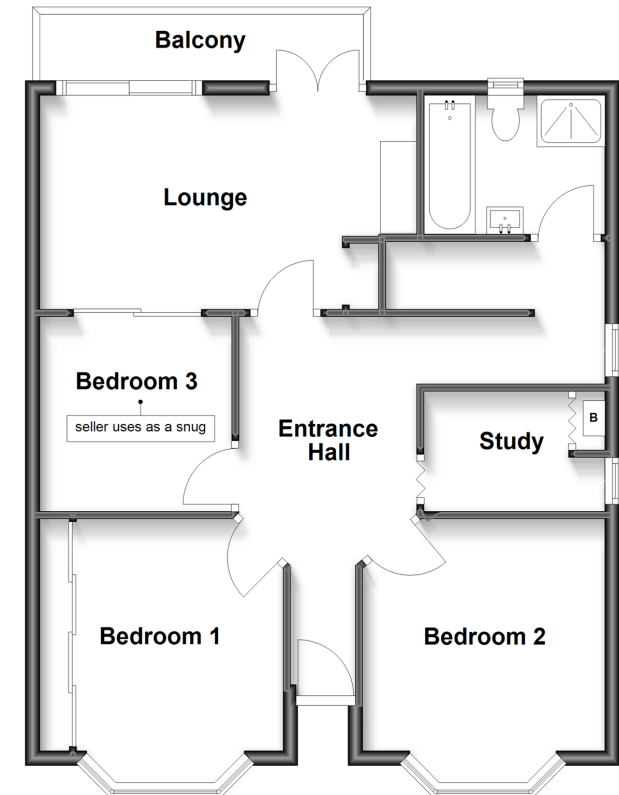
OUTSIDE

Front Rear

Rear Garden

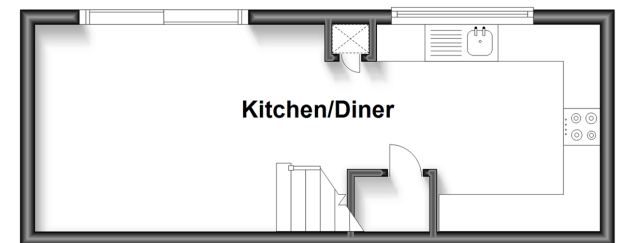
Split Level Ground Floor

Approx. 68.5 sq. metres (737.2 sq. feet)



Lower Ground Floor

Approx. 21.7 sq. metres (233.8 sq. feet)



Call Chatham - 01634 841243 ■ wardsofkent.co.uk

- Legal advice should be taken to verify fixtures/fittings, planning, alterations and/or lease details
- Appliances & services are untested, dimensions are approximate and floor plans are not to scale
- Through a Homewise Home For Life Plan people aged 60+ can secure this property for up to 59% less, by purchasing a Lifetime Lease.



10435743/20250708/RC/RC