



JON-PAUL BRAMPTON POWERED BY **exp** TM UK

@jon-paul.brampton@exp.uk.com

🌐 jonpaulbrampton.exp.uk.com

☎ 07359 015 020

# Denmark Place, Akeman Street, Tring

Guide Price £545,000

🛏️ 2 🚿 2 🚗 1



- Gated development
- Two allocated off street parking spaces
- Two bathrooms
- EV Charger
- No chain
- Central Tring location
- Two double bedrooms
- Open plan living
- Lock up and leave
- Watch the video tour !



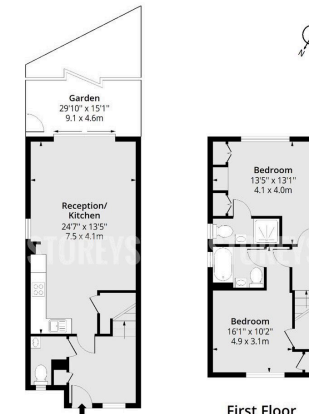


JP presents...A stunning newly built two-bedroom semi-detached home, tucked away within an exclusive gated development in the heart of Tring

## Denmark Place HP23

Approx. Gross Internal Area 836 Sq Ft - 77.66 Sq M

STOREYS



### Ground Floor

Floor Area 439 Sq Ft - 40.78 Sq M

### First Floor

Floor Area 397 Sq Ft - 36.88 Sq M



Measurements according to BS 5393. Floor plan is for illustrative purposes only and is not to scale. Every attempt has been made to ensure the accuracy of the floor plan shown. However, all measurements, figures, fittings and data shown are an approximate interpretation for illustrative purposes only. 1 sq. m = 10.76 sq. ft. Date: 16/02/2024

lppplus.com

Date: 16/02/2024

Energy performance certificate (EPC)		
37 Denmark Place TRING HP23 5QE	Energy rating <b>B</b>	Valid until: 8 April 2034
Property type	Semi-detached house	Certificate number: 6334-6134-3000-0311-7292
Total floor area	78 square metres	
<b>Rules on letting this property</b>		
Properties can be let if they have an energy rating from A to E.		
You can read guidance for landlords on the regulations and exemptions <a href="https://www.gov.uk/guidance/domestic-private-rented-property-landlords-energy-efficiency-standards-landlord-guidance">https://www.gov.uk/guidance/domestic-private-rented-property-landlords-energy-efficiency-standards-landlord-guidance</a>		