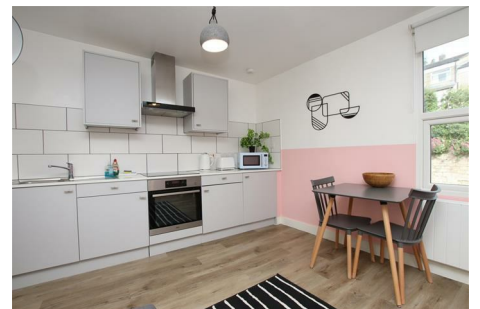
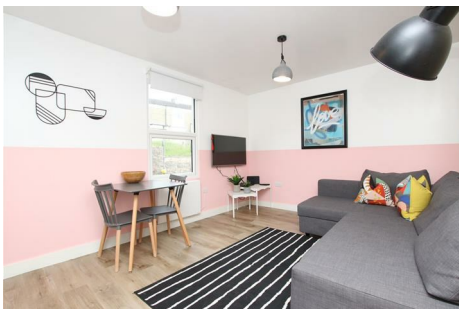




ASPIRE

— TO MOVE —



Claremont Terrace, Bath, BA1

Video and physical viewings available. One bedroom maisonette located on the popular Camden Road, Bath. The flat is offered fully furnished has stunning viewings and a private garden to the rear. Available from the 7th August.

Claremont Terrace is located on Camden Road. Camden Road offers great access into Bath city centre with a bus stop almost outside. There are local amenities including a top rated barber, two pubs, pharmacy, Fairfield Park health centre and a convenience store. The popular area of Larkhall is just 0.8 miles away.

£1,450 PCM

Claremont Terrace, Bath, BA1

- One bedroom maisonette
- Holding deposit: £334
- Furnished
- Private garden
- Popular location
- Council tax band A
- Available 7th August
- Stylish design
- Video viewing available

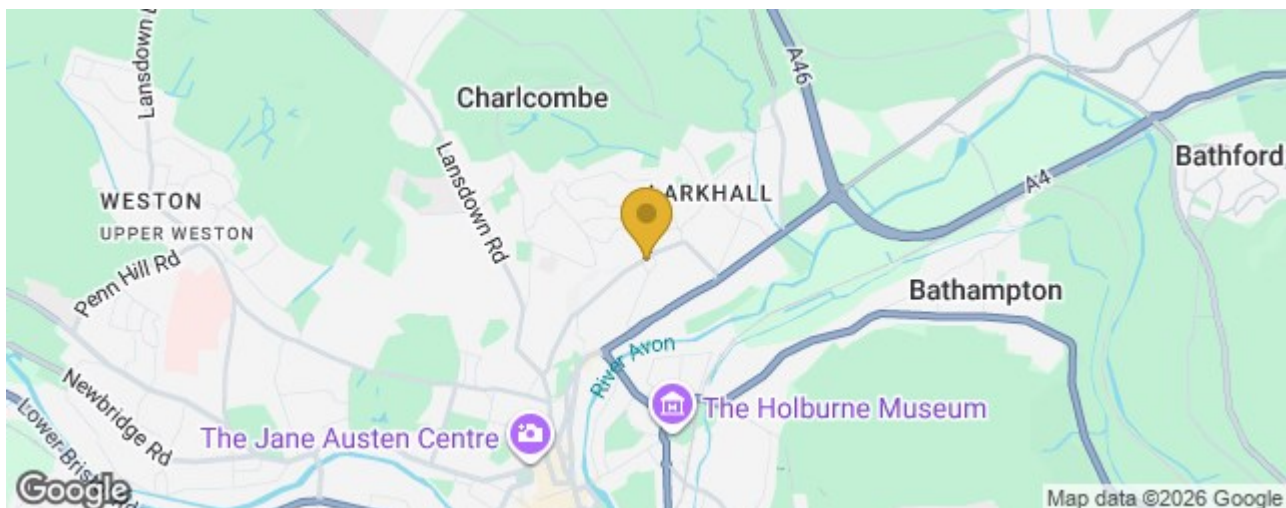
Video and physical viewings available. One bedroom maisonette located on the popular Camden Road, Bath. The flat is offered fully furnished has stunning viewings and a private garden to the rear. Available from the 7th August.

Claremont Terrace is located on Camden Road. Camden Road offers great access into Bath city centre with a bus stop almost outside. There are local amenities including a top rated barber, two pubs, pharmacy, Fairfield Park health centre and a convenience store. The popular area of Larkhall is just 0.8 miles away.

The property has it's own front door and comprises of entrance hall with storage for coats and shoes. On the first floor there is the open plan kitchen/living room with base and wall units. oven, hob, washer/dryer and fridge with freezer box. A sofa, coffee table and dining table with chairs are provided. The bedroom comes with double bed, bedside tables and hanging rail. A glazed door leads to a rear terrace and steps down to the rear/private graveled garden. The garden offers stunning views over bath and is south facing. The shower room is located on the half landing and has a large walking shower, WC and sink.

Available from the 7th August the property would best suit a single professional, couple or mature student.

Council tax band A: ££1,550.18



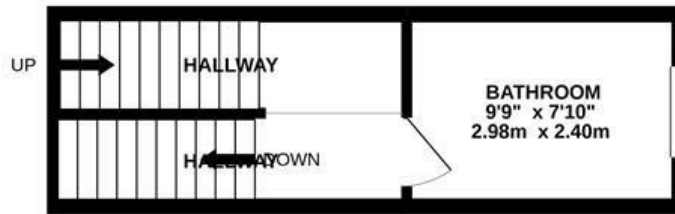


Floor Plan

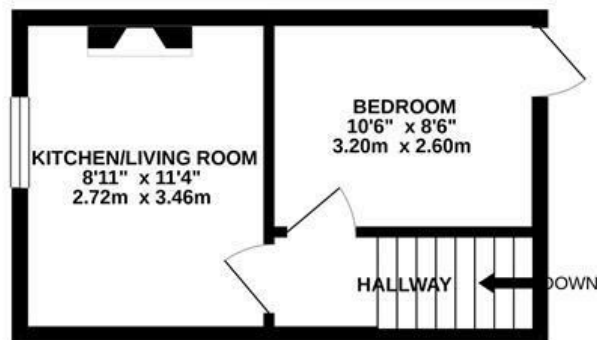
GROUND FLOOR
70 sq.ft. (6.5 sq.m.) approx.



1ST FLOOR
154 sq.ft. (14.3 sq.m.) approx.



2ND FLOOR
207 sq.ft. (19.3 sq.m.) approx.



CLAREMONT TERRACE, BATH, BA1

TOTAL FLOOR AREA : 432 sq.ft. (40.1 sq.m.) approx.

Whilst every attempt has been made to ensure the accuracy of the floorplan contained here, measurements of doors, windows, rooms and any other items are approximate and no responsibility is taken for any error, omission or mis-statement. This plan is for illustrative purposes only and should be used as such by any prospective purchaser. The services, systems and appliances shown have not been tested and no guarantee as to their operability or efficiency can be given.
Made with Metropix ©2020.

These particulars, whilst believed to be accurate are set out as a general outline only for guidance and do not constitute any part of an offer or contract. Intending purchasers should not rely on them as statements of representation of fact, but must satisfy themselves by inspection or otherwise as to their accuracy. No person in this firm's employment has the authority to make or give any representation or warranty in respect of the property.

