

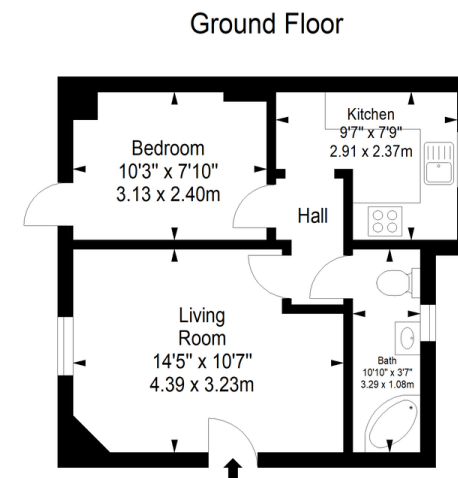


- ONE BEDROOM GROUND FLOOR GARDEN FLAT
- CLOSE TO WORTHING TOWN CENTRE AND SEA
 - PATIO GARDEN
- OFF ROAD PARKING

39a, Richmond Road, Worthing, BN11 1AN

Guide Price £140,000

We have a lovely one-bedroom ground floor property available for sale in Worthing Town Centre. Proximity to Worthing Train Station, Town Centre and Sea. This property which is share of freehold comes with off road parking for one car and a small patio area, perfect for investors or first-time buyers. Private entrance to patio area, flat door into reception room with a hatch leading down to a cellar with lots of storage. Hallway leading to bathroom with shower over bath, kitchen and bedroom. GCH and Double Glazed. To view call Tel: 01903 898000.



Approximate gross internal floor area 34.5 sq m/ 371.4 sq ft
 Whilst every care has been taken to ensure accuracy, dimensions are approximate and for illustrative purposes only.
 All rights reserved.



3 Marston Road, Worthing, West
 Sussex, BN14 8BD

www.w-welchestateagents.co.uk
 01903 898000
sales@w-welchestateagents.co.uk

Agents Note: Whilst every care has been taken to prepare these particulars, they are for guidance purposes only. All measurements are approximate and for general guidance purposes only and whilst every care has been taken to ensure their accuracy, they should not be relied upon and potential buyers/tenants are advised to recheck the measurements