



Plot 12 Kneeton Grove

, East Bridgford, NG13 8NY
£369,995

A stylish and thoughtfully designed three-bedroom home, The Foston is an attractive modern residence offering approximately 850 sq ft of well-planned accommodation, perfectly suited to first-time buyers, young families and those seeking a practical low-maintenance home. Built by Peveril Homes, Plot 12 combines bright, contemporary living spaces with a clever layout designed for modern everyday life.

The ground floor has been carefully arranged to maximise both space and functionality, featuring a fitted kitchen positioned to the front of the property with integrated appliances and practical workspace, ideal for everyday cooking. To the rear, the spacious open-plan lounge and dining area creates a superb social hub, offering ample space for relaxing and entertaining, with French doors opening onto the garden and allowing natural light to flood the room. A guest WC, useful storage cupboard and additional understairs storage complete the ground floor accommodation.

To the first floor, the principal bedroom offers a generous double bedroom retreat, while two further bedrooms provide flexible accommodation for children, guests or home working. All are served by a contemporary family bathroom, with additional storage positioned off the landing.

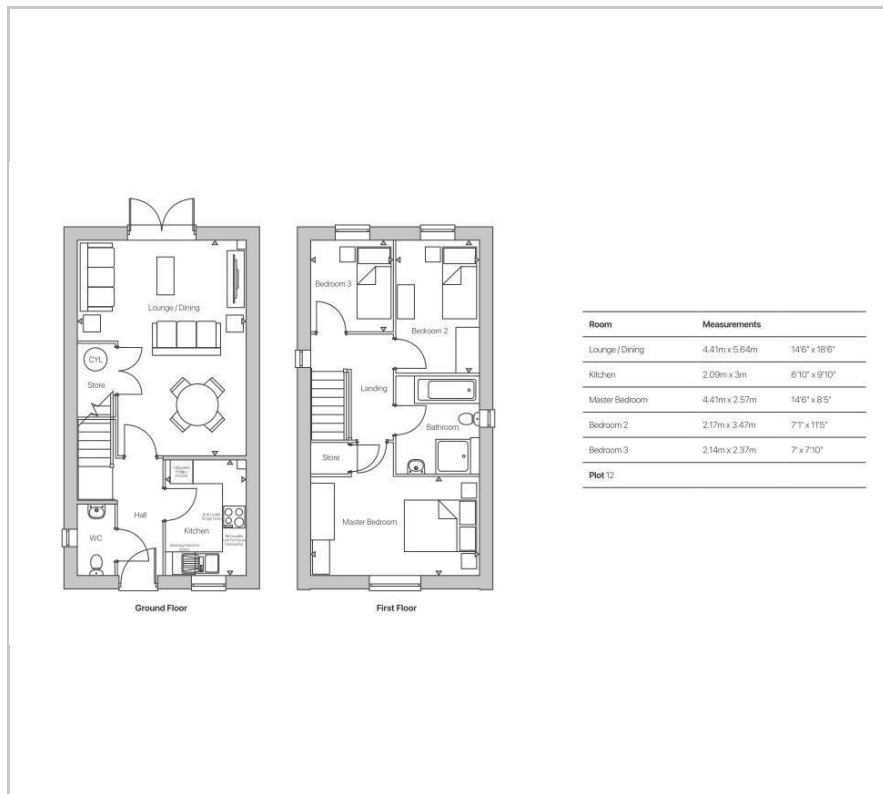
Viewing

Please contact our Berkley Leicester Office on 0116 2544755 if you wish to arrange a viewing appointment for this property or require further information.



3 1 1

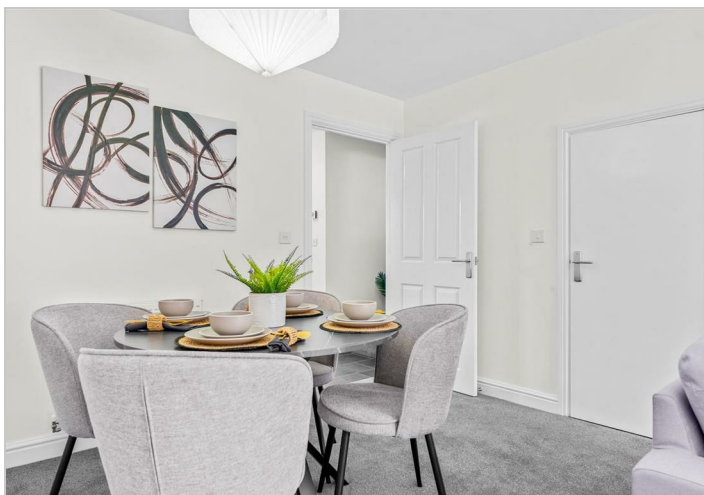
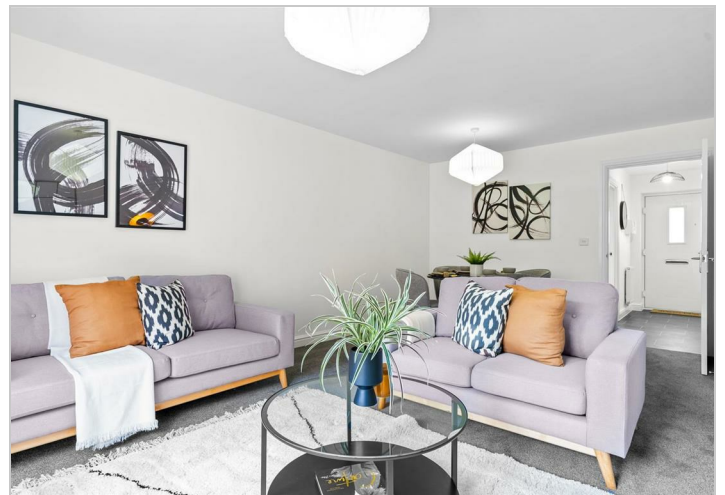
Floor Plan



Area Map



Energy Efficiency Graph



These particulars, whilst believed to be accurate are set out as a general outline only for guidance and do not constitute any part of an offer or contract. Intending purchasers should not rely on them as statements of representation of fact, but must satisfy themselves by inspection or otherwise as to their accuracy. No person in this firm's employment has the authority to make or give any representation or warranty in respect of the property.