

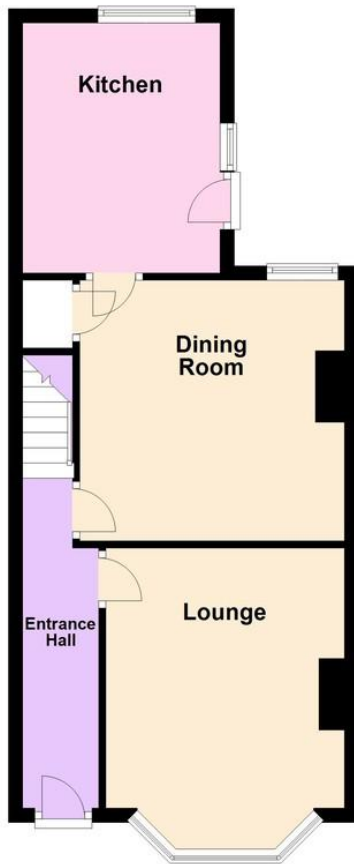


- Spacious Older Style House
- Angmering on Sea Location
- 2 Double Bedrooms
- 2 Reception Rooms
- Available Early June
- Gas Central Heating
- \*\* Library Photos \*\*
- Council Tax Band 'C'
- EPC Rating: - 'D'

43 Manor Road, East Preston BN16 1QA

**£1,550 pcm**

**Ground Floor**  
Approx. 43.6 sq. metres (469.6 sq. feet)



**First Floor**  
Approx. 43.5 sq. metres (468.1 sq. feet)



Total area: approx. 87.1 sq. metres (937.7 sq. feet)

An older style spacious mid terrace house pleasantly situated in Angmering on Sea. The house is available to let early June. Manor Road is located to the southern end of East Preston and runs between Sea Road and Seaview Avenue.

**ENTRANCE HALL**

**LOUNGE**

14' 1" x 11' (4.29m x 3.35m)

**DINING ROOM**

12' 1" x 12' (3.68m x 3.66m)

**KITCHEN**

11' 6" x 9' (3.51m x 2.74m)

**BEDROOM 1**

14' 4" x 12' (4.37m x 3.66m)

**BEDROOM 2**

11' 10" x 9' 5" (3.61m x 2.87m)

**BATHROOM/WC**

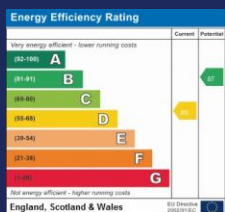
**ADDITIONAL SEPARATE WC**

**SMALL FRONT GARDEN**

**ENCLOSED REAR GARDEN**

**PARKING SPACE TO FRONT**

The information and measurements contained within these details are for guidance only and do not form part of any contract.



**90 THE STREET, RUSTINGTON, WEST SUSSEX, BN16 3NJ**

**lettings@hawkemetcalf.co.uk**

[www.hawkemetcalf.co.uk](http://www.hawkemetcalf.co.uk)

**01903 850450**