



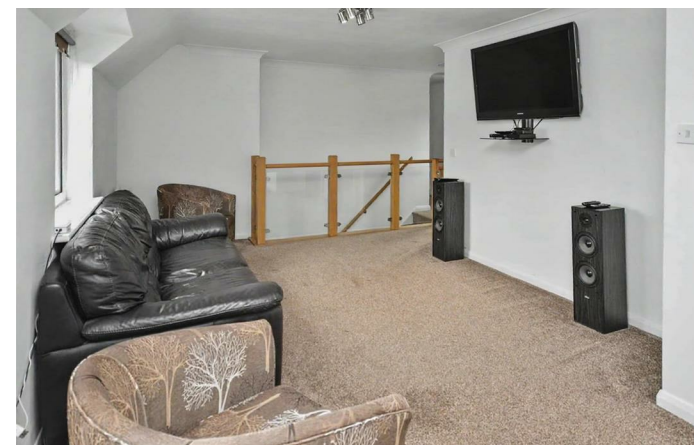
63 Rochester Road

Corby, Northamptonshire NN18 8PN



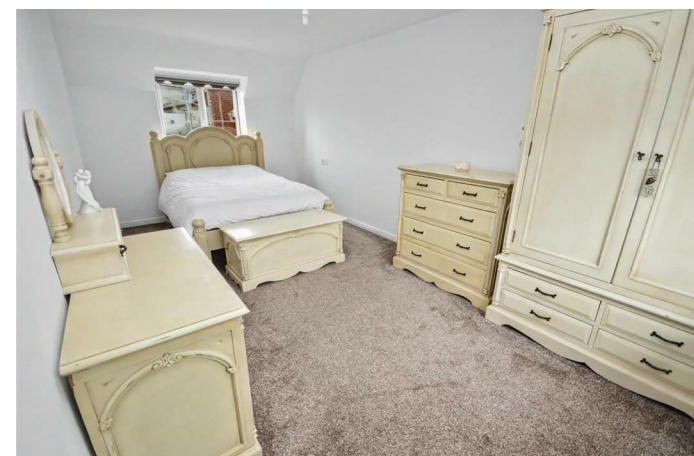
Simpson West

****AVAILABLE EARLY JULY**** Being situated within this sought after cul de sac on the ever popular Oakley Vale development this rarely available two double bed roomed coach house is presented in excellent condition throughout and offers features to include a 23' x 10'8 max lounge/dining room, fitted kitchen, superb bathroom, double glazing, gas radiator central heating, easy maintenance enclosed gardens with elevated decked patio and a driveway leading to a garage which offers convenient access from the hall and rear garden. Viewing is highly recommended. Energy Rating C. Council Tax Band B.

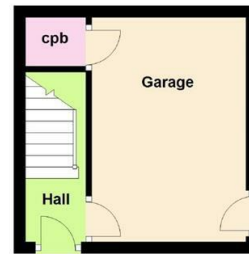


£950 PCM

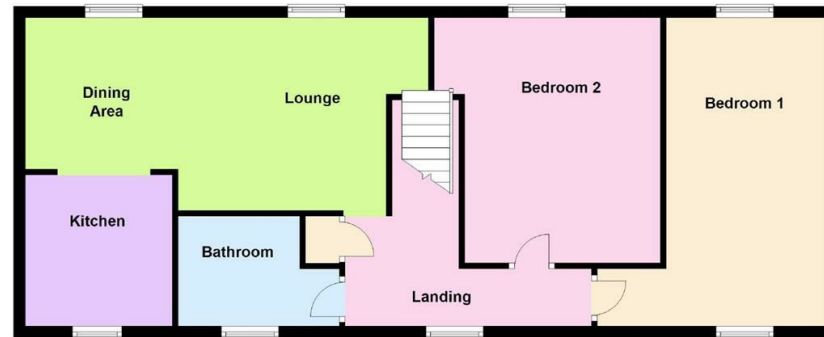
 2  1  1



Basement



First Floor



Floor plan not to scale - for guidance purposes only.
Plan produced using PlanUp.



Energy Efficiency Rating

	Current	Potential
<i>Very energy efficient - lower running costs</i>		
(92 plus) A		
(81-91) B		
(69-80) C		
(55-68) D	73	74
(39-54) E		
(21-38) F		
(1-20) G		
<i>Not energy efficient - higher running costs</i>		
England & Wales	EU Directive 2002/91/EC	



When you buy with Simpson West, you know **you'll be in safe hands**. From the moment you walk through our doors, we'll make you **feel truly welcome**. Our sales consultants and financial advisors will take you through **every step of the process**, offering **free expert advice** along the way, from help choosing the right mortgage and insurance through to finding your conveyancer. And if you need help selling your home too, **with over 20 years of local experience, you can trust us to get you moving**.



**Simpson
West**

Making Every
Journey Personal



01536 202007

info@simpsonwest.co.uk

<https://www.simpsonwest.co.uk/>

64 Corporation Street, Corby, Northants, NN17 1NH