



Northiam, N12

£6,000 Per calendar month

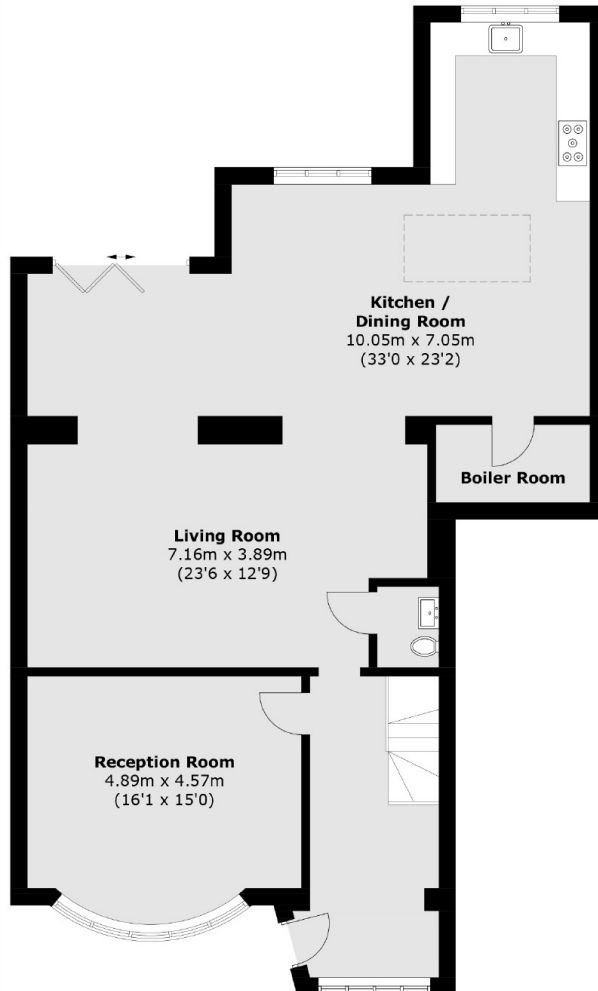
A modern five bedroom house, with a large reception, off street parking and modern kitchen and bathrooms. This property also has a guest WC and underfloor heating.

Located in central Woodside Park, moments from the Tube Station and all other local amenities

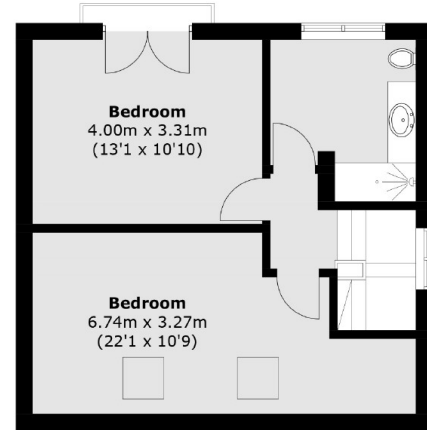
Features

- Five Bedrooms
- Two Receptions
- Two Bathrooms
- Off Street Parking
- Underfloor Heating
- Modern

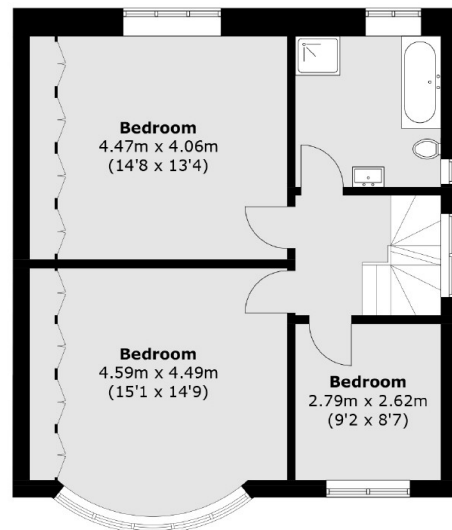
Northiam, London, N12



Ground Floor



Second Floor



First Floor

Total area (approx.): 222.1 sq. m (2,390.6 sq. ft)