



Valley Road

Cinderford, GL14 2NY

Auction Guide £199,000



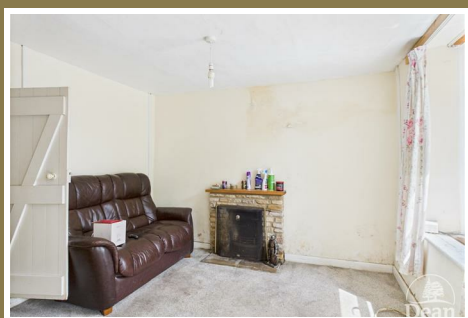
AUCTION HOUSE WALES OFFER FOR SALE A PAIR OF SEMI-DETACHED PROPERTIES STANDING IN A LARGE PLOT LOCATED IN AN INDUSTRIAL LOCATION.

ORIGINALLY ONE PROPERTY

AUCTION BIDDING OPENS 1PM 2nd MARCH AND CLOSES 3RD MARCH 1PM

VIEWINGS WILL BE CONDUCTED BY DEAN ESTATE AGENTS CINDERFORD BRANCH 01594 825574

THE PROPERTIES REQUIRE RENOVATING AND MODERNISING.



9 VALLEY ROAD :

Sitting Room :

Double glazed window to front, stone feature fireplace, latch door to staircase.

Sitting room :

Window to front, ceramic fireplace.

Kitchen/Diner :

Sink unit, stone fireplace, door to outside.

Inner Lobby :

Door to bathroom >

Bathroom :

Bath, wash hand basin, airing cupboard.

Separate WC :

window to side.

First Floor :

Bedroom 1 :

Double glazed window to front, over stairs cupboard, door to>

Bedroom 2 :

Window to side & rear, period fireplace.

Bedroom 3 :

Double glazed window to front.

Outside :

Lawned grounds, several outbuildings, attached storage shed.

11 VALLEY ROAD :

Kitchen :

Wall & base storage units, sink unit, electric cooker point, Worcester gas boiler, Plumbing for washing machine, radiator, beamed ceiling, recessed dresser unit, vinyl flooring.

Lounge :

Window to front, stone fireplace, wall lights, radiator, latch door to staircase.

Inner Hallway :

Latch door to bathroom.

Bathroom :

Bath with shower over, low level WC, wash hand basin, part tiled walls, electric heater, window to side.

First floor :

Bedroom 1 :

Two windows to front, radiator, built in over stairs cupboard.

Bedroom 2 :

Window to front, radiator, loft access.

Outside :

Lawned gardens, detached garage, attached outbuilding.



Dean Estate Agents Ltd have prepared the information within this website/brochure with infinite care and without a guarantee of accuracy. Before you act upon any information provided, we request that you satisfy yourself about the completeness, accuracy, reliability, suitability, or availability with respect to the website or the information, products, services, or related graphics contained on our website for any purpose.

These details do not constitute any part of any Offer, Contract or Tenancy Agreement. Photographs used for advertising purposes may not necessarily be the most recent photographs. All photographic images are under the ownership of Dean Estate Agents Ltd and therefore Dean Estate Agents retain the copyright.

Tenanted Property – we are not always able to show the most recent condition of a property due to tenants' privacy and may choose to show the photographs of the property when it was last vacant to at least allow clients some idea of the internal condition at that time.

Energy Performance Certificates are supplied to us via a third party and we do not accept responsibility for the content within such reports.

As with leasehold property or new build development sites, you are likely to be responsible for a contribution to management charges and/or ground rent or a contribution to the development service charge. Please enquire at the time of viewing. You may also incur fees for items such as leasehold packs and, in addition, you will also need to check the remaining length of any lease before you complete a mortgage application form. You must therefore consult with your legal representatives on these matters at the earliest opportunity before making a decision to purchase or incurring costs.

Measurements: Great care is taken when measuring, but measurements should not be relied upon for ordering carpets, equipment etc.

The Laws of copyright protect this material. Dean Estate Agents is the owner of the copyright. This property sheet forms part of our database and is protected by the database right and copyright laws.

Equipment: Dean Estate Agents have not tested the equipment or any central heating system mentioned in these particulars and the purchaser is advised to satisfy themselves as to the

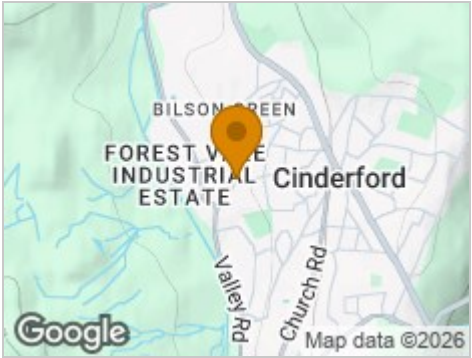
Road Map



Hybrid Map



Terrain Map



Floor Plan

Floor 0

Floor 1

Approximate total area⁽¹⁾
745 ft²
69.3 m²

(1) Excluding balconies and terraces

Calculations reference the RICS IPMS 3C standard. Measurements are approximate and not to scale. This floor plan is intended for illustration only.

GIRAFFE360

Viewing

Please contact our Cinderford Office on 01594 825574 if you wish to arrange a viewing appointment for this property or require further information.

Energy Efficiency Graph



These particulars, whilst believed to be accurate are set out as a general outline only for guidance and do not constitute any part of an offer or contract. Intending purchasers should not rely on them as statements of representation of fact, but must satisfy themselves by inspection or otherwise as to their accuracy. No person in this firms employment has the authority to make or give any representation or warranty in respect of the property.

