

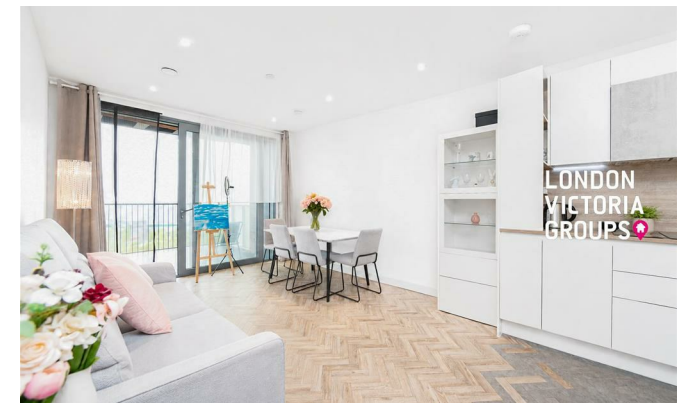
**LONDON
VICTORIA
GROUPS** 



**LONDON
VICTORIA
GROUPS** 



**LONDON
VICTORIA
GROUPS** 



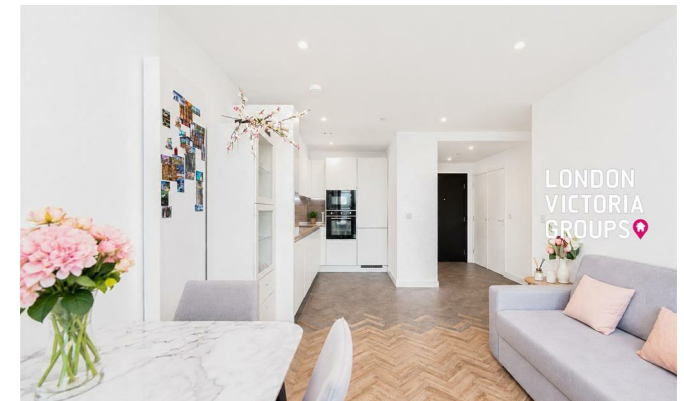
**LONDON
VICTORIA
GROUPS** 

Skyline Apartments, 11 Makers Yard

, London E3 3YP

- Two-bedroom, two-bathroom apartment
- Secure entry system
- Well-maintained communal areas
- EPC-B
- Open-plan living, dining, and kitchen area
- Lift access
- Bromley-by-Bow Station – District & Hammersmith & City Lines
- CTB-E

£2,950 Per Month



**LONDON
VICTORIA
GROUPS** 

Local Authority **Tower Hamlets**
Council Tax Band **E**
EPC Rating **B**



London Office Office

Spaces Victoria, 25 Wilton Road, Pimlico,
London, SW1V 1LW

Contact

020 3084 3094
XL@londonvictoriagroups.co.uk
www.londonvictoriagroups.co.uk

Agents Note: Whilst every care has been taken to prepare these particulars, they are for guidance purposes only. All measurements are approximate and for general guidance purposes only and whilst every care has been taken to ensure accuracy, they should not be relied upon and potential buyers/tenants are advised to recheck the measurements.