

Flemm homes

Join us on Saturday
between 10am and 1pm
mulled wine and ex

£445,000
Barby Road
Kilsby, CV23 8XD

PROPERTY SUMMARY

A boutique development by Flemming Homes of just four beautifully crafted 'eco' stone houses, positioned on the peaceful western fringe of the ever-popular village of Kilsby. Offering the perfect blend of village charm and modern living, these thoughtfully designed homes provide an exceptional standard of accommodation in a highly desirable location.

Kilsby is a thriving village community with two public houses, a well-regarded primary school and a community-run village shop for everyday essentials. The village is also steeped in history, with traditional architecture and an attractive conservation area adding to its appeal.

The nearby town of Rugby provides excellent transport links, including direct rail services to London Euston in approximately 50-60 minutes, making this development ideal for commuters. Rugby also offers a wide range of shops, leisure facilities and schooling

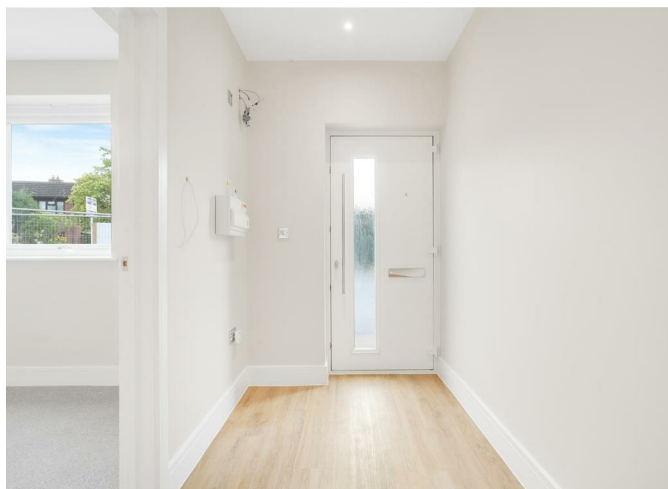
3



3



1



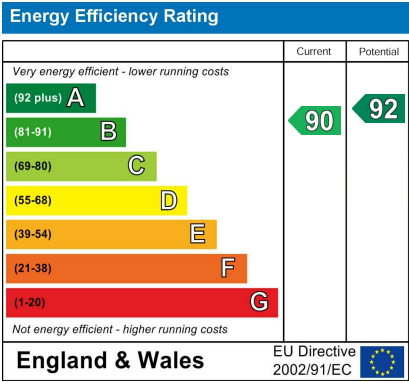




3

3

1



Agents Note: Whilst every care has been taken to prepare these particulars, they are for guidance purposes only. All measurements are approximate and are for general guidance purposes only and whilst every care has been taken to ensure their accuracy, they should not be relied upon and potential buyers/tenants are advised to recheck the measurements

OFFICE ADDRESS
 8a Regent Street
 Leamington Spa
 Warwickshire
 CV32 5HO

OFFICE DETAILS
 01926 354 400
leamington@handlesproperty.co.uk