



BURNBURY ROAD, SW12

£775,000

- Victorian Maisonette
- Two Double Bedrooms
- Immaculate Condition
- Share of Freehold
- Private Garden
- Energy Rating: C





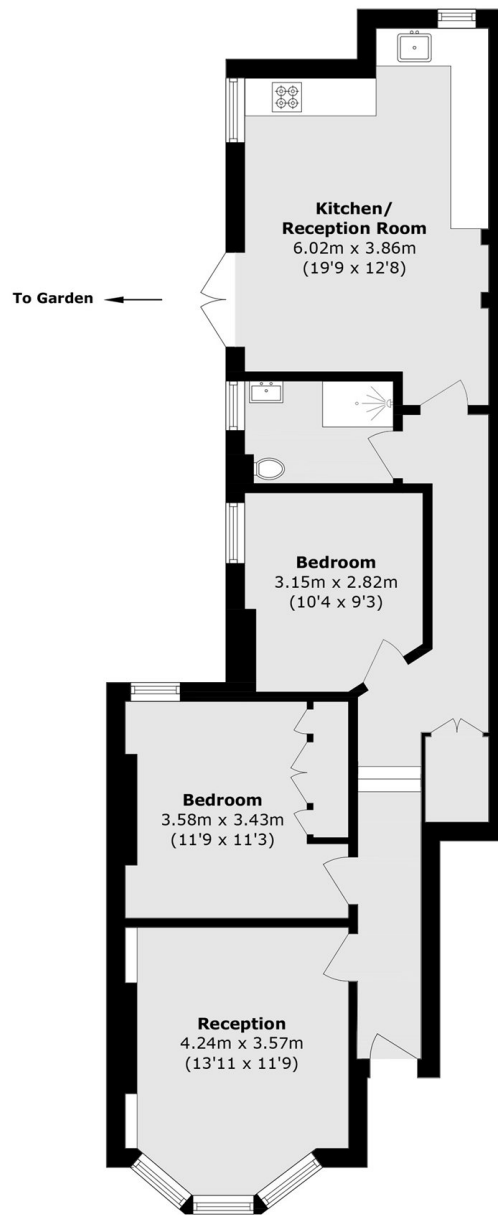
## ABOUT THE HOME

A stunning two bedroom ground floor Victorian maisonette with private garden located highly regarded Hyde Farm Estate of Balham. The property has been finished to a very high standard throughout including a high spec kitchen diner with integrated appliances, The property is sold with a share of the freehold and no onward chain.

Burnbury Road is situated within the Hyde Farm area within close proximity to Balham and just moments from the green spaces of Tooting Bec Common. It is well located for easy access to Balham underground and mainline stations as well as all of the shops, bars, restaurants and supermarkets on offer locally.







Total area (approx.): 74.4 sq. m (800.8 sq. ft)

### JACKSONS BALHAM

8-11 Balham Station Road,  
London, SW12 9SG  
Sales: 020 8675 6555  
Lettings: 020 8675 6565

Energy Rating: We aim to make our particulars both accurate and reliable. However they are not guaranteed; nor do they form part of an offer or contract. If you require clarification on any points then please contact us, especially if you're traveling some distance to view. Please note that appliances and heating systems have not been tested and therefore no warranties can be given as to their good working order.