



**Guide Price**  
**£110,000**

**Leasehold**

1x  1x  1x 

**Oxford House, Barfield,  
Ryde, Isle of Wight,  
PO33**

**OVER 60?**

Secure this property  
for up to **59% less!**

**Pittis**   
Helping you move forwards



## Main features

- A charming first floor apartment
- Available with the remainder of a 999 year lease
- Proven rental track record of achieving £625pcm
- Set a short stroll to local shops and beaches
- Perfect first home or investment property

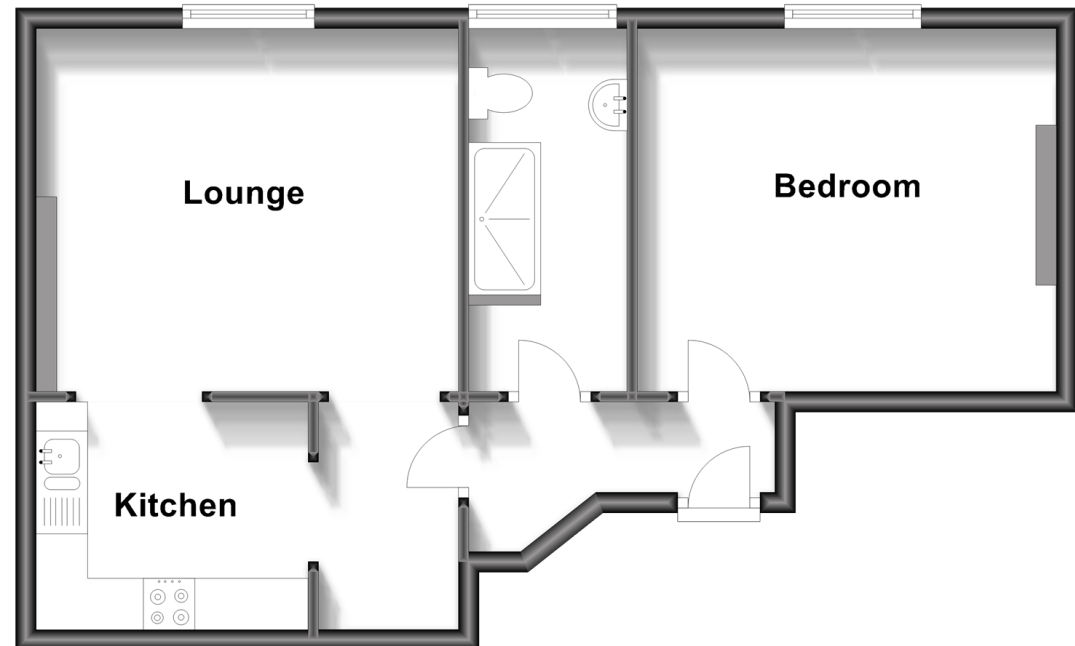
## Accommodation

### FIRST FLOOR

Entrance Hall  
Bedroom  
Bathroom  
Lounge  
Kitchen

## First Floor

Approx. 48.1 sq. metres (517.8 sq. feet)



**Call Ryde - 01983 564646 ■ pittis.co.uk**

- Legal advice should be taken to verify fixtures/fittings, planning, alterations and/or lease details
- Through a Homewise Home For Life Plan people aged 60+ can secure this property for up to 50% less, by purchasing a Lifetime Lease

- Appliances & services are untested, dimensions are approximate and floor plans are not to scale



60426072/20251208/JH/AG