



Lady Margaret Road, Southall

Offers in Region of £300,000

SAB
ESTATES



© SAB Estates

Lady Margaret Road

Southall

- Chain Free
- Recently Refurbished
- Leasehold: 84 Years Remaining
- Second Floor in Low Rise Block
- Rental Income - £1,850
- Private Balcony
- Ground Rent: £10 pa / Service Charge: £145 pcm
- Close to Local Amenities
- Free Parking
- Great Transport Links

Council Tax band: C

Tenure: Leasehold

EPC Energy Efficiency Rating: D

EPC Environmental Impact Rating: E

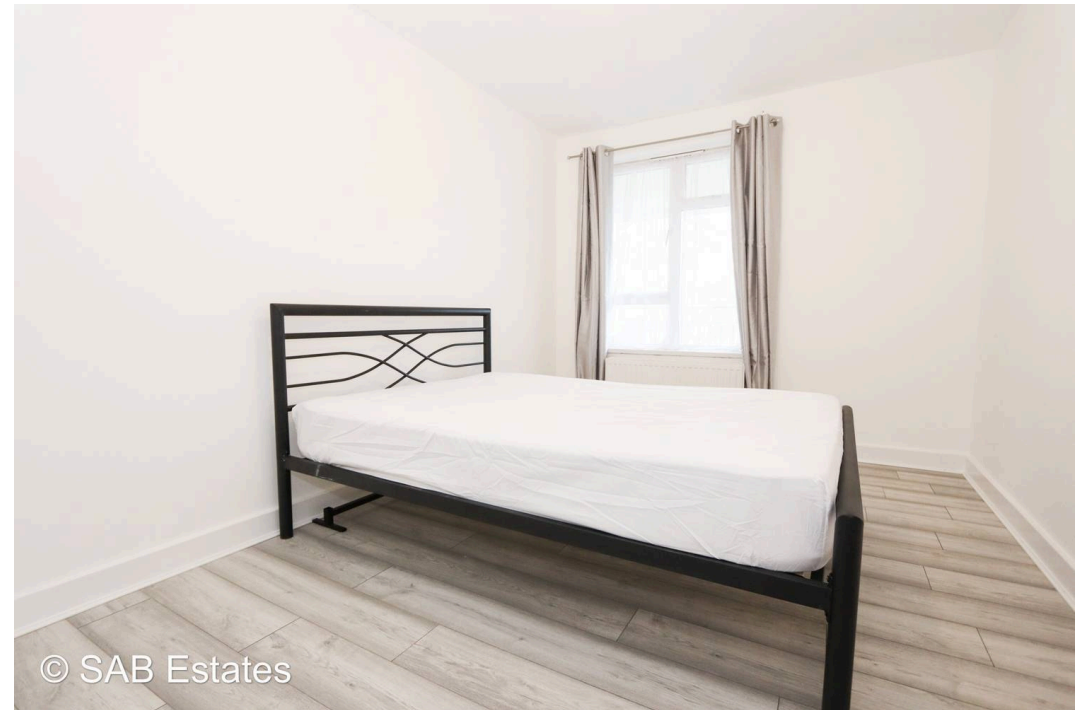
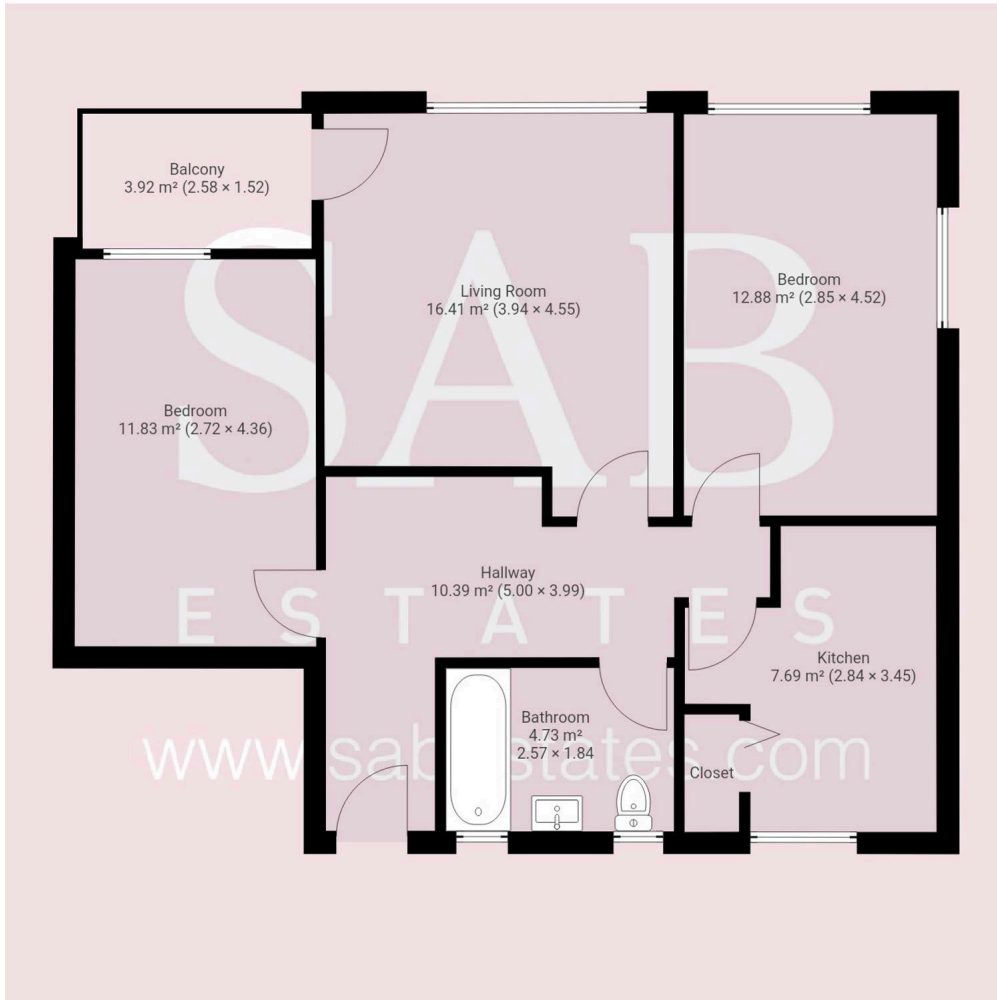


B Estates



B Estates







SAB Estates

236-238 Ruislip Road, Greenford - UB6 9RS

020 8575 2929 • info@sabestates.com • www.sabestates.com/