



Hadrian Street, Greenwich, London SE10 9AQ



## Hadrian Street, Greenwich SE10 9AQ

### Freehold

A beautifully presented Victorian terrace in sought-after Greenwich, blending period charm with contemporary comfort. This home features a versatile garden studio perfect for remote working, while the private garden offers a tranquil outdoor retreat.

### Key Features

- 2 Double bedrooms
- 1 Bathroom + Separate WC
- Private rear garden with studio
- Council Tax: **D**
- On street parking (permit)
- Close to transport links
- Beautifully presented
- EPC: **D**

---

The welcoming ground floor provides well-proportioned living spaces that flow effortlessly from front to back, allowing natural light to permeate throughout. There is also a downstairs contemporary bathroom. The property creates a contemporary feel while respecting its Victorian heritage, resulting in a home that feels both characterful and practical for modern living.

Upstairs, two generous double bedrooms offer comfortable retreats, complemented by a well-appointed separate WC. The thoughtful layout maximizes space efficiency while maintaining the comfortable dimensions expected of a Victorian property.

The private rear garden is a particular highlight, offering a peaceful outdoor sanctuary in this urban setting. At the end of the garden sits a versatile studio space, ideal for a home office – perfect for those embracing hybrid working arrangements or seeking dedicated space for creative pursuits.

Greenwich remains one of London's most captivating neighborhoods, blending rich maritime history with contemporary amenities. The property benefits from proximity to the expansive Greenwich Park, with its Royal Observatory and breathtaking London views.



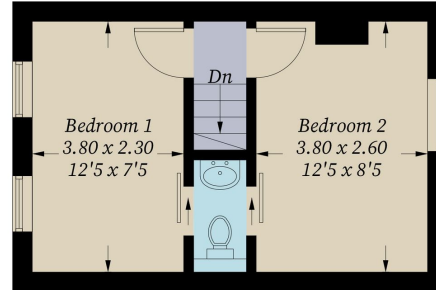




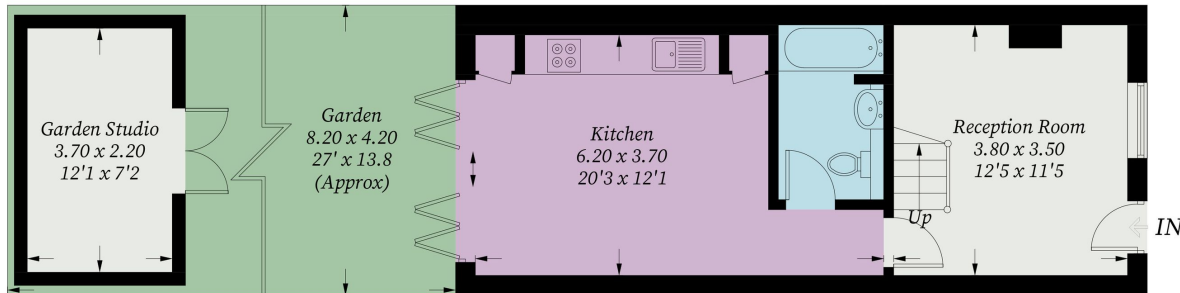


## Hadrian Street, SE10

Approximate Gross Internal Area = 68.1 sq m / 733 sq ft  
(Including Garden Studio)



**First Floor**



**Ground Floor**

Illustration for identification purposes only, measurements are approximate,  
not to scale. Fourlabs.co © (ID1228724)

22 College Approach, Greenwich,  
London, SE10 9HY  
Tel: 020 7399 5595

**Sales, Lettings & Property Management**

[residential.jll.co.uk](http://residential.jll.co.uk)

