



Woburn Place, WC1H £300,000

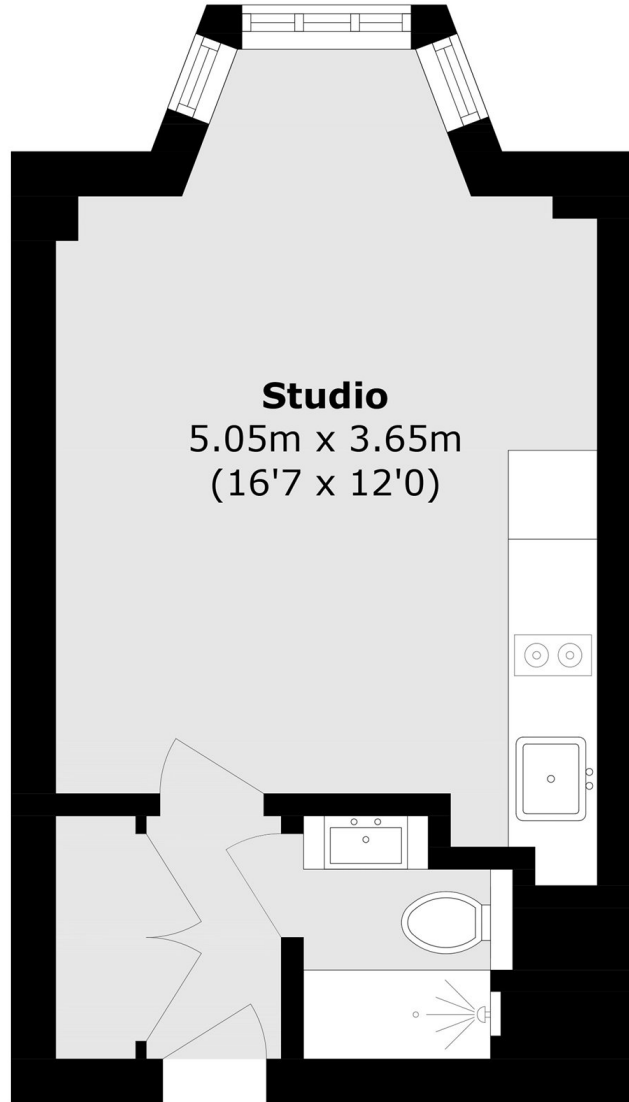
A beautifully refurbished studio apartment located within a well maintained 1930's mansion block. There is a fully re-fitted integrated kitchen which includes a washing machine, a fully tiled re-fitted shower room and built in storage.

Russell Court is a purpose built mansion building moments from Russell Square & The Brunswick shopping centre which contains many well known high street shops and restaurants. The building has undergone major refurbishment including a new roof, redecoration and flooring.

Features

- Excellent Condition
- 24 Hr Concierge
- Lift Access
- Share Of Freehold
- Studio Apartment
- No Onward Chain

Woburn Place, London, WC1H



Total area (approx.): 22.2 sq. m (238.9 sq. ft)

Dexters

Bloomsbury
55-56 Coram Street
London
WC1N 1HB
Sales
020 7833 4466

Energy Rating: C. We aim to make our particulars both accurate and reliable. However they are not guaranteed; nor do they form part of an offer or contract. If you require clarification on any points then please contact us, especially if you're traveling some distance to view. Please note that appliances and heating systems have not been tested and therefore no warranties can be given as to their good working order.

 **RICS** | Regulated
Estate Agent
and Letting Agent

[dexters.co.uk](https://www.dexters.co.uk)