



Drayton Gardens, W13

£1,199,999

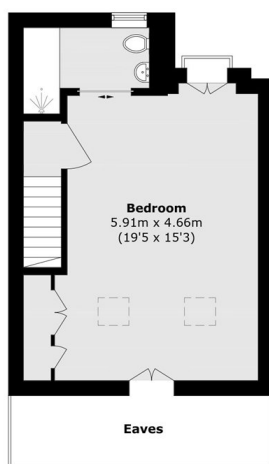
Renovated and finished to the highest of standards by the current occupier is this four bedroom, two reception and two bathroom Edwardian mid terrace family home. An open plan kitchen/dining room opens onto the landscaped rear garden with outdoor kitchen, along with a cosy front reception on the ground floor.

Located in the popular Dayton's residential area with West Ealing station just a couple of minutes walk, linking Bond Street in fourteen minutes, thirteen to Heathrow Airport and approximately thirty to Canary Wharf. There are excellent local schools, state and private.

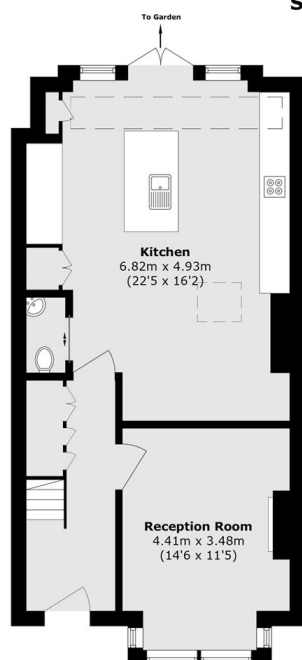
Features

- Four Bedrooms
- Two Reception Rooms
- Open Plan Kitchen/Diner
- Air Conditioning
- Close To Station
- Fully Renovated

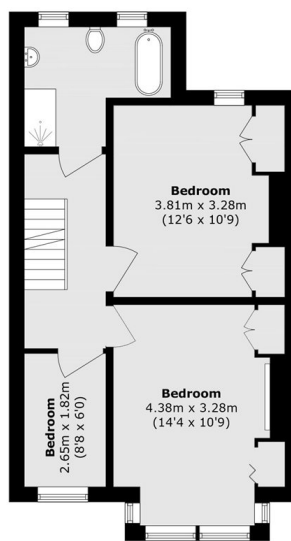
Drayton Gardens, London, W13



Second Floor



Ground Floor



First Floor

Total area (approx.): 131.9 sq. m (1419.7 sq. ft)
(Excluding Eaves)