



46 Mandalay Court London Road, Patcham

£300,000 | £1,750 pcm Leasehold

Two bedroom ground floor flat • Spacious living area • Modern kitchen with integrated appliances • Built-in wardrobes • Modern bathroom with gold fixtures • Bath with overhead shower • Ample natural light throughout • Allocated parking • Well-maintained communal garden • Chain free

HW

ESTATE AGENTS

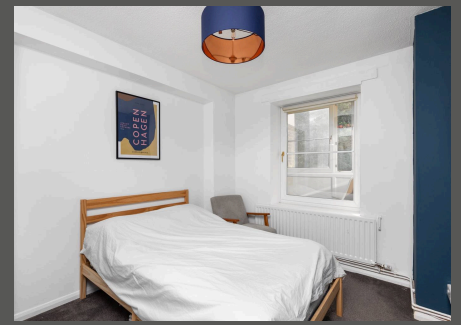
Spacious two-bedroom apartment with balcony, modern kitchen, built-in storage, communal gardens, residents' parking, and good access to amenities and transport links. 765 sq ft.

Council Tax band: C

Tenure: Leasehold

EPC Energy Efficiency Rating: C

EPC Environmental Impact Rating: C



- Two bedroom ground floor flat
- Spacious living area
- Modern kitchen with integrated appliances
- Built-in wardrobes
- Modern bathroom with gold fixtures
- Bath with overhead shower
- Ample natural light throughout
- Allocated parking
- Well-maintained communal garden
- Chain free

