

An aerial photograph of a traditional English cottage with a thick thatched roof and a brick chimney. The cottage has light-colored walls and several white-framed windows. It is situated in a lush green field with trees and a clear blue sky in the background.

DAVID
BURR

Moat Farm Cottage

Thorpe Morieux



Moat Farm Cottage
Thorpe Morieux, IP30 0NR

Occupying a wonderful position on the edge of the sought-after village of Thorpe Morieux, this enchanting Grade II listed thatched cottage enjoys far-reaching views across open Suffolk countryside whilst remaining conveniently placed for Bury St Edmunds and the surrounding villages.

This charming period home, with its traditional long straw thatched roof, colour-washed elevations and attractive dormer windows, perfectly embodies the character and appeal of rural Suffolk living. Set behind a traditional picket fence and surrounded by open farmland, the property offers a rare opportunity to acquire an idyllic country cottage in an exceptional setting.



Key Features

Beautiful Grade II listed thatched cottage

Three bedrooms

Principal bedroom with en suite

Delightful garden

Convenient for Bury St Edmunds



Living & Entertaining

Internally, the cottage offers well-balanced living space including a generous sitting room ideal for entertaining and everyday family life, together with a separate dining room and fitted kitchen.

The property retains a wealth of original charm throughout, with character features that enhance its warm and welcoming atmosphere.

Outside, the gardens complement the cottage beautifully and enjoy a peaceful rural backdrop with far-reaching countryside views.



Bedrooms & Bathrooms

The ground floor principal bedroom benefits from an en suite shower room, while two further bedrooms and a family bathroom are located on the first floor.



Floorplan

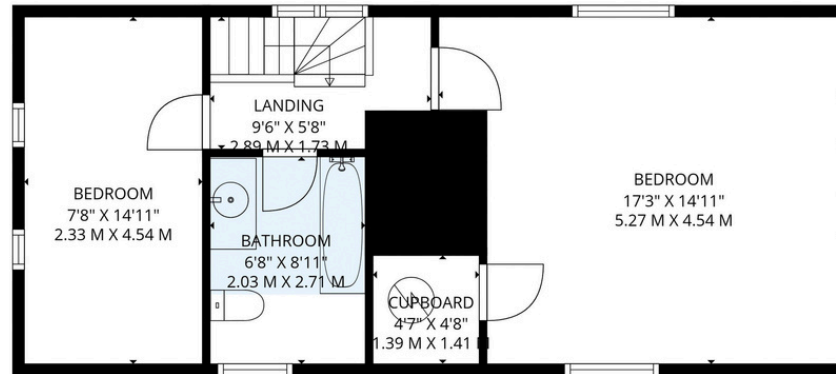
Property information

Mid Suffolk District Council - E

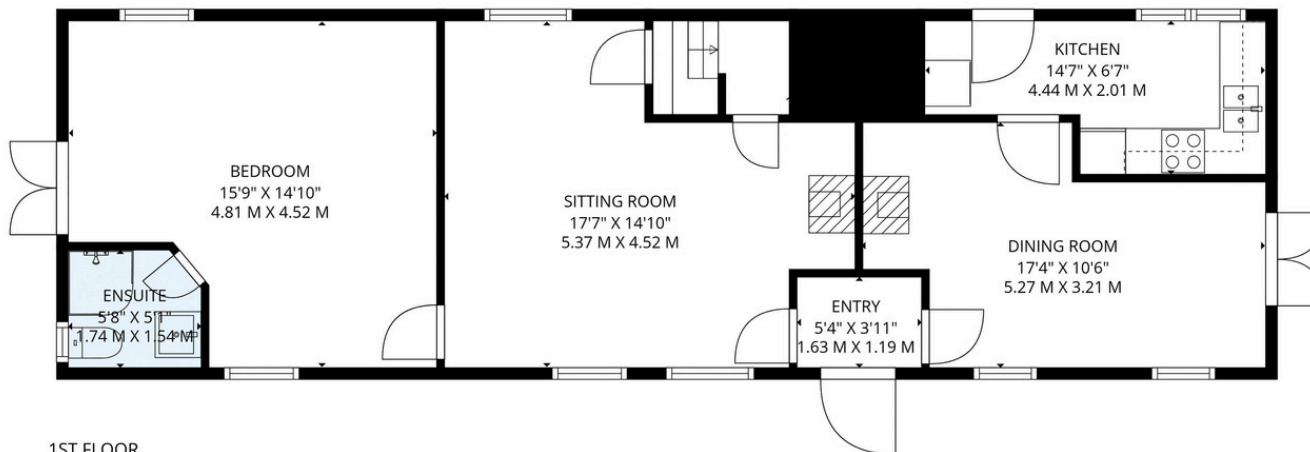
EPC Rating: TBC

TENURE: A holding deposit of one week's rent will be required to process an application for a Tenancy. One month's rent and 5 weeks security deposit will be payable prior to handover. Fees may be charged for late payment of rent and mislaid keys.

NOTICE: Whilst every effort has been made to ensure the accuracy of these sales details, they are for guidance purposes only and prospective purchasers or lessees are advised to seek their own professional advice as well as to satisfy themselves by inspection or otherwise as to their correctness. No representation or warranty whatever is made in relation to this property by David Burr or its employees nor do such sales details form part of any offer or contract.



2ND FLOOR



1ST FLOOR

All Measurements Are Approximate, This Floor Plan is a Guide Only. Produced By Dcpp.



David Burr - Woolpit
Sampson House, Woolpit,
Bury IP30 9QN

01359 245 245

Woolpit@davidburr.co.uk