

WILKINSON

SALES • LETTINGS • MANAGEMENT

£175,000

Perry Hill, Tewkesbury, GL20



2

Bedrooms



1

Bathroom

101 High Street, Tewkesbury, Gloucestershire, GL20 5JZ |
Info@wilkinsonslm.co.uk

01684 367736



- Terraced House
- Lounge with French Doors to Rear Garden
- Kitchen/Dining Room
- Two Double Bedrooms
- Bathroom & Separate WC
- Southerly Facing Rear Garden
- Outbuilding with Electric
- Permit Parking at NO COST
- UPVC Double Glazing
- Gas Central Heating

Wilkinson SLM are delighted to bring to market, a family loved, two bedroom terraced house in Priors Park, Tewkesbury. Within a short walking distance to Tewkesbury High Street and school catchment area, this is not one to miss.

Upon arrival, the front door opens to a light and airy hallway with a door to the left accessing the lounge with the added benefit of an understairs storage cupboard and French doors welcoming the rear garden. A further door from the hallway opens to the kitchen/dining room with an array of base and wall units, a free standing gas cooker and a patio door to the rear garden.

The SOUTHERLY FACING rear garden has a patio area with the remainder laid to lawn. A patio area to the back offers space for a hot tub, just like the current owners use the space for! There is also the advantage of an outbuilding with power and provides a useful storage space.

This deceptively spacious home further benefits from UPVC double glazing, gas central heating and permit parking that comes at No Cost to you! A viewing comes highly recommended!

Service Charge - £210pa

Lease Length - 80 Years Remaining

Lounge 17' 6" x 9' 0" (5.33m x 2.74m)
maximum measurements

Kitchen/Dining Room 11' 1" x 13' 1" (3.38m x 3.99m)
maximum measurements

Bedroom One 11' 4" x 12' 5" (3.45m x 3.78m)
maximum measurements

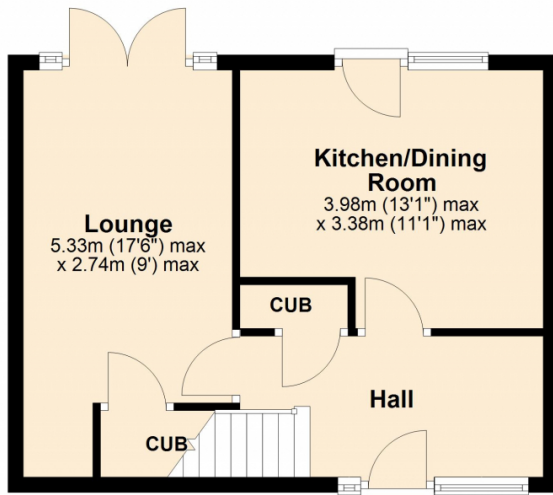
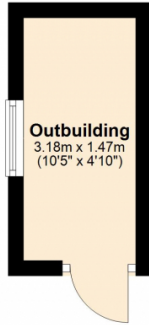
Bedroom Two 11' 4" x 9' 9" (3.45m x 2.97m)

Bathroom 5' 11" x 4' 11" (1.80m x 1.50m)

Outbuilding 10' 5" x 4' 10" (3.17m x 1.47m)

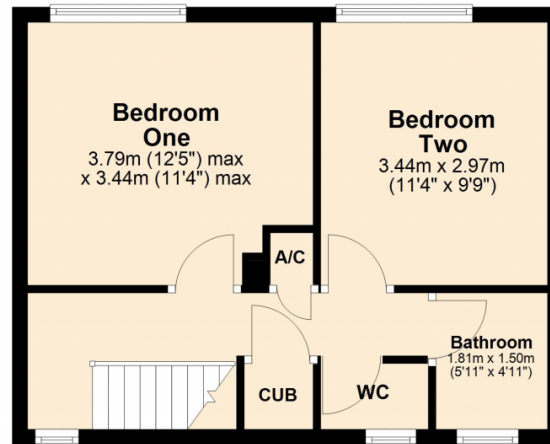
Ground Floor

Approx. 41.0 sq. metres (441.6 sq. feet)



First Floor

Approx. 36.6 sq. metres (394.3 sq. feet)



Total area: approx. 77.7 sq. metres (835.8 sq. feet)

Energy Efficiency Rating

	Current	Potential
Very energy efficient - lower running costs		
(92+) A		
(81-91) B		
(69-80) C	71	79
(55-68) D		
(39-54) E		
(21-38) F		
(1-20) G		
Not energy efficient - higher running costs		
England, Scotland & Wales		EU Directive 2002/91/EC

Address: Perry Hill, Tewkesbury, GL20

