



House - Terraced (EPC Rating: )

LIVERPOOL ROAD, WATFORD, WD18

0DN

Per Month

£1,850 Per



# 3 Bedroom House - Terraced located in Watford

This well-presented three-bedroom family home is ideally located on the sought-after Liverpool Road in central Watford, offering a perfect blend of space, convenience, and excellent local amenities.

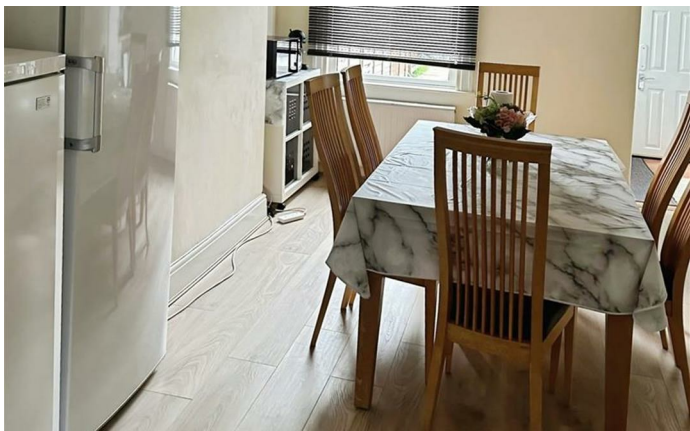
The property boasts a bright and spacious through lounge diner, providing an ideal setting for both relaxing and entertaining. A well-appointed kitchen and a convenient downstairs bathroom add to the practicality of the home, making it especially suitable for modern family living.

Upstairs, the property comprises three generously sized bedrooms, offering ample space for families or those needing a home office. Additional benefits include a private garage and permit parking, ensuring hassle-free parking in this prime central location.

Perfectly positioned just moments from Watford Hospital, this home is ideal for healthcare professionals and families alike. The property also falls within close proximity to highly regarded grammar schools, making it an excellent choice for those prioritising education.

With local shops, transport links, and amenities all within easy reach, this property offers both comfort and convenience in one of Watford's most desirable areas.

Available from April 2026 – early viewing is highly recommended.



WATFORD LETTINGS | 12 MARKET STREET, WATFORD, HERTFORDSHIRE, WD18 0PD

Council Tax Band

Energy Performance Graph

Energy Efficiency Rating		
	Current	Potential
<i>Very energy efficient - lower running costs</i>		
(92 plus) <b>A</b>		
(81-91) <b>B</b>		
(69-80) <b>C</b>		
(55-68) <b>D</b>		
(39-54) <b>E</b>		
(21-38) <b>F</b>		
(1-20) <b>G</b>		
<i>Not energy efficient - higher running costs</i>		
<b>England &amp; Wales</b>	EU Directive 2002/91/EC	

Call us on

**01923 220 012**

**[enquiries@warrenanthony.co.uk](mailto:enquiries@warrenanthony.co.uk)**

**[www.warrenanthony.co.uk](http://www.warrenanthony.co.uk)**

Agents Note: Whilst every care has been taken to prepare these particulars, they are for guidance purposes only. All measurements are approximate and are for general guidance purposes only and whilst every care has been taken to ensure their accuracy, they should not be relied upon and potential buyers are advised to recheck the