

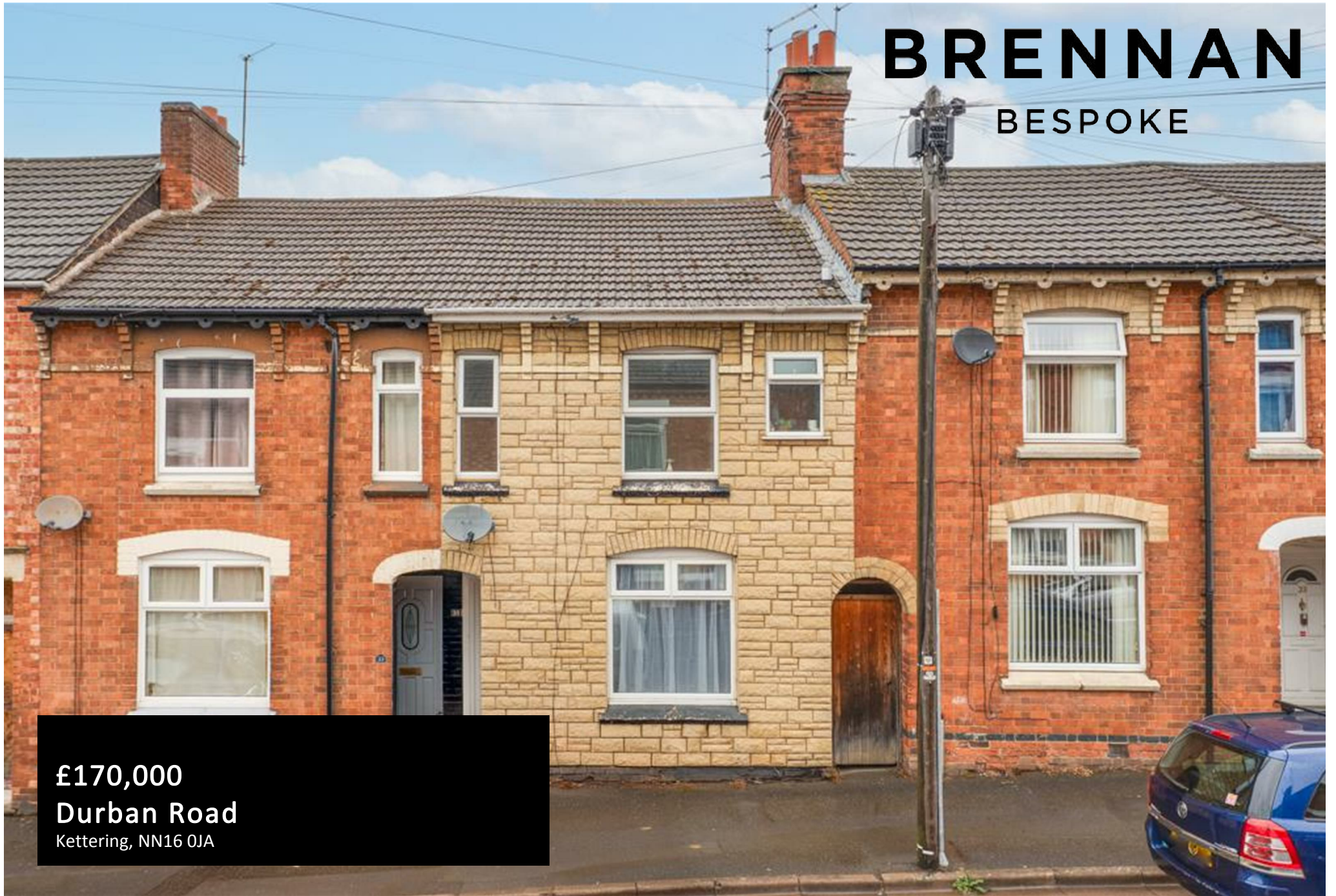
BRENNAN

BESPOKE

£170,000

Durban Road

Kettering, NN16 0JA



PROPERTY SUMMARY

Set in a central Kettering location close to the town centre, this two-bedroom home offers a practical layout that suits first-time buyers, downsizers or investors, with the benefit of a rear garden and on-street parking. The ground floor includes a spacious living/dining room that provides a versatile main reception space for relaxing and entertaining, along with a separate kitchen to the rear, while useful storage helps keep the space organised. Upstairs, there are two bedrooms and a family bathroom, creating straightforward accommodation that is easy to maintain and offers scope to personalise over time. Externally, the rear garden is mainly laid to lawn, providing a pleasant outdoor space for relaxing, gardening or summer seating, while the central position keeps you within easy reach of local shops, amenities and transport links.

2



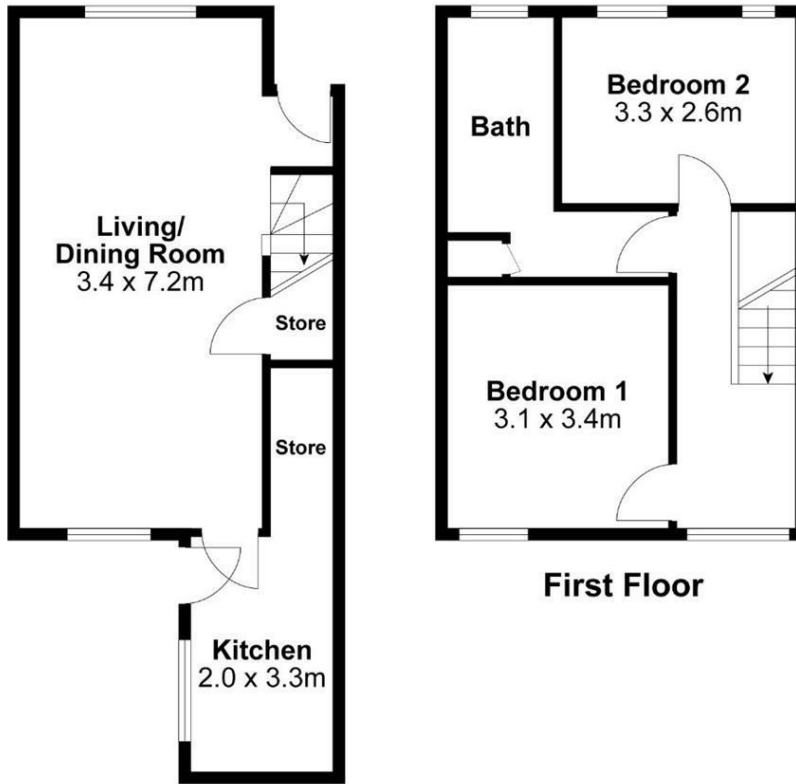
1



1







Ground Floor

First Floor

For identification only not to scale

Internal Area Approx. : 72m²

BRENNAN
BESPOKE

LOCAL AUTHORITY

TENURE
Freehold

COUNCIL TAX BAND

VIEWINGS
By prior appointment only

Energy Efficiency Rating		Current	Potential
<i>Very energy efficient - lower running costs</i>			
(92 plus) A			86
(81-91) B			
(69-80) C			
(55-68) D		63	
(39-54) E			
(21-38) F			
(1-20) G			
<i>Not energy efficient - higher running costs</i>			
England & Wales		EU Directive 2002/91/EC	

Agents Note: Whilst every care has been taken to prepare these particulars, they are for guidance purposes only. All measurements are approximate and are for general guidance purposes only and whilst every care has been taken to ensure their accuracy, they should not be relied upon and potential buyers/tenants are advised to recheck the measurements

BRENNAN
BESPOKE

OFFICE ADDRESS
BRENNAN BESPOKE
2 The Tithe Barn Glendon Lodge Farm
Glendon
Kettering
Northamptonshire
NN14 1QF

OFFICE DETAILS
01536 904400
info@brennanbespoke.co.uk
<https://www.brennanbespoke.co.uk>