



📍 Somerley The Green, Dauntsey, Wiltshire, SN15 4HY

🏠 Guide Price £495,000

Located in a delightful semi rural setting a beautifully presented four bedroom detached family home.

- Attractive Village Home
- Beautifully Presented Throughout
- Four Bedrooms
- Family Bathroom + En Suite
- Kitchen/Breakfast + Utility
- Delightful Conservatory
- Established Gardens
- Garage + Ample Parking

🏡 Freehold

📊 EPC Rating E



An attractive four bedroom detached family home set in a delightful semi rural location amid delightful gardens, in the heart of this desirable village. The property has been carefully designed to provide balanced accommodation, which is beautifully presented throughout. The ground floor comprises an entrance hallway with cloakroom, a bright and spacious sitting/dining room with feature fireplace and a recently refitted kitchen/breakfast room with a range of integrated appliances and a separate utility room. A door from the kitchen open into a spacious conservatory with delightful views over the rear garden. The first floor boasts a master bedroom with an en suite shower room, three further bedrooms and a family bathroom.

SITUATION

The small village of Dauntsey is located just north of the M4 motorway, some five miles from Malmesbury. It has its own primary school and a wonderful farm shop providing a huge range of both essential and speciality grocery items sourced from the local area and from further afield. There are ample opportunities for walking and riding in the surrounding countryside. The towns of Malmesbury, Chippenham and Royal Wootton Bassett provide comprehensive facilities and services, whilst the nearby village of Great Somerford has a late opening store incorporating a Post Office. The property is conveniently located for access to the M4 motorway, and also for the major commercial centres of Swindon, Bristol and Bath. Mainline railway services are available from Chippenham and Swindon connecting with London Paddington in approximately 1 hour.

PROPERTY INFORMATION

Title: Freehold

Council Tax Band; E

EPC Rating; E

Mains electricity, water, drainage and oil fired central Heating



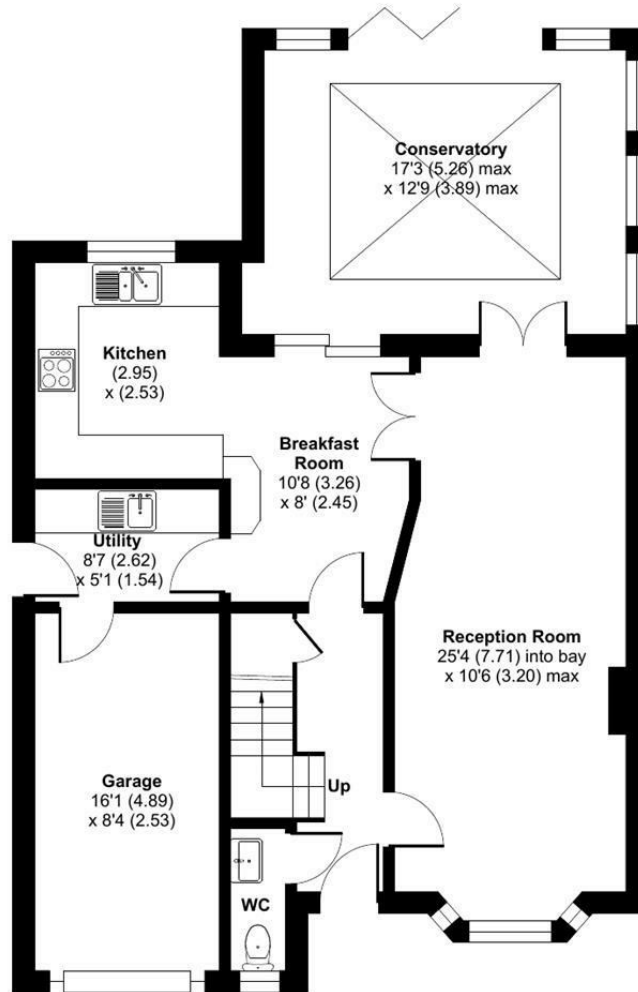
The Green, Dauntsey, Chippenham, SN15

Approximate Area = 1442 sq ft / 133.9 sq m

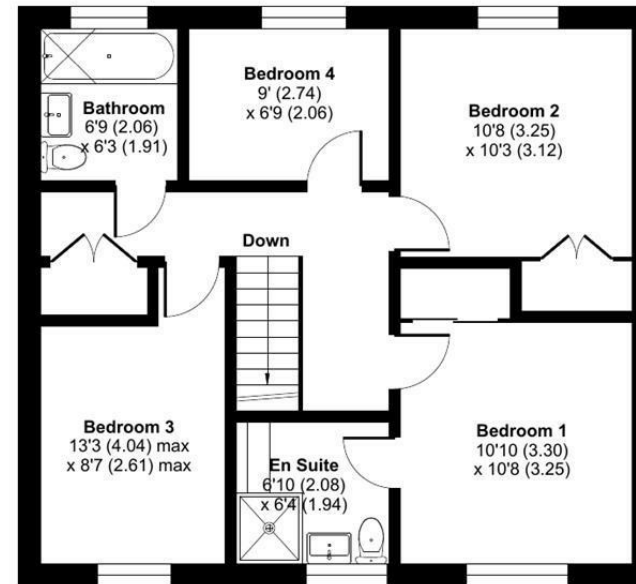
Garage = 133 sq ft / 12.3 sq m

Total = 1575 sq ft / 146.2 sq m

For identification only - Not to scale



GROUND FLOOR



FIRST FLOOR

 Floor plan produced in accordance with RICS Property Measurement 2nd Edition, Incorporating International Property Measurement Standards (IPMS2 Residential). © ntechcom 2026. Produced for Strakers. REF: 1400316

Disclaimer These particulars, whilst believed to be accurate are set out as a general outline only for guidance and do not constitute any part of an offer or contract. Intending purchasers should not rely on them as statements of representation of fact, but must satisfy themselves by inspection or otherwise as to their accuracy. No person in this firm's employment has the authority to make or give any representation or warranty in respect of the property. All measurements and distances are approximate only. Your home is at risk if you do not keep up repayments on a mortgage or other loan secured on it.