

Property ref: 55156

## London Street, Reading, RG1 4PS

£1,150 PCM

**HASLAM'S**  
Lettings



A converted one bedroom first floor apartment within walking distance of the town centre, the Oracle and Reading mainline station. Reading Borough Council Tax Band B. Broadband/Mobile Info: Connections available. For an indication of specific speeds and supply of Broadband and Mobile, we advise applicants go to the Ofcom website 'Broadband and Mobile Coverage Checker'.

**Available 27/07/2026**

- Double bedroom with a built-in wardrobe
- Fitted kitchen with appliances; No pets allowed
- Located in the Market Place/London Street Conservation Area
- Electric heating; EPC rating D
- Furnished; No parking
- Shower room; Managed by HASLAM'S

\*Fees For Assured Periodic Tenancies: when you rent a property from us you will be required to pay a sum equivalent to one weeks' rent for a holding deposit. Upon successful application, this amount will be off set against your first months' rent. You will also be required to pay a security deposit equivalent to 5 weeks' rent which will be held and protected in line with Deposit legislation. For more information about our fees please visit: [www.haslams.net](http://www.haslams.net)  
Fees for all other tenancies (Non Housing Act Tenancies / Company Lets): when you rent a property from us we will charge you a one-off fee per property. This charge is the equivalent of 15 days of the monthly rental charge (+VAT) with a minimum fee of £450 (inc.VAT) up to a maximum of £650 (inc.VAT). Other fees may apply depending on your circumstances.

**0118 960 1055**

**[lettings@haslams.net](mailto:lettings@haslams.net) [www.haslams.net](http://www.haslams.net)**

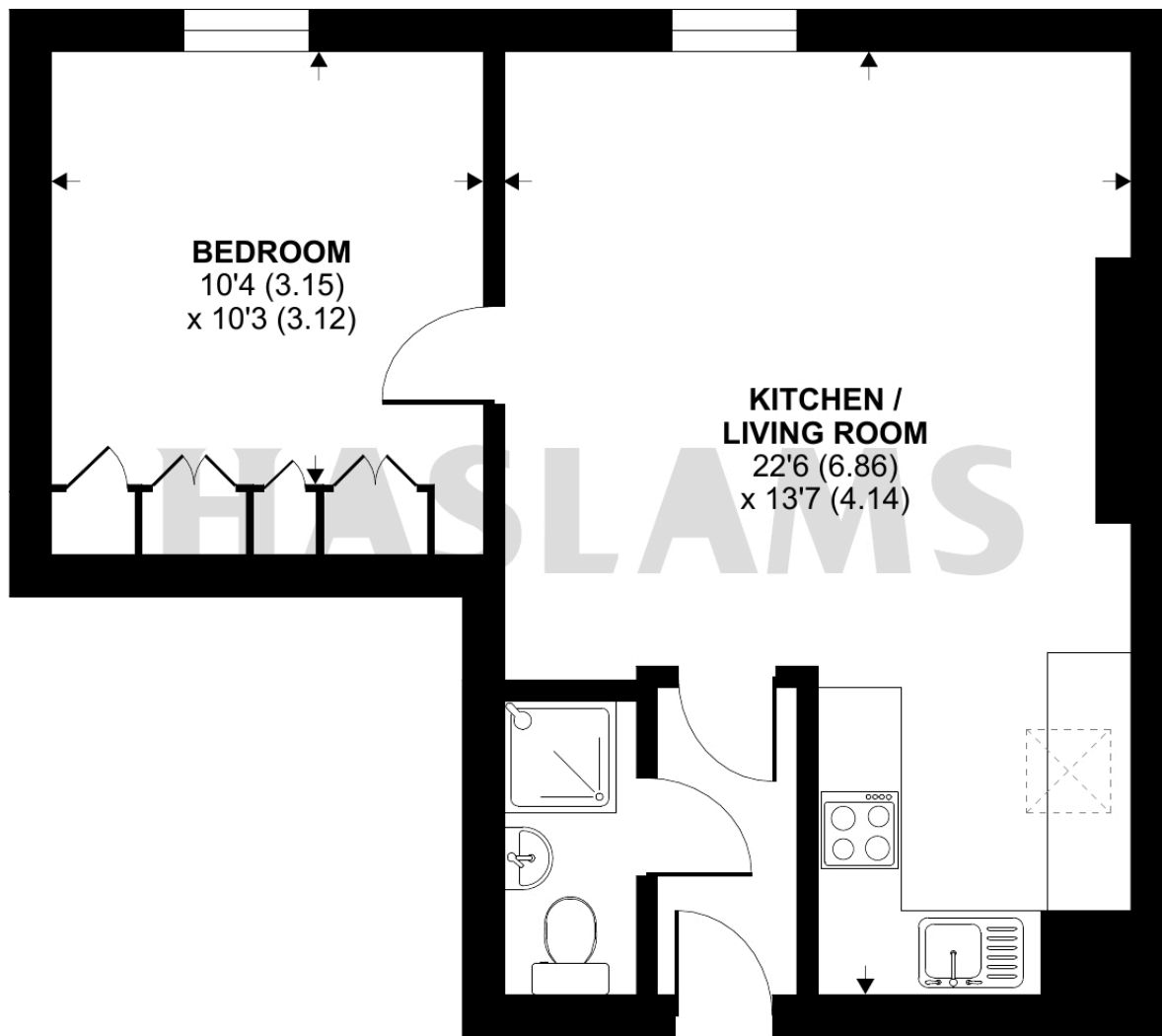
**Haslams Estate Agents Ltd, 159 Friar Street, Reading, Berkshire, RG1 1HE**



# London Street, Reading, RG1

Approximate Area = 467 sq ft / 43.3 sq m

For identification only - Not to scale



**SECOND FLOOR**



Floor plan produced in accordance with RICS Property Measurement Standards incorporating International Property Measurement Standards (IPMS2 Residential). © n1cheom 2024. Produced for Haslams. REF: 1184525