



Guide Price

£500,000

Leasehold

2x  2x  1x 

**Buchanan House,
Troubridge Square,
Walthamstow, Waltham
Forest, E17**



Main features

- Stunning modern 2nd floor apartment
- Presented in fantastic decorative order
- Two bathrooms and modern kitchen
- Private side balcony
- Allocated parking space
- Ideally located just off Wood Street close to local amenities

Accommodation

SECOND FLOOR

Lounge/Kitchen/Dining Room: 25'4 x 12'11 (7.73m x 3.94m)

Bedroom 1: 17'10 x 15'4 (5.44m x 4.68m)

En Suite

Bedroom 2: 13'1 x 9'9 (3.99m x 2.97m)

Bathroom

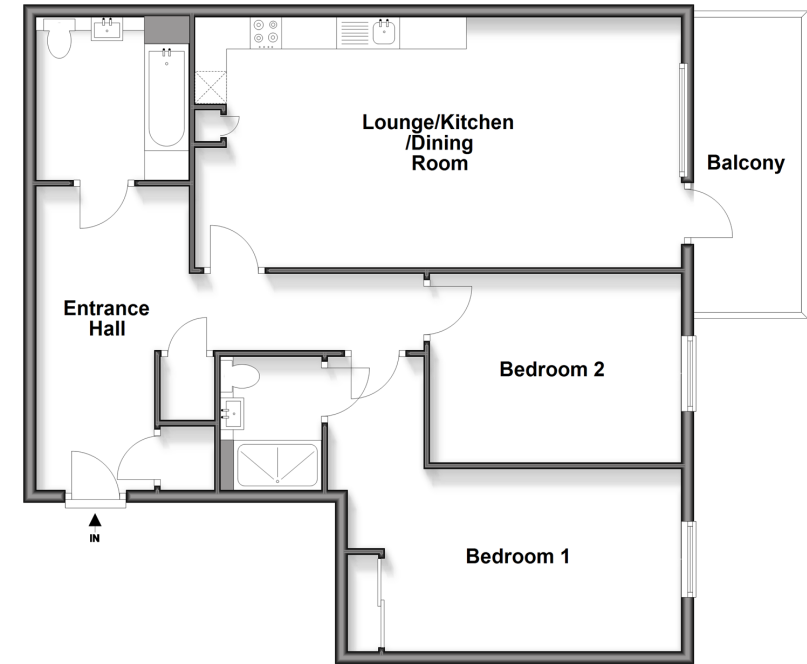
OUTSIDE

Balcony off Lounge

Allocated Parking Space

Second Floor

Approx. 92.5 sq. metres (996.1 sq. feet)



Call Walthamstow - 020 8509 0092 ■ douglasallen.co.uk

- A private rental licensing scheme applies to some properties in this area, please check with the Local Authority before proceeding
- Legal advice should be taken to verify fixtures/fittings, planning, alterations and/or lease details
- Appliances & services are untested, dimensions are approximate and floor plans are not to scale



53118094/20251213/KS/SC