



Guide Price
£425,000

Freehold

3x  1x  2x 

**Magpie Hall Road,
Chatham, Kent, ME4**

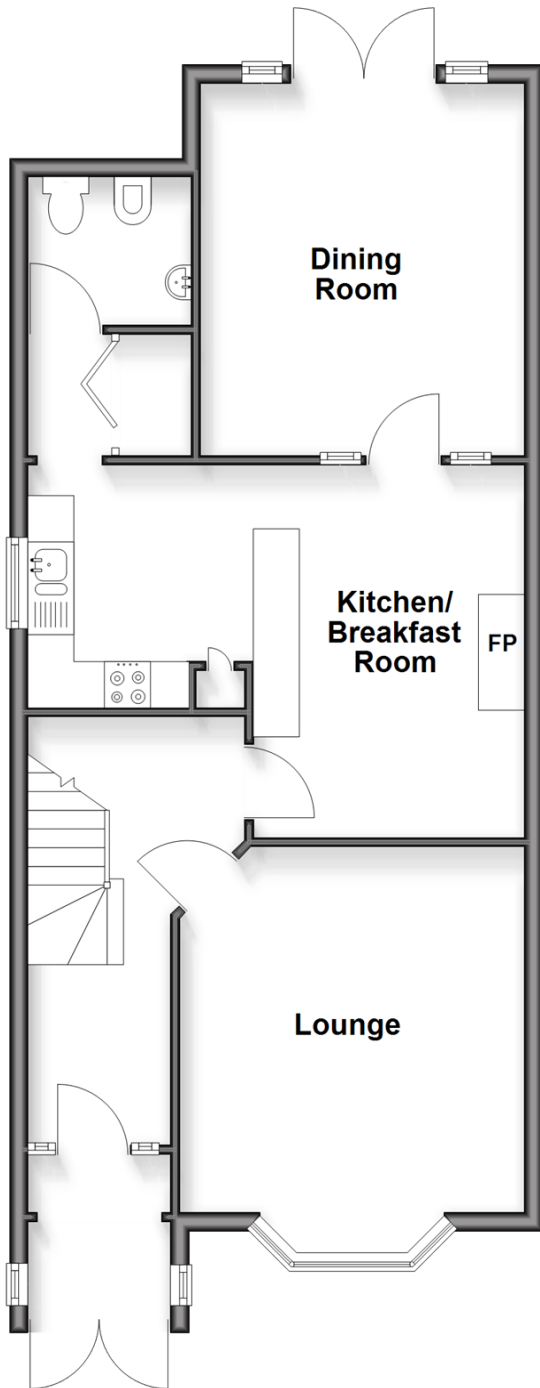
OVER 60?

Secure this property
for up to **59% less!**

Wards
Helping you move forwards

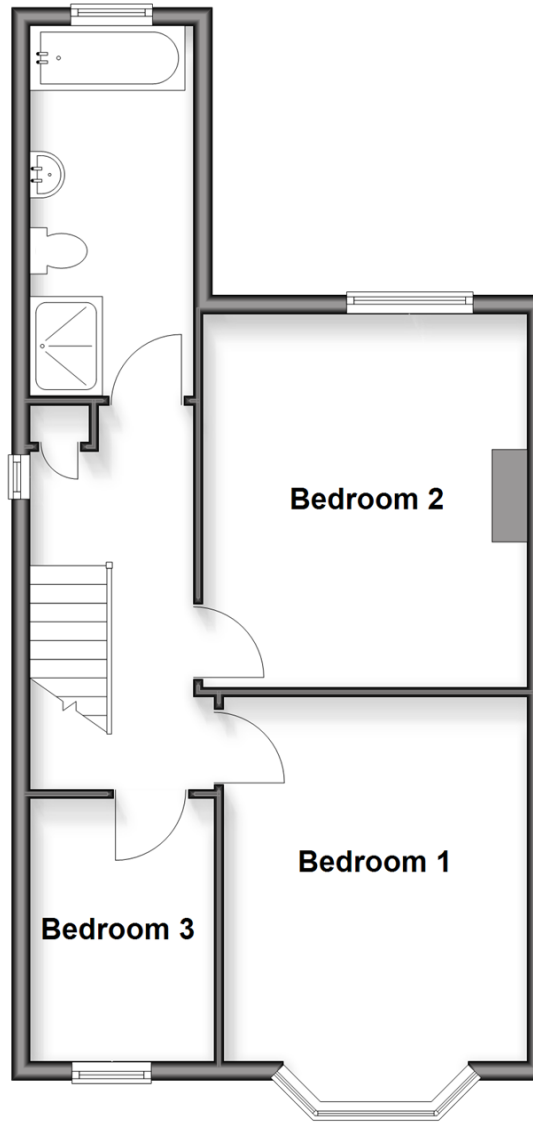
Ground Floor

Approx. 65.8 sq. metres (708.8 sq. feet)



First Floor

Approx. 49.3 sq. metres (531.1 sq. feet)



Accommodation

GROUND FLOOR

Entrance Porch

Hallway

Lounge: 13'1 x 12'2 (3.99m x 3.71m)

Kitchen Area: 9'8 x 8'10 (2.95m x 2.69m)

Breakfast Area: 13'0 x 10'2 (3.97m x 3.10m)

Dining Room: 11'6 x 10'10 (3.51m x 3.30m)

Cloakroom

FIRST FLOOR

Landing

Bedroom 1: 13'3 x 10'9 (4.04m x 3.28m)

Bedroom 2: 12'11 x 10'8 (3.94m x 3.25m)

Bedroom 3: 9'8 x 8'3 (2.95m x 2.52m)

Bathroom

OUTSIDE

Front Garden

Driveway to Front

Rear Garden

Driveway to Rear

Garage to Rear



Main features

- Beautiful Edwardian bay fronted semi-detached house
- Plenty of parking, with additional garage to rear
- Excellent social space with extended dining room extension
- Ideal home for a family looking to upgrade
- Perfect location for popular local schools, opposite green space at Coney Banks



Nearest Schools

Primary Schools: Phoenix Junior Academy 0.9 miles, New Road School and Nursery Unit 0.9 miles, Maundene School 0.9 miles

Secondary Schools: Chatham South School 0.3 miles,



Transport Information

Train Stations: Chatham 1.7 miles, Rochester 2.3 miles, Cuxton 2.8 miles



Address

Magpie Hall Road, Chatham, Kent, ME4



Directions

For directions to this property please contact us.



Wards
Helping you move forwards

Call Chatham Branch 01634 841243 ■ wardsofkent.co.uk



- Legal advice should be taken to verify fixtures/fittings, planning, alterations and/or lease details
- Appliances & services are untested, dimensions are approximate and floor plans are not to scale
- Through a Homewise Home For Life Plan people aged 60+ can secure this property for up to 50% less, by purchasing a Lifetime Lease.



10435873/20251002/BC/BC