






PEMBROKE SQUARE

Kensington W8



A BEAUTIFULLY LIGHT GRADE II LISTED FAMILY HOUSE

Occupying a coveted position on the highly sought-after Pembroke Square, with access to the impeccably maintained communal gardens and residents' tennis court.

			EPC
5	4	4	D

Local Authority: Royal Borough of Kensington and Chelsea

Council Tax band: H

Tenure: Freehold

Guide Price: £3,950,000



EXTENDING TO APPROXIMATELY 2,800 SQ FT

The ground floor comprises a welcoming entrance hall, a formal dining room opening seamlessly into a sleek SieMatic kitchen fitted with Miele appliances, and an additional reception/garden room to the rear. This space enjoys direct access to a charming private patio, ideal for outdoor entertaining. The first-floor south-facing double reception room offers impressive proportions and natural light, providing an exceptional setting for both formal and relaxed living. The upper floors accommodate a generous principal bedroom suite with excellent built-in storage and en suite bathroom, two further double bedrooms, and a well-appointed family bathroom. An additional attic room offers versatility as a dressing room or study. The lower ground floor provides highly flexible accommodation, currently arranged as a double bedroom with double doors opening onto a further reception/study area, alongside a self-contained bedroom with en suite shower room, a dedicated laundry room, and extensive storage.





Lower Ground Floor
834 ft²



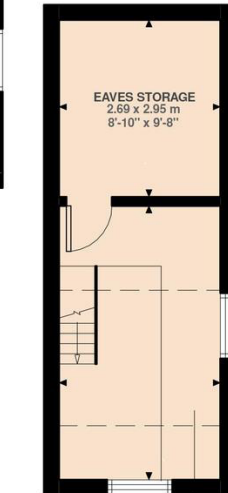
Ground Floor
659 ft²



First Floor
579 ft²



Second Floor
579 ft²



Third Floor
135 ft²

Pembroke Square, W8
 Approximate Gross Internal Area
258.80 SQ.M / 2786 SQ.FT
 (EXCLUDING EAVES STORAGE & VAULT)
 EAVES STORAGE & VAULT 19.42 SQ.M / 209 SQ.FT
 INCLUSIVE TOTAL AREA 278.22 SQ.M / 2995 SQ.FT



Illustration for identification purposes only. Not to scale.
 Floor Plan Drawn According To RICS Guidelines.

Approximate Gross Internal Area = 58.80 sq m / 2786 sq ft

This plan is for layout guidance only. Not drawn to scale unless stated. Windows and door openings are approximate. Whilst every care is taken in the preparation of this plan, please check all dimensions, shapes and compass bearings before making any decisions reliant upon them. (ID767266)

We would be delighted
to tell you more.

Jordanna Mancina

+44 20 3892 3573

jordanna.mancina@knightfrank.com

Knight Frank Kensington

52-56 Kensington Church Street

London W8 4DB

[knightfrank.co.uk](https://www.knightfrank.co.uk)

Your partners in property

1. Particulars: These particulars are not an offer or contract, nor part of one. You should not rely on statements given by Knight Frank in the particulars, by word of mouth or in writing ("information") as being factually accurate about the property, its condition or its value. Neither Knight Frank nor any joint agent has any authority to make any representations about the property, and accordingly any information given is entirely without responsibility on the part of Knight Frank. 2. Material Information: Please note that the material information is provided to Knight Frank by third parties and is provided here as a guide only. While Knight Frank has taken steps to verify this information, we advise you to confirm the details of any such material information prior to any offer being submitted. If we are informed of changes to this information by the seller or another third party, we will use reasonable endeavours to update this as soon as practical. 3. Photos, Videos etc: The photographs, property videos and virtual viewings etc. show only certain parts of the property as they appeared at the time they were taken. Areas, measurements and distances given are approximate only. 4. Regulations etc: Any reference to alterations to, or use of, any part of the property does not mean that any necessary planning, building regulations or other consent has been obtained. A buyer must find out by inspection or in other ways that these matters have been properly dealt with and that all information is correct. 5. Fixtures and fittings: A list of the fitted carpets, curtains, light fittings and other items fixed to the property which are included in the sale (or may be available by separate negotiation) will be provided by the Seller's Solicitors. 6. VAT: The VAT position relating to the property may change without notice. 7. To find out how we process Personal Data, please refer to our Group Privacy Statement and other notices at <https://www.knightfrank.com/legals/privacy-statement>.

Particulars dated April 2026. Photographs and videos dated April 2026. All information is correct at the time of going to print. Knight Frank is the trading name of Knight Frank LLP. Knight Frank LLP is a limited liability partnership registered in England and Wales with registered number OC305934. Our registered office is at 55 Baker Street, London W1U 8AN. We use the term 'partner' to refer to a member of Knight Frank LLP, or an employee or consultant. A list of members names of Knight Frank LLP may be inspected at our registered office. If you do not want us to contact you further about our services then please contact us by either calling 020 3544 0692, email to marketing.help@knightfrank.com or post to our UK Residential Marketing Manager at our registered office (above) providing your name and address.