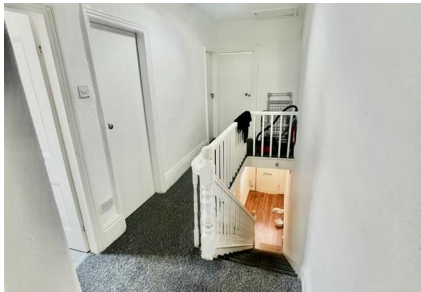


Langdale Road, Manchester, M14 5PP

£575 Per Month

Council Tax Band: B



3 Rooms Available (2 Single, 1 Double) – Victoria Park, M14 5PP

A well-presented 5-bedroom student house in the heart of Victoria Park, one of Manchester's most popular student areas — walking distance to University of Manchester and Manchester Metropolitan University, with easy access to the city centre.

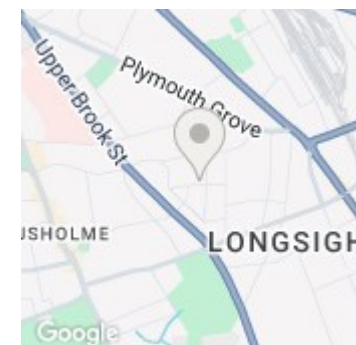
Available now:
2x Single rooms
1x Double room

Property highlights:
Fully furnished throughout
Modern kitchen with integrated appliances
Spacious shared living area
Contemporary bathroom(s)
Superfast broadband
Close to shops, cafes, restaurants and everyday amenities
Excellent transport links into Manchester city centre

Victoria Park is consistently one of the most in-demand student locations in South Manchester — properties here don't hang around. With only 3 rooms left, viewings are booking up fast. Contact us today to arrange a viewing.



Open House South Manchester



Energy Efficiency Rating		
	Current	Potential
Very energy efficient - lower running costs		
(92 plus) A		
(81-91) B		
(69-80) C		
(55-68) D		
(39-54) E		
(21-38) F		
(1-20) G		
Not energy efficient - higher running costs		
England & Wales	EU Directive 2002/91/EC	